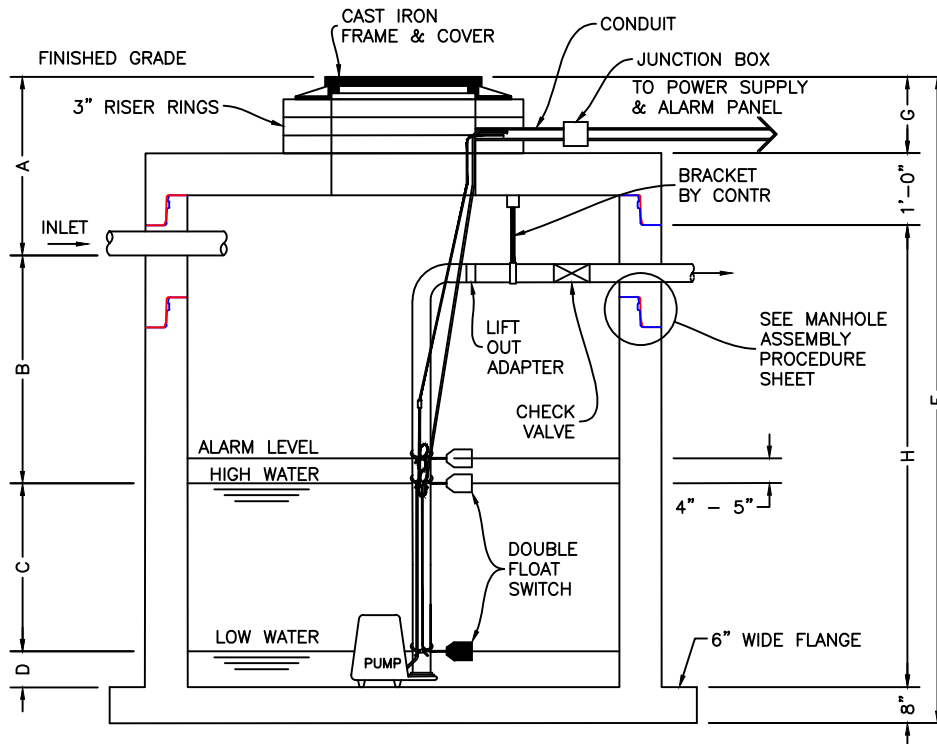




RESIDENTIAL PUMP TANK

A	FINISHED GRADE TO PIPE INVERT	INCHES
B	MINIMUM RESERVE STORAGE CAPACITY OF ONE DAY'S FLOW	GALLONS
C	FIELD DOSE CAPACITY (IF NOT NOTED FIND LINEAL FEET OF PIPE IN LEACH FIELD AND CALCULATE FIELD CAPACITY x 75% TO ACHIEVE ANSWER. THEN DIVIDE GALLONAGE BY GAL./L.F. BASED ON DIAMETER OF STRUCTURE TO GET LIQUID DEPTH)	INCHES
D	PUMP SUBMERGENCE (6" TO 12" TYP.)	INCHES
F	TOTAL (ADD A THROUGH D + 6")	INCHES
G	SUBTRACT FRAME & COVER & ADJUSTMENT (3" INCREMENTS)	INCHES
H	INSIDE HEIGHT OF MANHOLE	INCHES



INCLUDES:

- 1.) DELIVERY AND SETTING INTO EXCAVATION (MAX. 1 HOUR ALLOWED).
- 2.) GASKETS ONLY FOR 4'-0" DIA. (NO LUBE OR BUTYL REQ'D)
- 3.) GASKETS, LUBE AND 1" BUTYL SEALANT (ONE STRIP/JOINT) - 5' & 6' DIA. ONLY.
- 4.) MANHOLE ASSEMBLY PROCEDURE SHEET.
- 5.) 2-PIPE OPENINGS OR WATERTIGHT SEALS WHERE POSSIBLE.

DESCRIPTION	CODE	GAL./L.F.
4' DIA. X 5' DEPTH (H) ADD'L DEPTH PER L.F.	PP-PT-04	94
5' DIA. X 5' DEPTH (H) ADD'L DEPTH PER L.F.	PP-PT-05	147
6' DIA. X 5' DEPTH (H) ADD'L DEPTH PER L.F.	PP-PT-06	212
3" RISER RINGS 24" DIA. CAST IRON FRAME & COVER ASSEMBLY PROCEDURE SHEET - 4' DIA. ASSEMBLY PROCEDURE SHEET - 5', 6' DIA.	MHRR IS-INST-MH-OSG IS-INST-MH	SEE 3" RISER RINGS SEE HEAVY DUTY TANK EXTENSION ACCESSORIES