



# WATER METER PIT

O:\Drawings\New Stuff after 2-26-10\MPL\WMPGEN.DWG

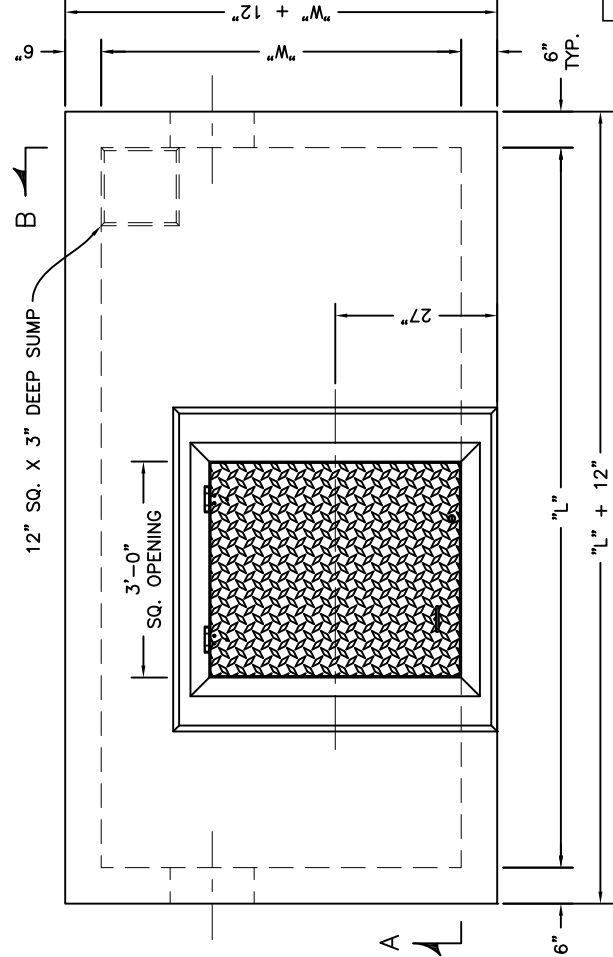
- A: SPECIFICATIONS:  
 CONCRETE: 4,000 P.S.I. @ 28 DAYS  
 ENTRAINED AIR: 5% - 9%  
 STEEL: A.S.T.M. A496-A615  
 GRADE 60-60 KSI  
 DESIGN LOADING: A.S.H.T.O. HS-20-44  
 WITH 30% IMPACT AND  
 EQUIVALENT SOIL PRESSURE  
 OF 130 (PSF). FLOTATION  
 FORCES NOT ACCOUNTED FOR.
- B: SPECIFICATIONS:  
 CONCRETE: 4,000 P.S.I. @ 28 DAYS  
 ENTRAINED AIR: 5% - 9%  
 STEEL: A.S.T.M. A496-A615  
 GRADE 60-60 KSI  
 DESIGN LOADING: A-0.3/300PSF/WALKWAYS.  
 FLOTATION FORCES NOT  
 ACCOUNTED FOR.
- WEIGHT: TOP SECTION: \_\_\_\_\_ LBS  
 BOTTOM SECTION: \_\_\_\_\_ LBS  
 TOTAL: \_\_\_\_\_ LBS

NOTE:  
 TRAFFIC LOADED ALUMINUM HATCHES ARE NOT DESIGNED FOR PLACEMENT IN DELIBERATE TRAFFIC AREAS. IF REQUIRED, UPGRADE TO GALVANIZED STEEL.

- HOLES - CONTRACTOR TO GROUT  
 WATERTIGHT BOOT SEAL  
 LINK SEAL WITH STEEL SLEEVE  
 LADDER ONLY  
 LADDER WITH INTEGRAL LADDER UP POST  
 LADDER WITH SEPARATE LADDER UP POST

**OPTION II**  
 HATCH CAST IN FLUSH AS REQ'D  
 EXTEND DRAIN COUPLING TO OUTSIDE VAULT WALL

- NON-TRAFFIC HATCH (SIDE VIEW)  
 TRAFFIC HATCH (SIDE VIEW)

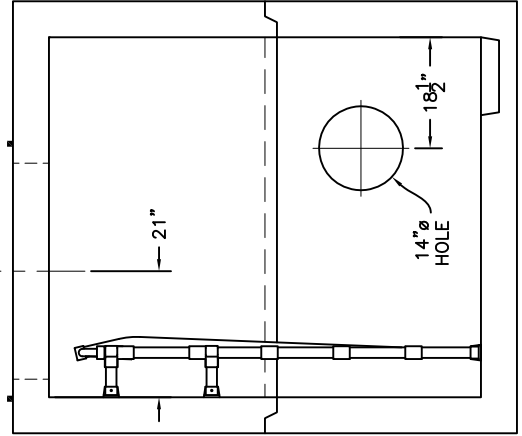


TOP VIEW

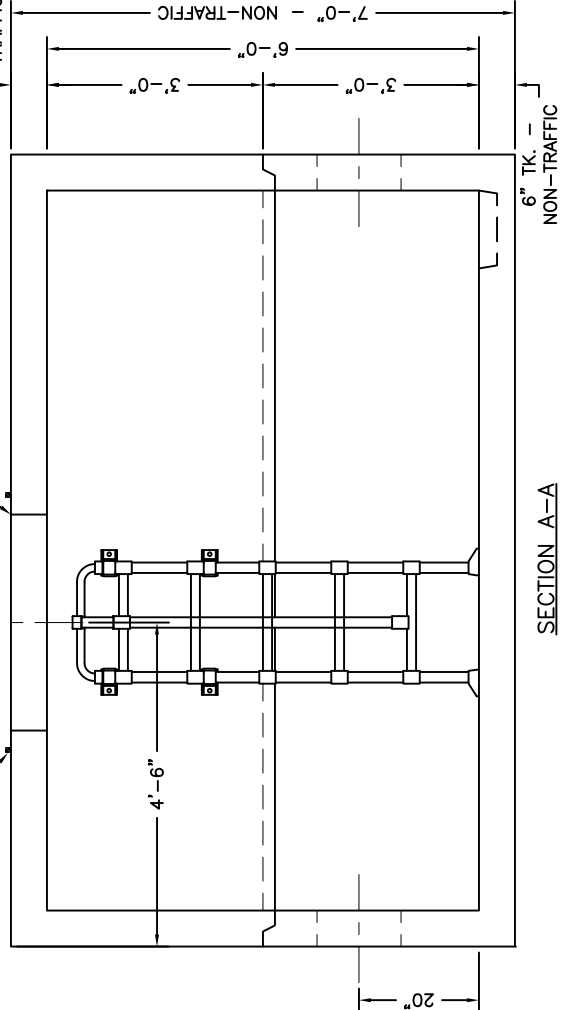
- NON-TRAFFIC HATCH (FRONT VIEW)  
 TRAFFIC HATCH (FRONT VIEW)

1" SQ. BUTYL RUBBER SEAL

"W"	"L"
4'	4'
5'	5'
6'-2"	6'-2"
6'-2"	8'
5'	10'
6'	12'
6'	13'
6'	16'
8'	12'
12'	12'



SECTION B-B



SECTION A-A