

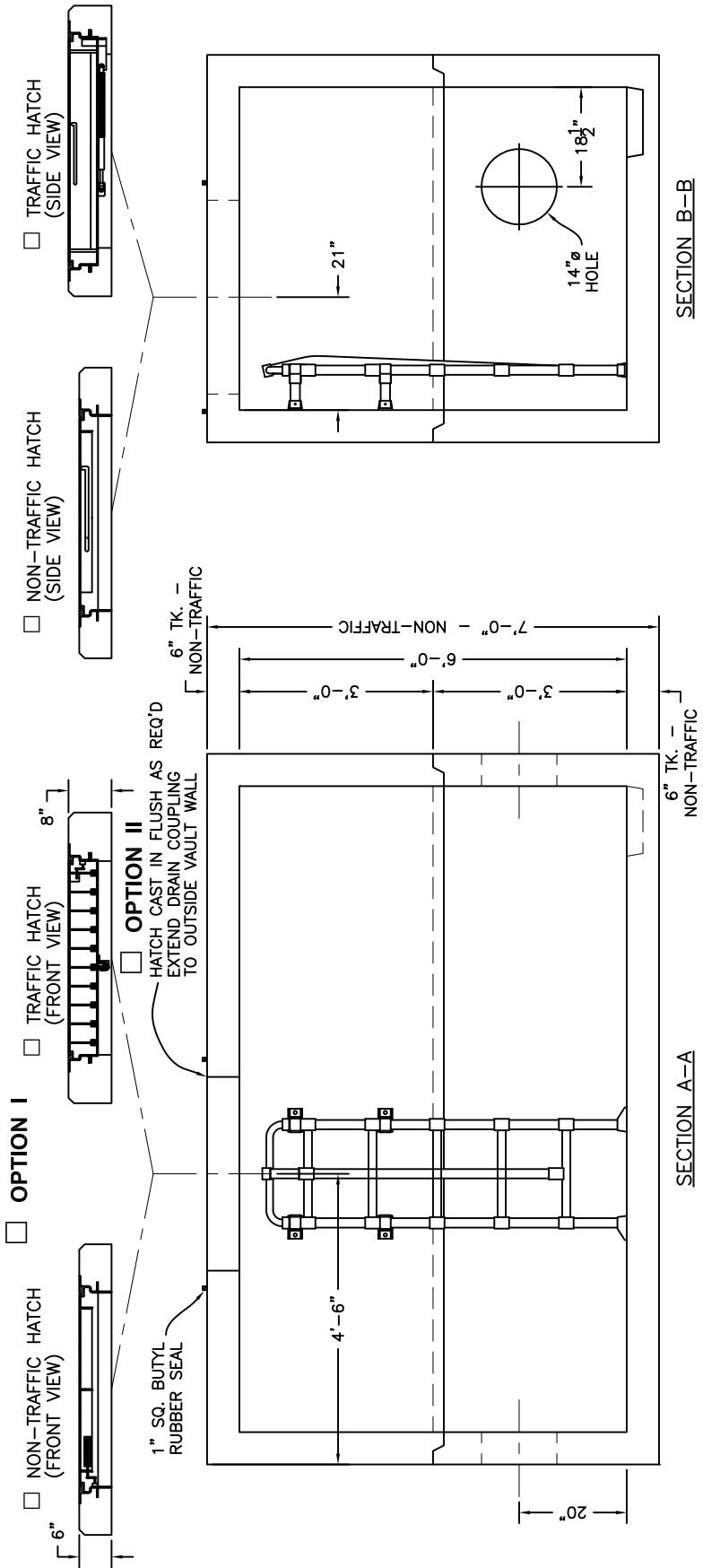
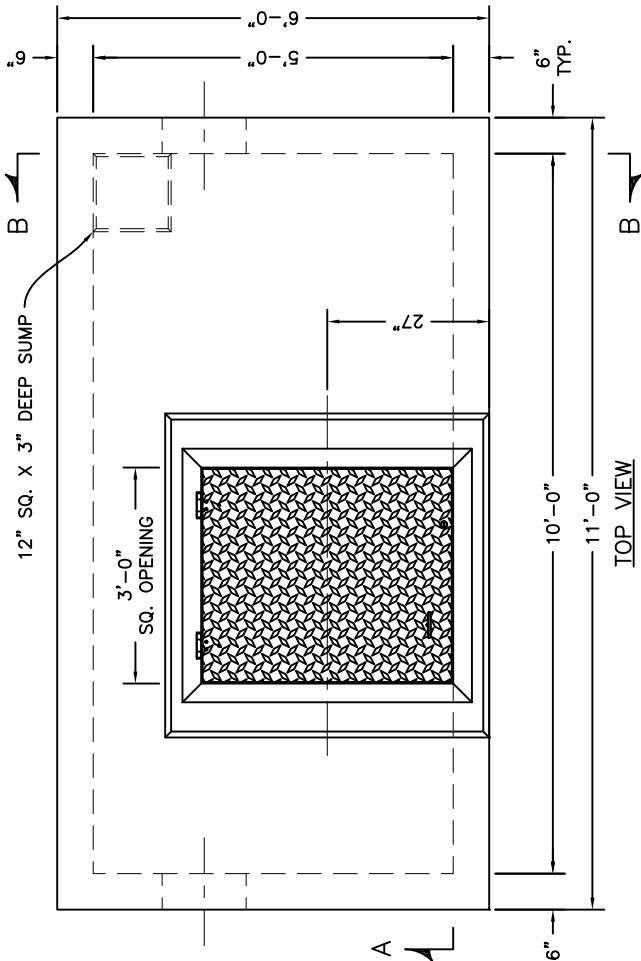


8" WATER METER PIT

O:\Drawings\New Stuff after 2-26-10\MPL\WMP510.DWG

- A: SPECIFICATIONS:
 CONCRETE: 4,000 P.S.I. @ 28 DAYS
 ENTRAINED AIR: 5% - 9%
 STEEL: A.S.T.M. A496-A615
 GRADE 60-60 KSI
 DESIGN LOADING: A.S.H.T.O. HS-20-44
 WITH 30% IMPACT AND
 EQUIVALENT SOIL PRESSURE
 OF 130 (PSF). FLOTATION
 FORCES NOT ACCOUNTED FOR.
- B: SPECIFICATIONS:
 CONCRETE: 4,000 P.S.I. @ 28 DAYS
 ENTRAINED AIR: 5% - 9%
 STEEL: A.S.T.M. A496-A615
 GRADE 60-60 KSI
 DESIGN LOADING: A-0.3/300PSF/WALKWAYS.
 FLOTATION FORCES NOT
 ACCOUNTED FOR.
- WEIGHT: TOP SECTION: 13,200 LBS.
 BOTTOM SECTION: 13,200 LBS.
 TOTAL: 26,400 LBS.

NOTE:
 TRAFFIC
 LOADED
 ALUMINUM
 HATCHES ARE
 NOT DESIGNED
 FOR PLACEMENT
 IN DELIBERATE
 TRAFFIC AREAS.
 IF REQUIRED, *
 UPGRADE TO
 GALVANIZED
 STEEL.



- HOLES - CONTRACTOR TO GROUT
 WATERTIGHT BOOT SEAL
 LINK SEAL WITH STEEL SLEEVE
 LADDER ONLY
 LADDER WITH INTEGRAL LADDER UP POST
 LADDER WITH SEPARATE LADDER UP POST