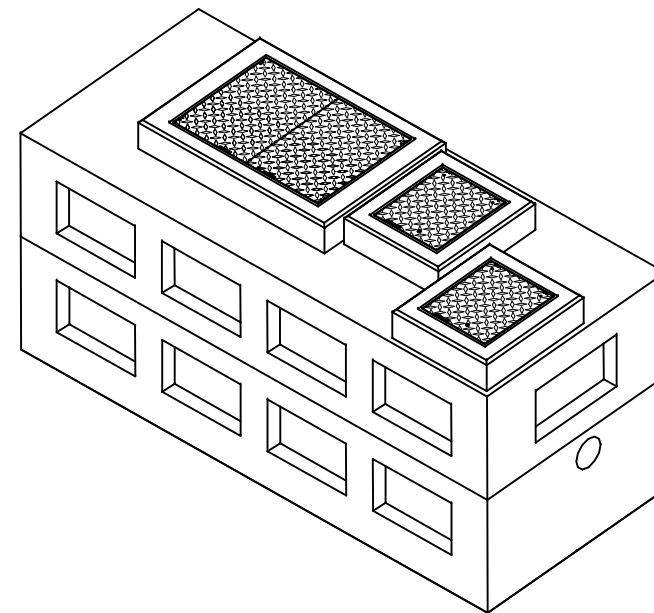


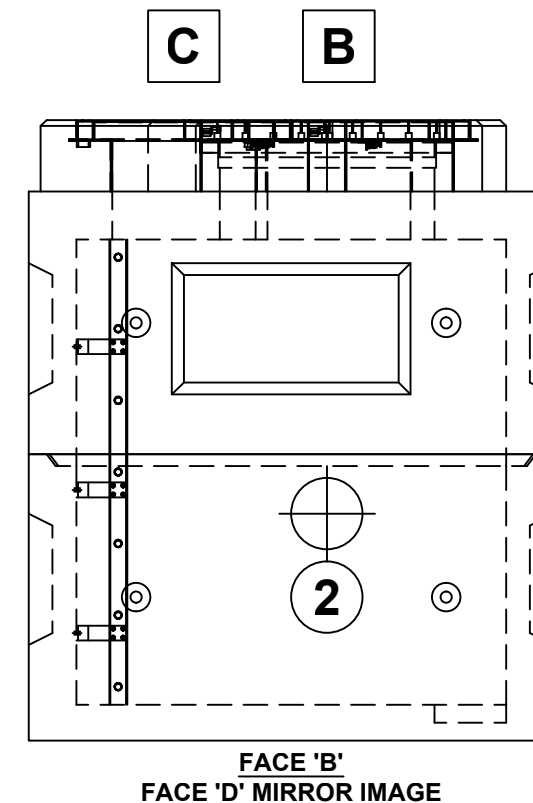
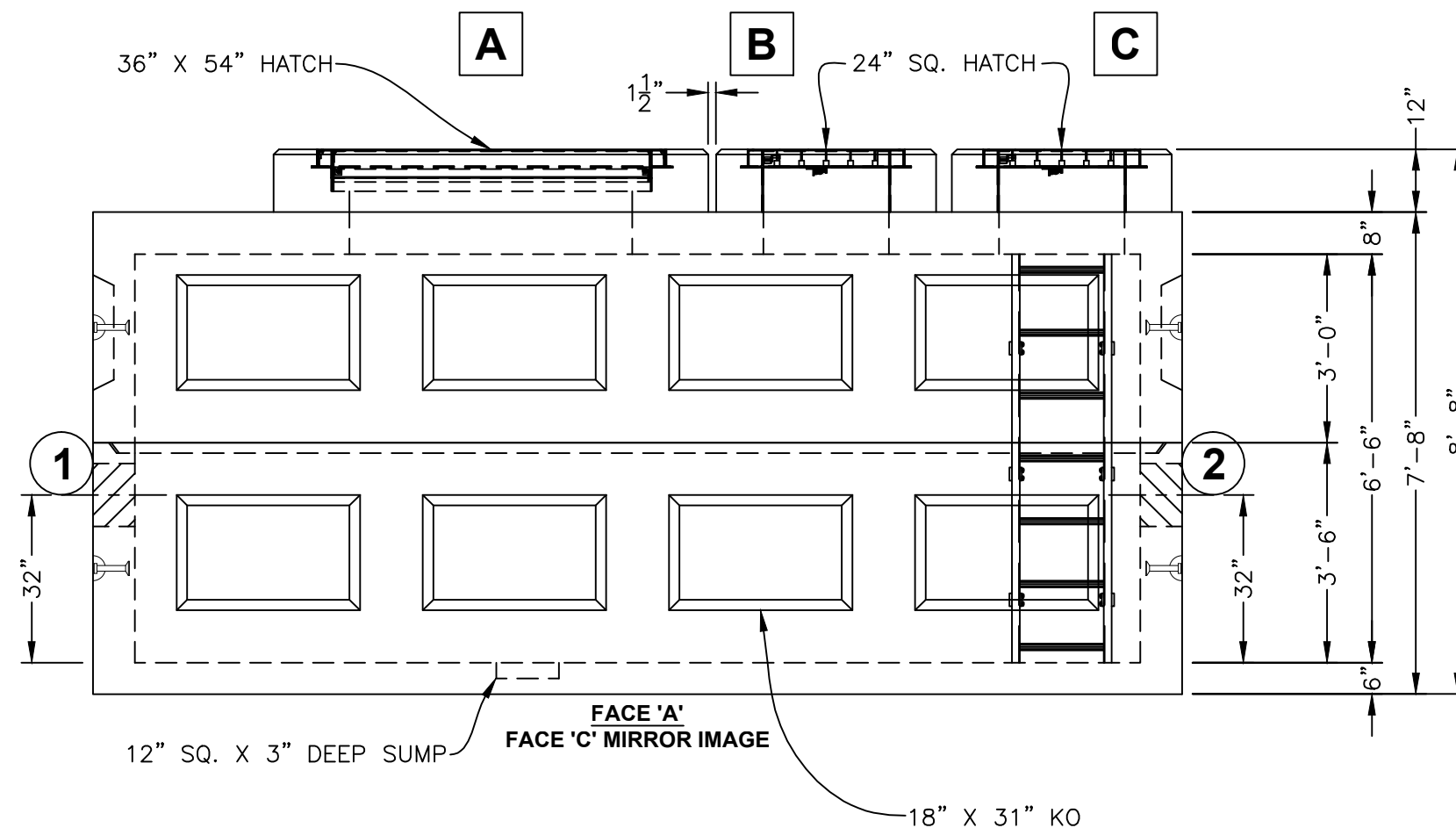
NOTE: SIZE, QTY. & LOCATION OF COVERS VARIES AND IS JOB SPECIFIC. CURRENT DETAILS SHOWN AS EXAMPLE ONLY



SPECIFICATIONS:
 CONCRETE: 5,000 P.S.I. @ 28 DAYS.
 ENTRAINED AIR: 5% - 9%.
 STEEL: A.S.T.M. A496-A615 GRADE 60-60 KSI.
 DESIGN LOADING: A.A.S.H.T.O. H20 WITH 30% IMPACT AND EQUIVALENT SOIL PRESSURE OF 130 (PCF). FLOTATION FORCES NOT ACCOUNTED FOR.
 COVER: 0 - 2'.
 WATER TABLE: 3' BELOW GRADE.

TABLE OF UNITS - 2 UNITS HIGH			
MARK	QTY	VOL (yd ³)	WT (lbs.)
BOTTOM SECTION	1	5.786	25,460
TOP SECTION	1	5.561	24,470

APX PIECE WT.: CONCRETE + 10% FACTOR OF SAFETY. WEIGHTS ARE APPROXIMATE.



2 SECTS. HIGH

REV. NO.	DATE	DESCRIPTION

PREPARED FOR: _____ ACCT # _____

JOB ID: _____
 DATE: 5/1/14 SHEET TITLE: PLAN & PROFILE DRAWN BY: DAR
 SCALE: N.T.S. CK'D BY: SDA
 PROJECT: _____

6'-0" X 16'-0" METER VAULT WITH LIGHTENING PANELS

KISTNER DWG NO: KCP-WMP-6x16G. CONTRACT DWG NO: _____
 KISTNER SHIT NO: _____ NYS DOT DWG NO: _____

KISTNER CONCRETE PRODUCTS, INC.
 5550 HINMAN ROAD
 LOCKPORT, NEW YORK 14094
 PHONE 716-434-6157
 PROPRIETARY INFORMATION
 ALL RIGHTS OF KISTNER CONCRETE PRODUCTS, INC.