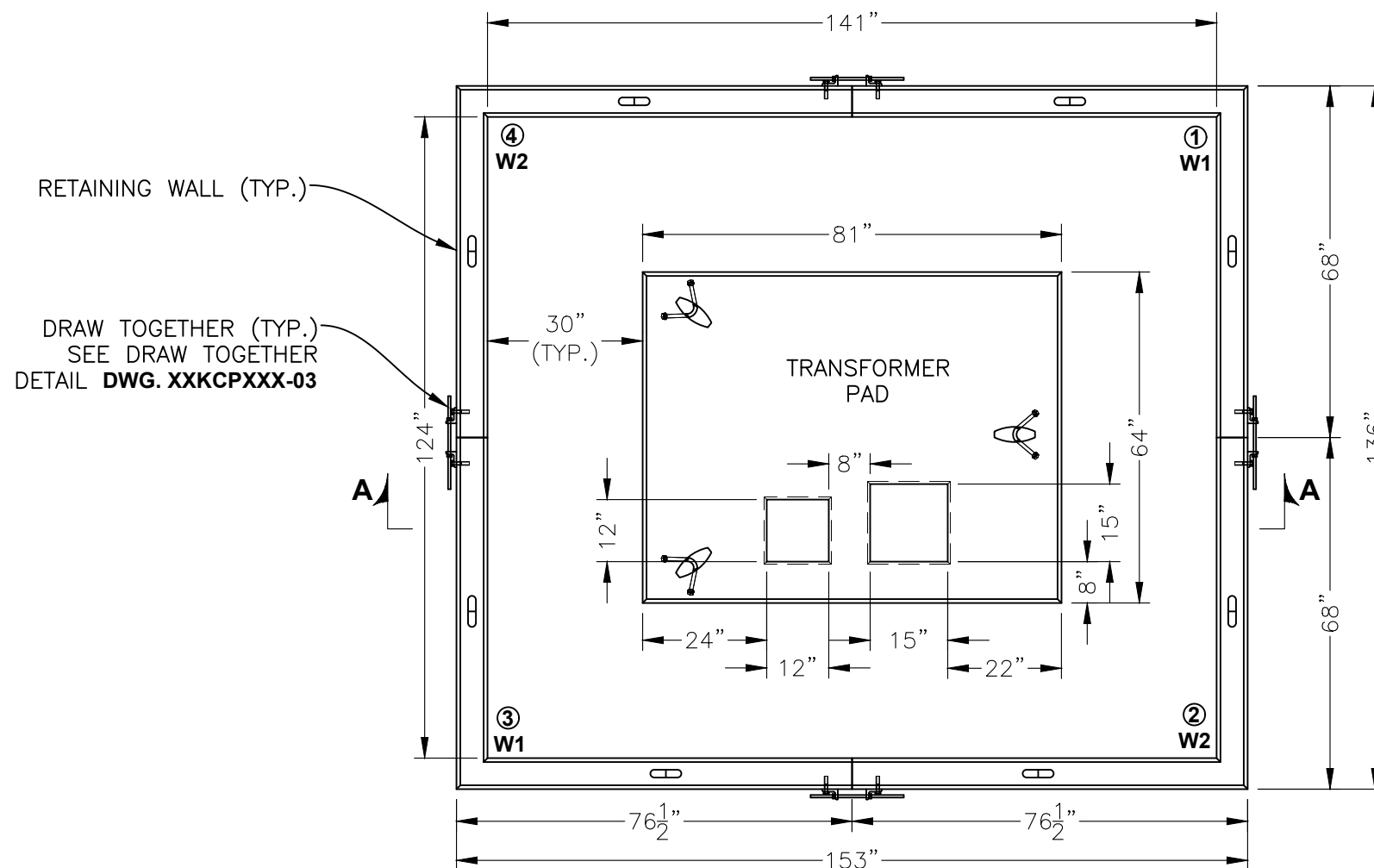
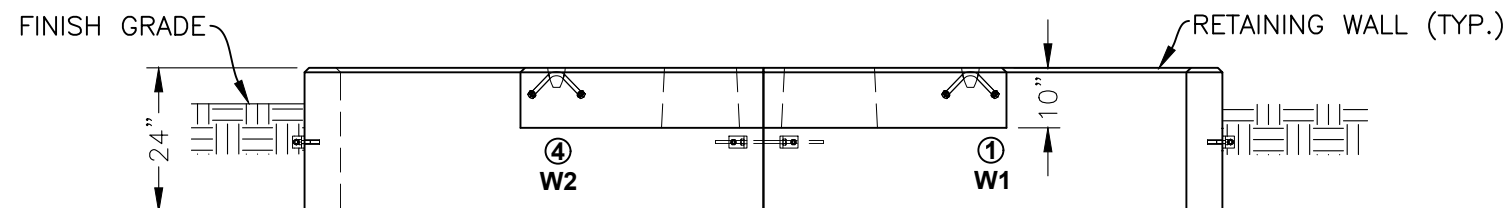


NATIONAL GRID TRANSFORMER PAD & CURB - TYPE '8A'



PLAN VIEW



SECTION A-A

NOTE: RETAINING WALLS 2 & 3
REMOVED FOR CLARITY

SPECIFICATIONS

CONCRETE:	5,000 PSI @ 28 DAYS
ENTRAINED AIR:	6% ±1%
STEEL:	#5-ASTM A496-A615 GRADE 60-60 KSI
	2" COVER MINIMUM
CHAMFER:	3/4" TOP EDGES OF ALL PIECES
WEIGHT:	PAD 4399 LBS.
	CURB SECTION 1850 LBS

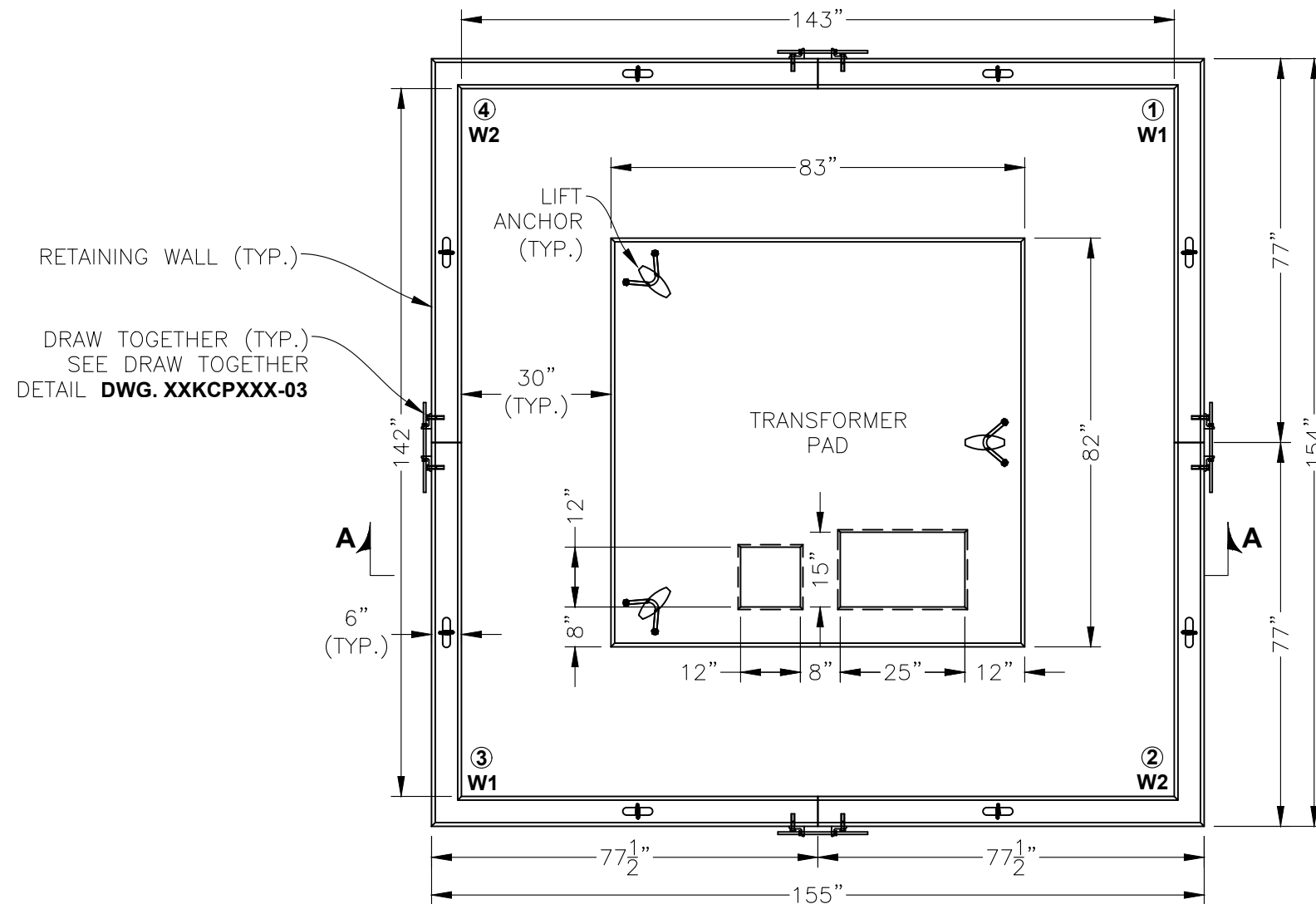
KCP PRODUCT CODES:
CURB ONLY - TP-NGUF8A-C
PAD ONLY - TP-NGUF8A-P
CURB & PAD - TP-NGUF8A-P & C

<input type="checkbox"/> Approved <input type="checkbox"/> Approved As Noted		By: _____ DATE _____	
DATE: 12/29/22 SCALE: N.T.S.		SHEET TITLE: NATIONAL GRID TRANSFORMER PAD & CURB - TYPE '8A' PROJECT: 15kV, 75-500 KVA PRECAST CONCRETE FOUNDATION FOR 3 PHASE PAD MOUNTED TRANSFORMER MS 2582 STD ITEM: UF8A ITEM ID: 9200896	
CONTRACT DWG NO: _____ KISTNER PROJECT NO: _____		SHT NO: 01 KISTNER DWG NO: _____	
DRAWN BY: MAK CK'D BY: MJK		KISTNER CONCRETE PRODUCTS, INC. 5550 HINMAN ROAD LOCKPORT, NEW YORK 14094 PHONE 716-434-6157 PROPRIETARY INFORMATION ALL RIGHTS OF KISTNER CONCRETE PRODUCTS, INC.	

NATIONAL GRID TRANSFORMER PAD & CURB - TYPE '8B'

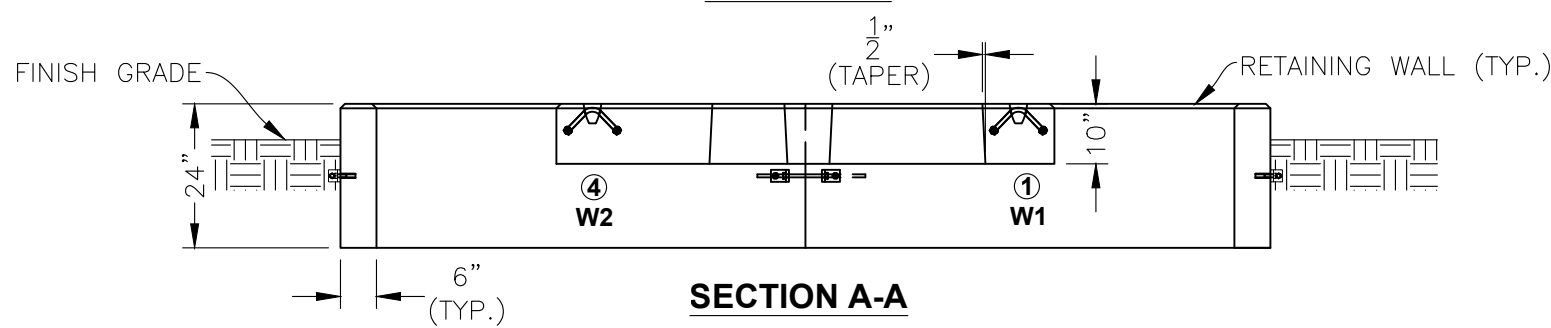
SPECIFICATIONS

CONCRETE: 5,000 PSI @ 28 DAYS
 ENTRAINED AIR: 6% ±1%
 STEEL: #5-ASTM A496-A615 GRADE 60-60 KSI
 2" COVER MINIMUM
 CHAMFER: 3/4" TOP EDGES OF ALL PIECES
 WEIGHT: PAD 5,139 LBS.
 CURB SECTION 1,758 LBS



RETAINING WALL (TYP.)
 DRAW TOGETHER (TYP.)
 SEE DRAW TOGETHER
 DETAIL **DWG. XXKCPXXX-03**

PLAN VIEW



SECTION A-A

KCP PRODUCT CODES:
 CURB ONLY - TP-NGUF8B-C
 PAD ONLY - TP-NGUF8B-P
 CURB & PAD - TP-NGUF8B-P & C

<input type="checkbox"/> Approved <input type="checkbox"/> Approved As Noted		By: _____ DATE _____	
DATE: 12/29/22 SCALE: N.T.S.		SHEET TITLE: NATIONAL GRID TRANSFORMER PAD & CURB - TYPE '8B' PROJECT: 15kV, 750-2500 kVA PRECAST CONCRETE FOUNDATION FOR 3 PHASE PAD MOUNTED TRANSFORMER MS 2583 STD ITEM: UF8B ITEM ID: 9200897	
DRAWN BY: MAK CK'D BY: MJK		ACCT#: _____ REV. NO. DATE DESCRIPTION PREPARED FOR: _____	
CONTRACT DWG NO: _____ KISTNER PROJECT NO: _____		SHT NO: 02 KISTNER DWG NO: _____	
<p> KISTNER CONCRETE PRODUCTS, INC. 5550 HINMAN ROAD LOCKPORT, NEW YORK 14094 PHONE 716-434-6157 PROPRIETARY INFORMATION ALL RIGHTS OF KISTNER CONCRETE PRODUCTS, INC. </p>			

