



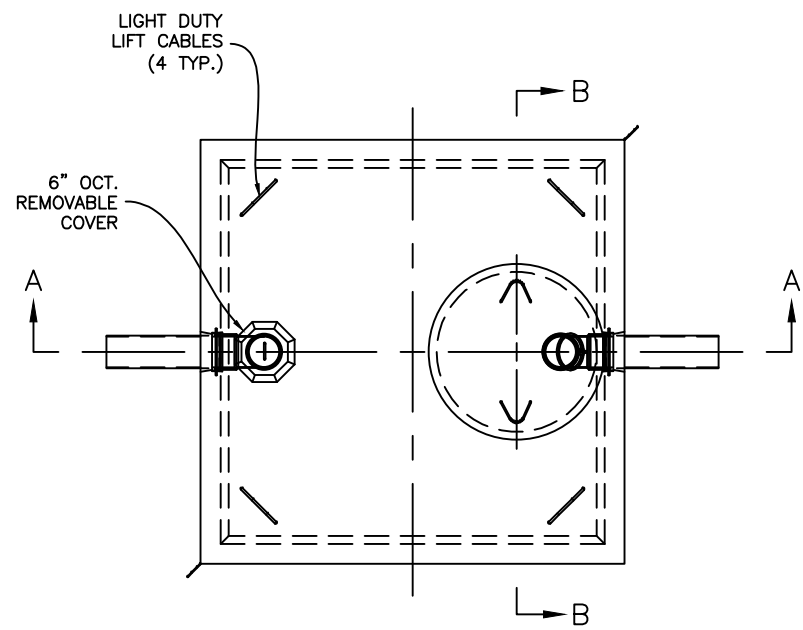
KISTNER CONCRETE PRODUCTS, INC.
 8713 READ ROAD
 E. PEMBROKE, N.Y.
 14056
 (716) 894-2267

PRODUCT DESIGNATION
 300 GALLON SEPTIC TANK

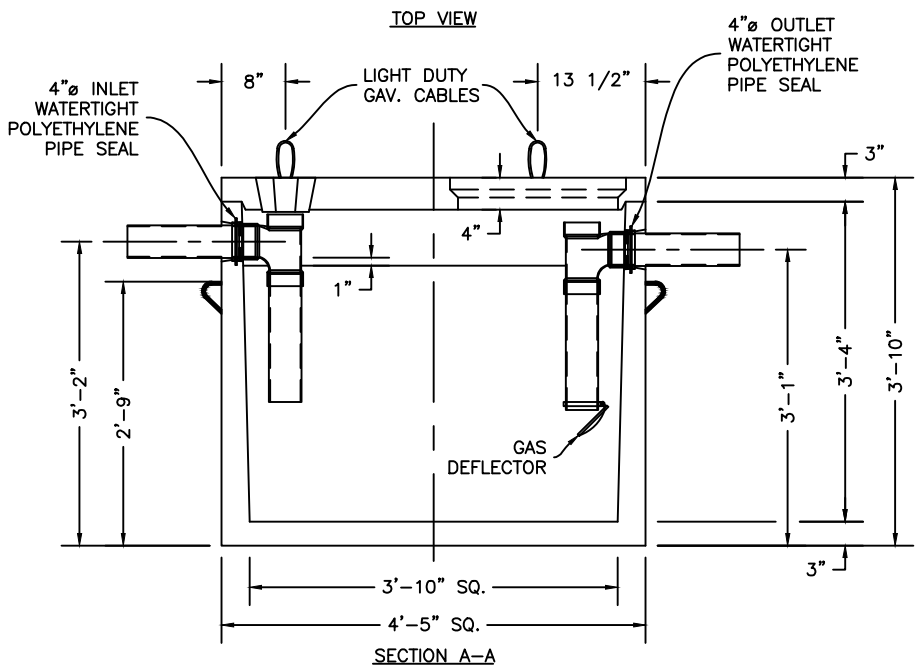
DWG. NO.
 ST-ST300
 5/6/13

SPECIFICATIONS:
 CONCRETE: 4000 P.S.I @ 28 DAYS.
 ENTRAINED AIR: 5% - 9%
 STEEL: A.S.T.M A496-A615 GRADE 60-60KSI.
 DESIGN LOADING: A-0.3/300PSF/WALKWAYS.
 FLOTATION FORCES NOT ACCOUNTED FOR.
 WEIGHT:
 TOP SECTION: 962 LBS.
 BOTTOM SECTION: 3,096 LBS.
 TOTAL: 4,058 LBS.

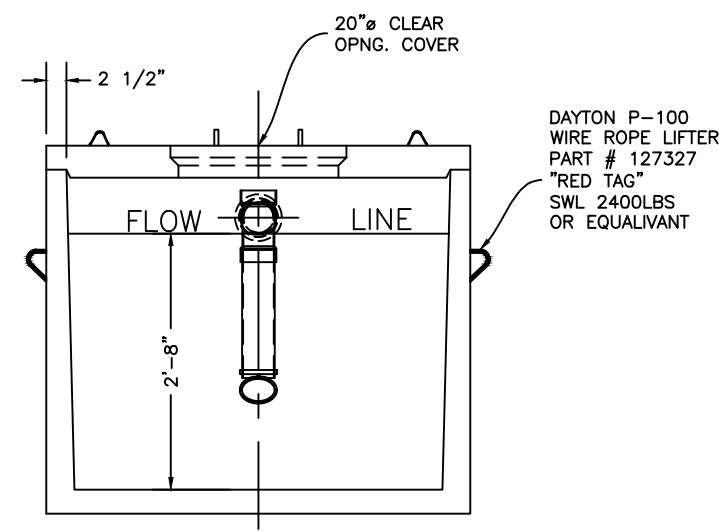
OUTLET BAFFLE: PIPE BAFFLE BY K.C.P
 OPTIONAL ITEMS: EFFLUENT FILTER
 GAS DEFLECTOR
 COVER OVER TANK: MAX 3' OF EARTH FILL.



TOP VIEW



SECTION A-A



SECTION B-B

L:\CADD\PRODUCTS\001a-0300 gallon tank\st300.dwg