



KISTNER CONCRETE PRODUCTS INC.  
 8713 READ ROAD  
 E. PEMBROKE, N.Y.  
 14056  
 (716) 894-2267

PRODUCT DESIGNATION

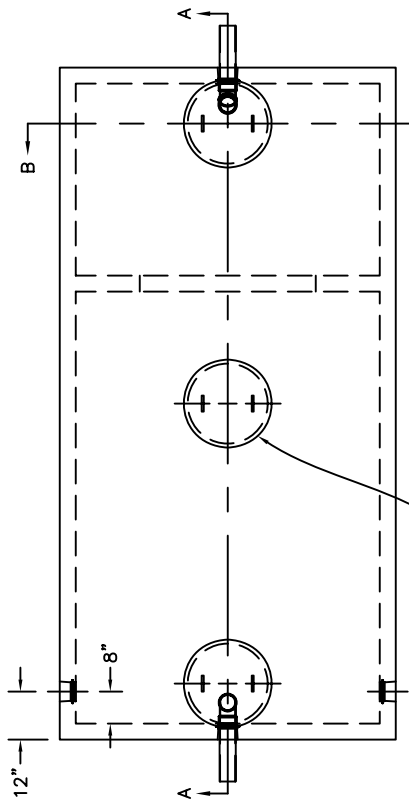
DWG. NO.

6000 GALLON SEPTIC TANK

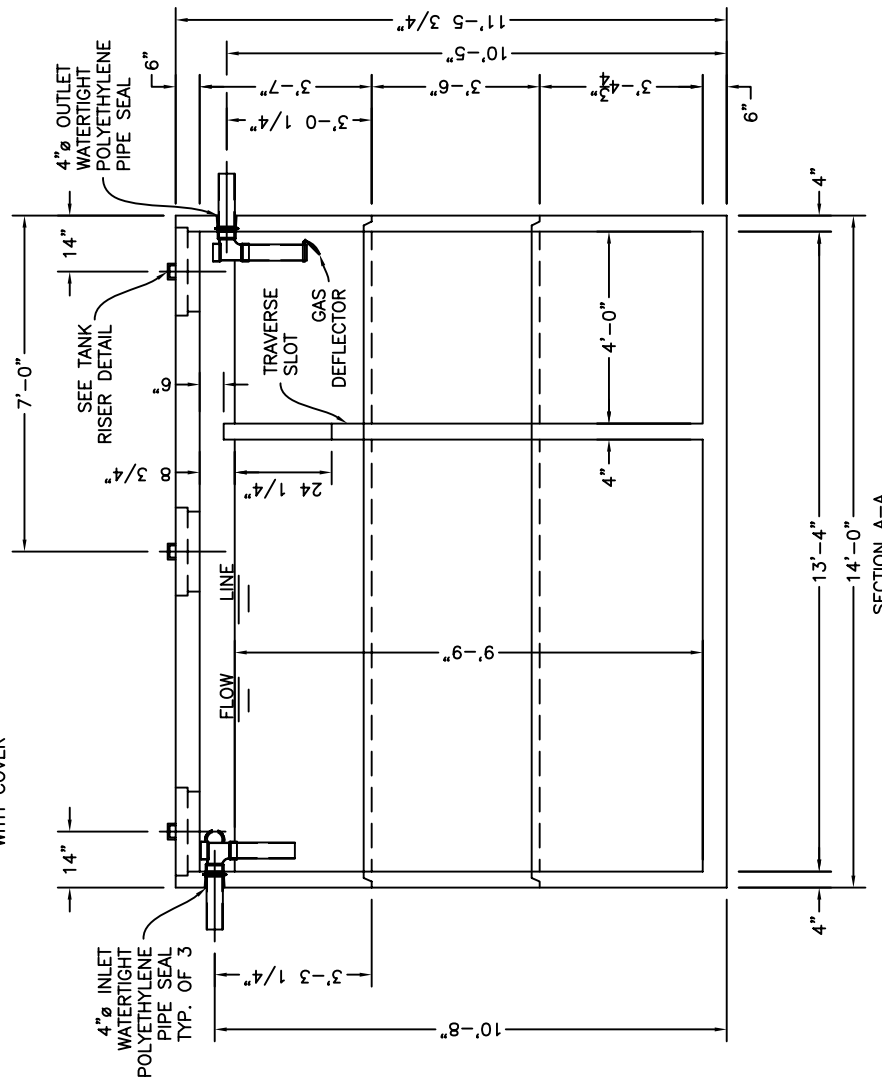
ST-ST6000 ©  
 1/16/07

SPECIFICATIONS:  
 CONCRETE: 4000 P.S.I. @ 28 DAYS.  
 ENTRAINED AIR: 5% - 9%  
 STEEL: A.S.T.M A496-A615  
 GRADE 60-60KSI.  
 DESIGN LOADING: A-0.3/300PSF/WALKWAYS.  
 FLOTATION FORCES NOT ACCOUNTED FOR.  
 PIPING: INLET/OUTLET TEES AND DROP LEGS SUPPLIED AND INSTALLED BY G.C.  
 WEIGHT: TOP SECTION: 16,829 LBS.  
 MID-SECTION: 8,936 LBS.  
 BOTTOM SECTION: 16,655 LBS.  
 TOTAL: 42,420 LBS.  
 OUTLET BAFFLE: PIPE BAFFLE BY K.C.P  
 OPTIONAL ITEMS:  EFFLUENT FILTER  GAS DEFLECTOR

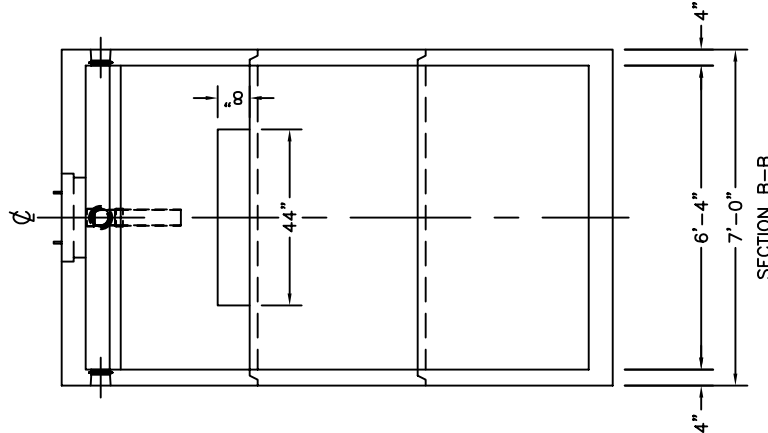
COVER OVER TANK: MAX 3' OF EARTH FILL.



TOP VIEW



SECTION A-A



SECTION B-B