



KISTNER CONCRETE PRODUCTS INC.
8713 READ ROAD
E. PEMBROKE, N.Y.
14056
(716) 894-2267

PRODUCT DESIGNATION

3500 GALLON SEPTIC TANK

DWG. NO.

ST-ST3500 ©

1-16-07

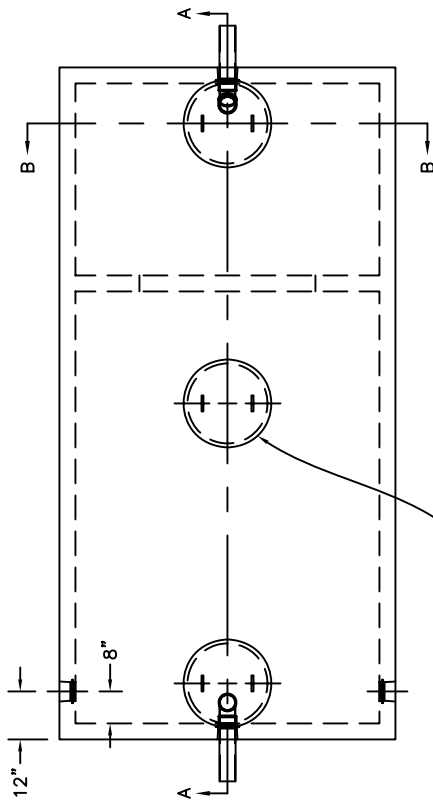
SPECIFICATIONS:
CONCRETE: 4000 P.S.I @ 28 DAYS.
ENTRAINED AIR: 5% - 9%
STEEL: A.S.T.M A496-A615 GRADE 60-60KSI.
DESIGN LOADING: A-0.3/300PSF/WALKWAYS. FLOTATION FORCES NOT ACCOUNTED FOR.

WEIGHT: TOP SECTION: 16,829 LBS.
BOTTOM SECTION: 16,070 LBS.
TOTAL: 32,899 LBS.

OUTLET BAFFLE: PIPE BAFFLE BY K.C.P.

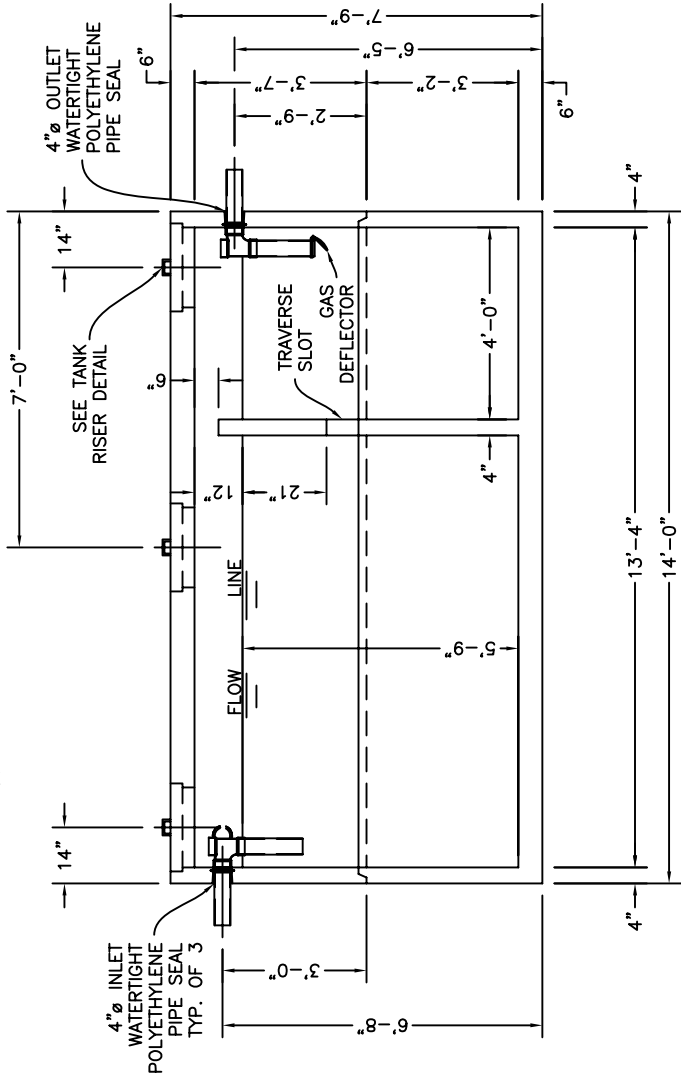
OPTIONAL ITEMS: EFFLUENT FILTER
 GAS DEFLECTOR

COVER OVER TANK: MAX 3' OF EARTH FILL.

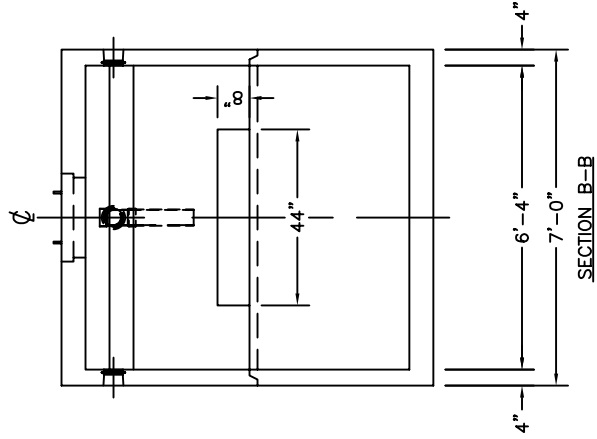


TOP VIEW

20"Ø CLEAR OPNG. WITH COVER



SECTION A-A



SECTION B-B