



KISTNER CONCRETE PRODUCTS INC.  
8713 READ ROAD  
E. PEMBROKE, N.Y.  
14056  
(716) 894-2267

PRODUCT DESIGNATION  
**1000 GAL. SEPTIC TANK - LOW PROFILE**

DWG. NO.  
**ST-ST1000II-LP**  
10-17-19

**SPECIFICATIONS:**

CONCRETE:  
ENTRAINED AIR:  
STEEL:

4000 P.S.I @ 28 DAYS.  
5% - 9%  
A.S.T.M A496-A615  
GRADE 60-60KSI.

DESIGN LOADING:

A-0.3/300PSF/WALKWAYS.  
FLOTATION FORCES NOT  
ACCOUNTED FOR.

NOTES:

INLET INVERT IS 2" ABOVE  
OUTLET INVERT  
ONE (1) INLET & ONE (1)  
OUTLET BAFFLE SUPPLIED.  
INSTALLED BY G.C.

WEIGHT:

TOP SECTION: 3,426 LBS.  
BOTTOM SECTION: 10,110 LBS.  
TOTAL: 13,536 LBS.

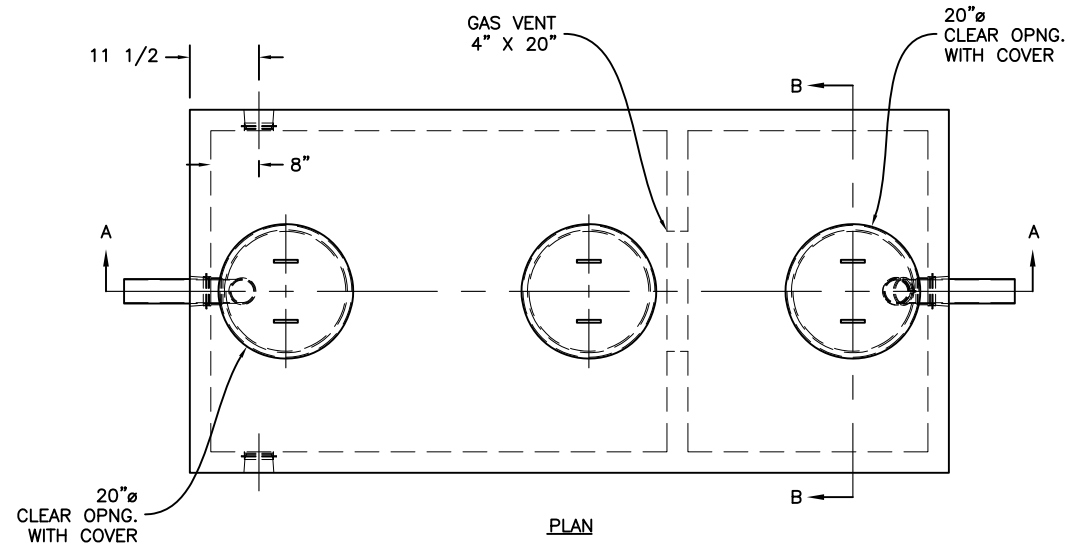
OUTLET BAFFLE:

PIPE BAFFLE BY K.C.P

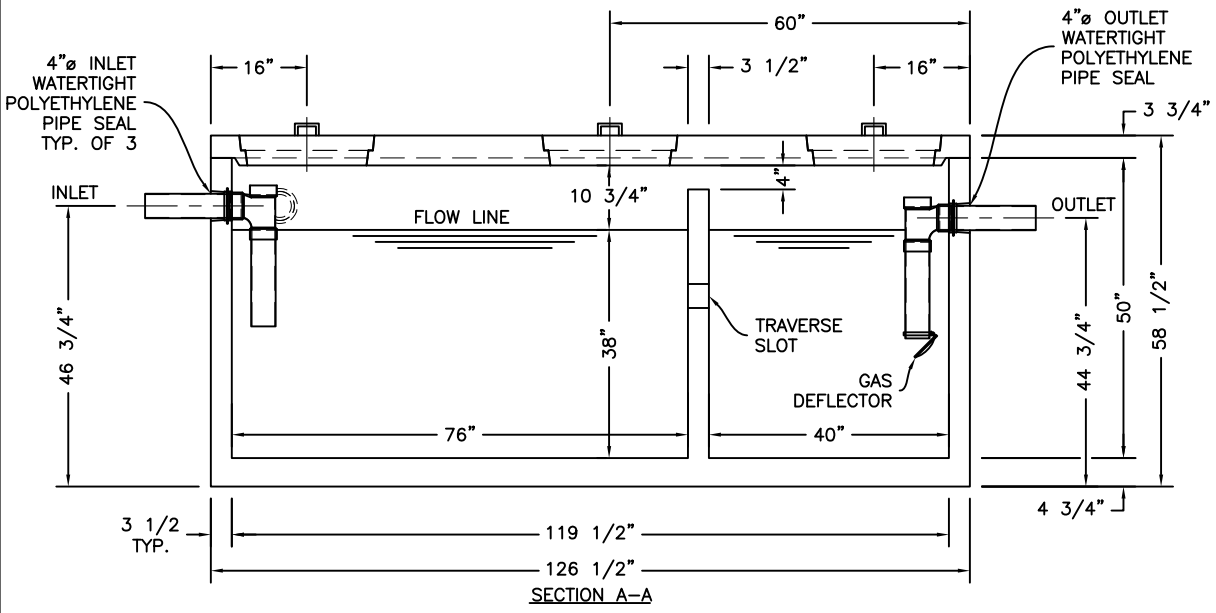
OPTIONAL ITEMS:

- EFFLUENT FILTER
- GAS DEFLECTOR

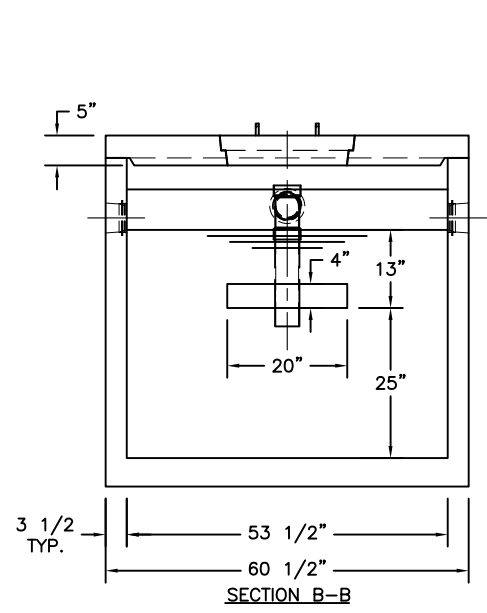
COVER OVER TANK: MAX 3' OF EARTH FILL



PLAN



SECTION A-A



SECTION B-B

L:\CADD\PRODUCTS\024-SquareRectangular-05x10.5-60X126\ST1000-II-LP.dwg