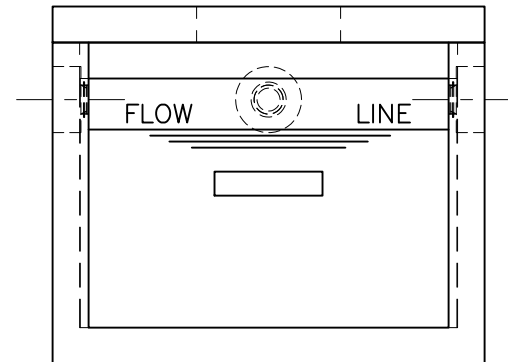
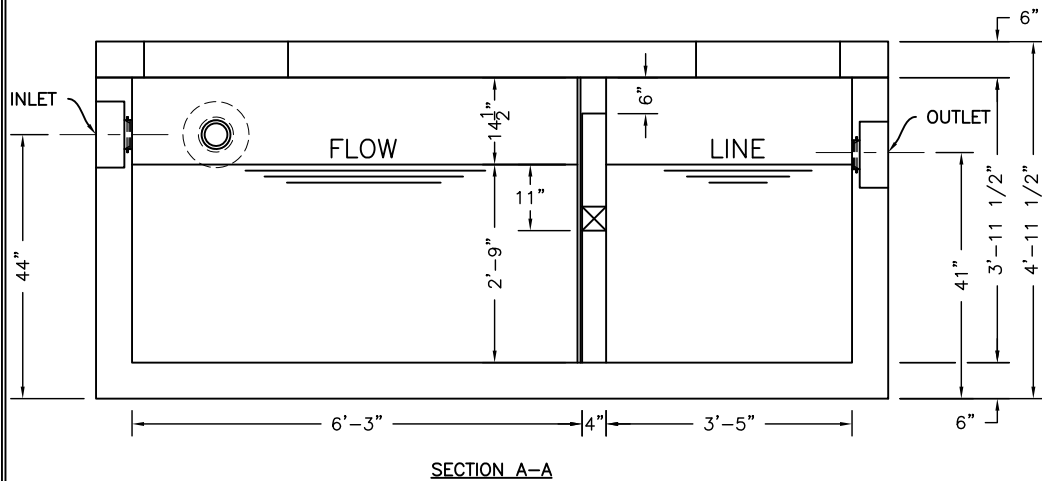
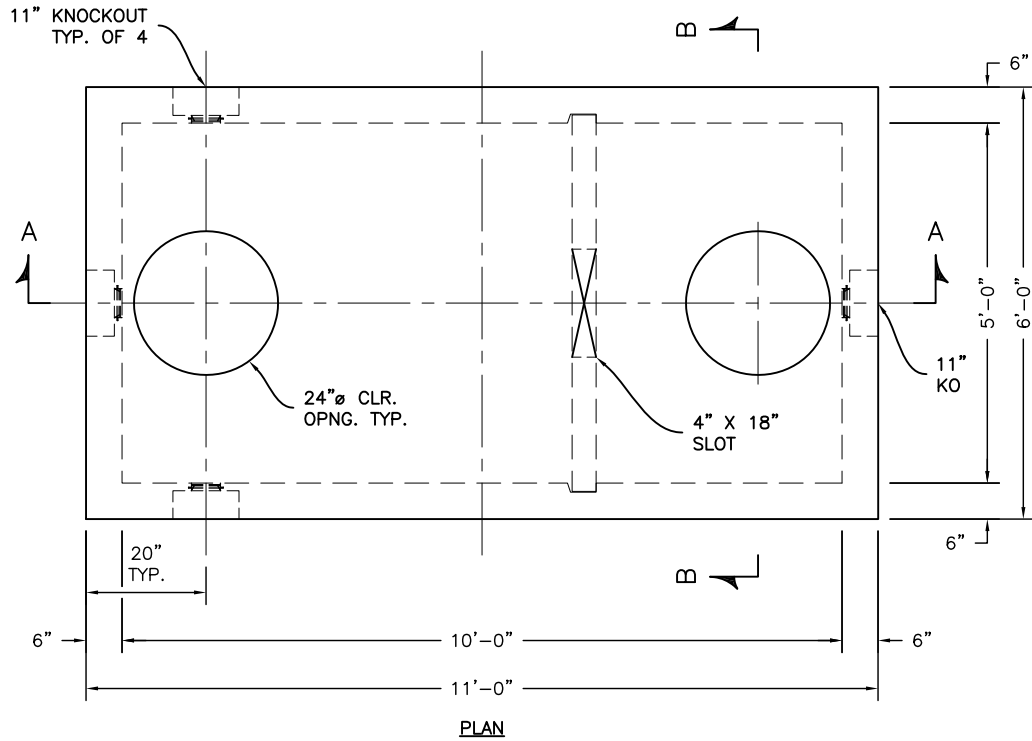


L:\CADD\PRODUCTS\024-SquareRectangular-05x10-60X120\Septic-Grease-Oil-Holding-Pump-StormPro\ST-5X10-T-N-0.dwg



SP-7A

SPECIFICATIONS:
CONCRETE:
ENTRAINED AIR:
STEEL:

6,500 P.S.I. @ 28 DAYS.
 5% - 8%.
 A.S.T.M. A496-A615
 GRADE 60-80 KSI.

DESIGN LOADING:

ACI 318-99 TRAFFIC. USE ACI LOAD FACTORS.
 A.A.S.H.T.O. METHOD OF DESIGN. EQUIVALENT
 SOIL PRESSURE OF 40 (PCF).

LIVE LOAD:

H2O.

EARTH FILL:

0 TO 6'.

WATER TABLE:

3' BELOW GRADE.

WEIGHT:

TOP SLAB:

4,423 LBS.

BOTTOM SECTION & BAFFLE WALL:

14,928 LBS.

TOTAL:

19,351 LBS.

BAFFLE:

4" BY KISTNER. LARGER BY CONTRACTOR.

WATERTIGHT ASSEMBLY IS THE RESPONSIBILITY OF THE INSTALLING CONTRACTOR. ASK FOR KISTNER "WATERTIGHT JOINT INSTALLATION" DETAIL.

PIPE OPENINGS STOCK:

PIPE SEALS REQUIRED

4" PVC - OPENING WITH SEAL - STOCK

6" PVC - OPENING STOCK - SEAL TO BE INSTALLED

8" PVC - OPENING STOCK - SEAL TO BE INSTALLED

GROUTED OPENINGS ONLY - REQUIRED

4" PVC - OPENING WITH SEAL - STOCK

6" PVC - STOCK KNOCKOUT TO BE BROKEN OUT BY CONTRACTOR

8" PVC - STOCK KNOCKOUT TO BE BROKEN OUT BY CONTRACTOR

FOR RISER, FRAME, AND COVER: SEE "TRAFFIC TANK EXTENSIONS"



KISTNER CONCRETE PRODUCTS INC.
 8713 READ ROAD
 E. PEMBROKE, N.Y.
 14056
 (716) 894-2267

PRODUCT DESIGNATION
1000 GALLON SEPTIC TANK
TRAFFIC - NEW

DWG. NO.
ST-1000-T-N-0
 12/13/16

