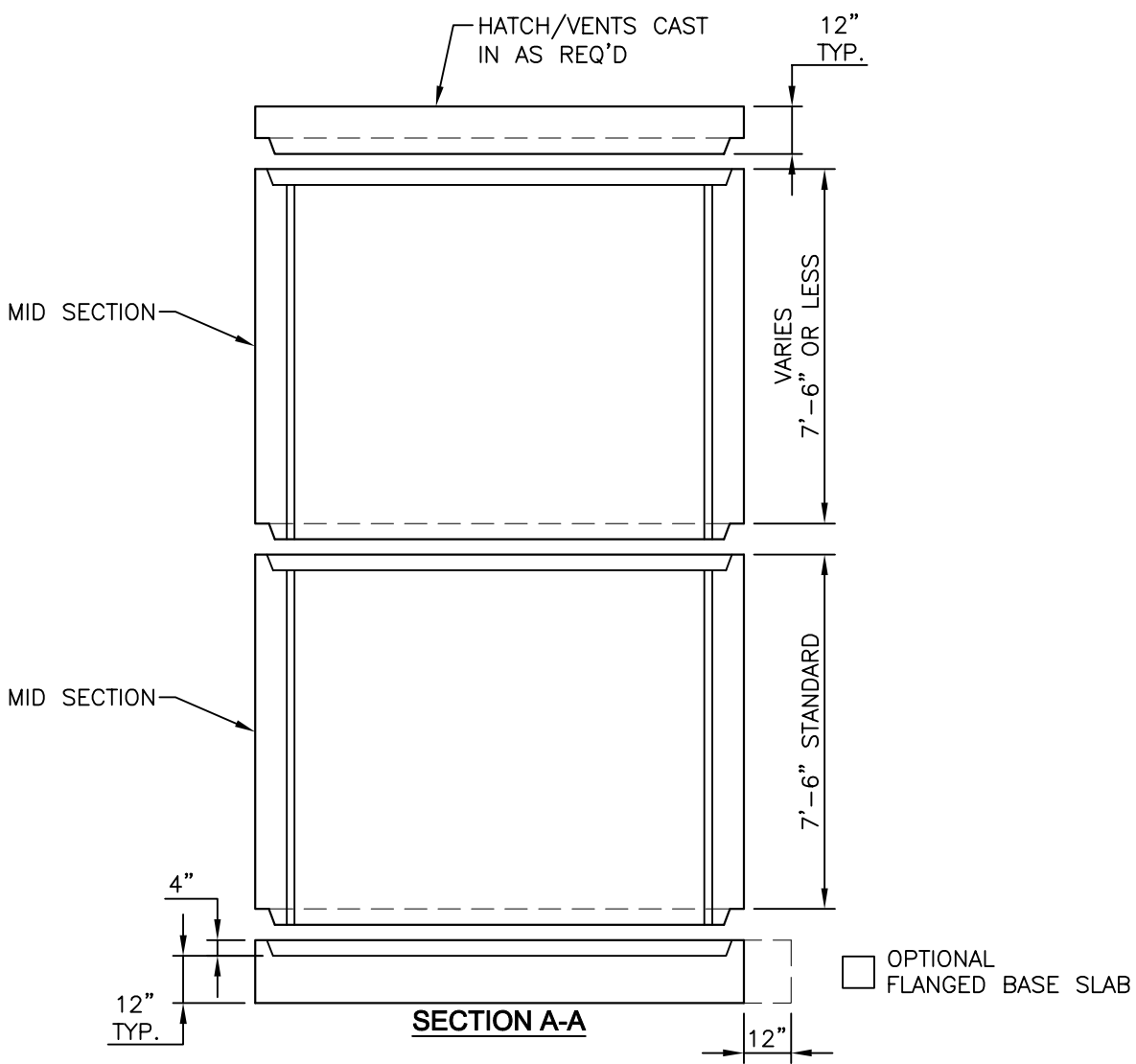


SPECIFICATIONS:  
 CONCRETE: 4,000 P.S.I. @ 28 DAYS.  
 ENTRAINED AIR: 5% - 9%.  
 STEEL: A.S.T.M. A496-A615  
 GRADE 60-60 KSI.  
 DESIGN LOADING: A.A.S.H.T.O. HS-20-44  
 WITH 30% IMPACT AND  
 EQUIVALENT SOIL PRESSURE  
 OF 130 (PSF). FLOTATION  
 FORCES NOT ACCOUNTED FOR.

FOR SIZES SEE DWG. SRS-3

FOR JOINT DETAIL SEE  
 DWG. SRS-4.

**PLAN**



OPTIONAL  
 FLANGED BASE SLAB

**SECTION A-A**

DATE: <b>3/3/17</b>	PROJECT: -----	SHEET TITLE: <b>STANDARD SQUARE AND RECTANGULAR STRUCTURES WITH SEPARATE BASE AND TOP SLAB</b>	SHEET NO: <b>01</b>
SCALE: <b>N.T.S.</b>			DWG. NO: <b>SRS-2_R1</b>
	KISTNER CONCRETE PRODUCTS, INC.	5550 HINMAN ROAD LOCKPORT, NEW YORK 14094 PHONE 716-434-8157	DRAWN BY: <b>MAK</b> CK'D BY: