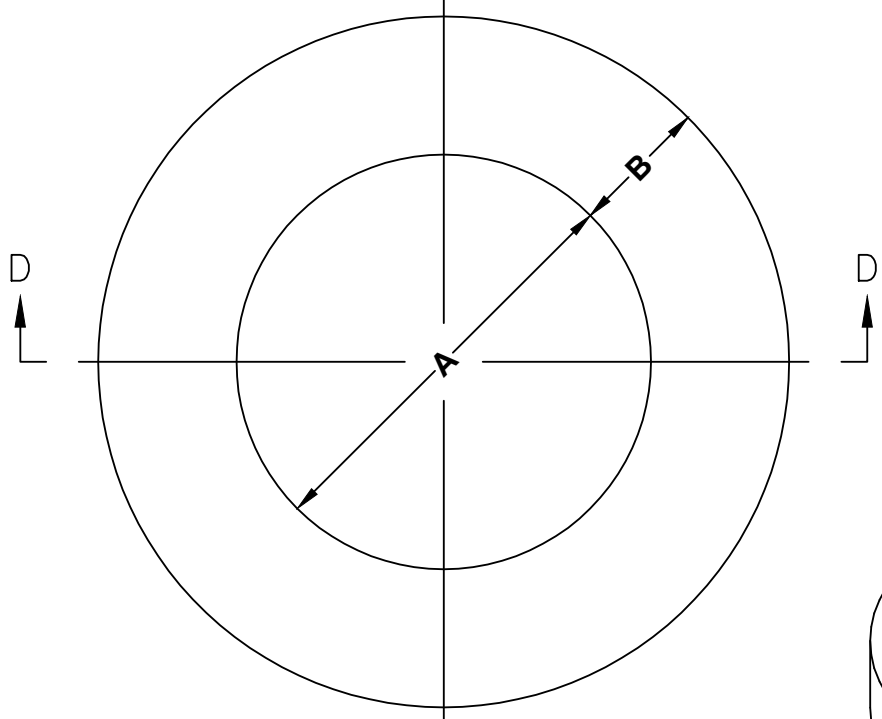
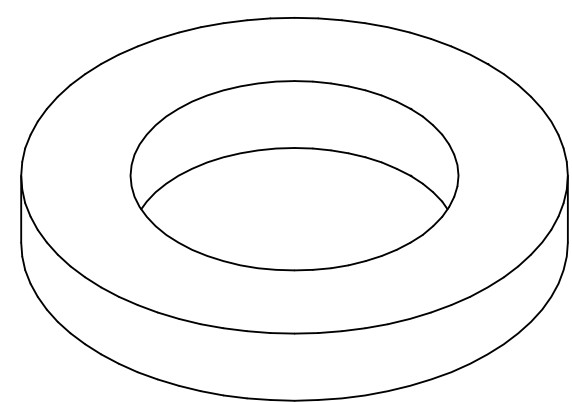


INSTALLATION DETAIL

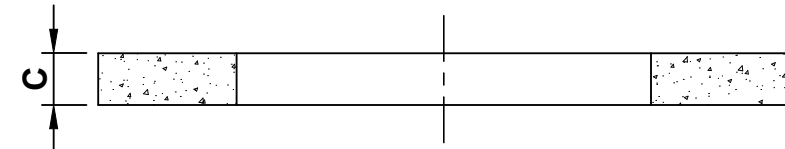
SPECIFICATIONS:
 CONCRETE: 4,000 P.S.I. @ 28 DAYS.
 ENTRAINED AIR: 5% - 9%.
 STEEL: A.S.T.M. A496-A615 GRADE 60-60 KSI.
 DESIGN LOADING: A.A.S.H.T.O. HS-20-44 WITH 30% IMPACT AND EQUIVALENT SOIL PRESSURE OF 130 (PCF).
 A.S.T.M. C478.



PLAN



ISOMETRIC VIEW



SECTION D-D

✓	PRODUCT CODE	A (INSIDE DIAMETER)	B	C (THICKNESS)	WEIGHT (LBS.)	CODE	QTY.	DETAIL - I.D.
COMMERCIAL								
	MHRR3	24"∅	8"	3"	205	MHRR-24-1	1	INDIVIDUAL
					784	MHRR-24-B-SSS	4	SUPER SHORT STACK
					1,568	MHRR-24-B-SS	8	SHORT STACK
COMMERCIAL								
	MHRR6	36"∅	8"	6"	730	MHRR-36-1	1	INDIVIDUAL
	MHRR12	36"∅	8"	12"	1,460	MHRR-36-1	1	INDIVIDUAL
D.O.T.								
	MHRR32-6	32"∅	8"	6"	545	MHRR-32-1	1	INDIVIDUAL
	MHRR3L-12	32"∅	8"	12"	1,090	MHRR-32-1	1	INDIVIDUAL

L:\CADD\PRODUCTS\MANHOLES\ RISER RINGS\MHRR_R1.dwg

DATE: 4/30/19	PRODUCT DESIGNATION: RISER RING EXTENSION	SHEET TITLE: RISER RING DETAILS	SHEET NO.: 01
SCALE: N.T.S.	<p>5550 HINMAN ROAD LOCKPORT, NEW YORK 14094 PHONE 716-434-6157</p>	1 5/1/19 REV. NO. DATE	DWG. NO.: MHRR_R1
			REVISED FORMAT & ADDED ISO. DESCRIPTION