

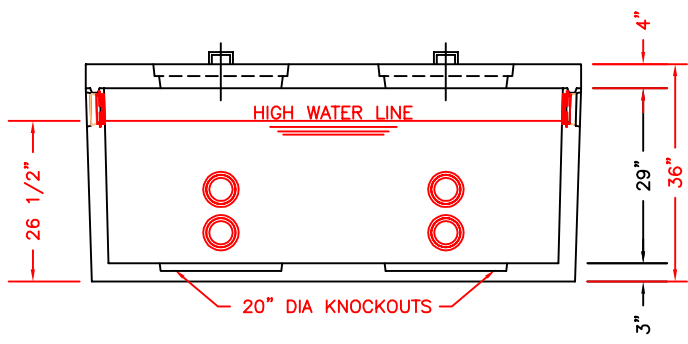
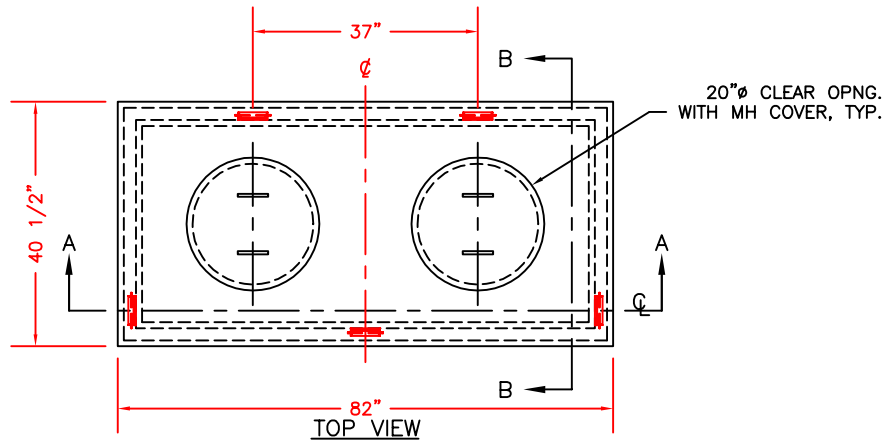


KISTNER CONCRETE PRODUCTS INC.
8713 READ ROAD
E. PEMBROKE, N.Y.
14056
(716) 894-2267

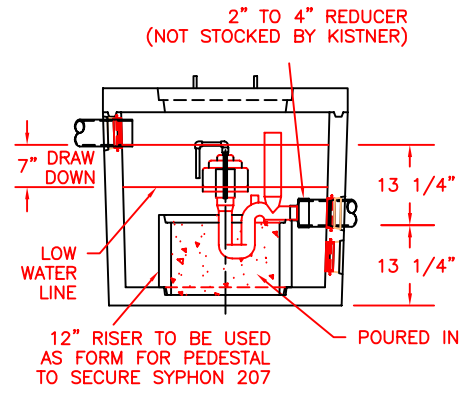
PRODUCT DESIGNATION
RESIDENTIAL SIPHON TANK -
LOW PROFILE 77/142 GALLON DOSE

DWG. NO.
DC-207-313 ©
8-4-94

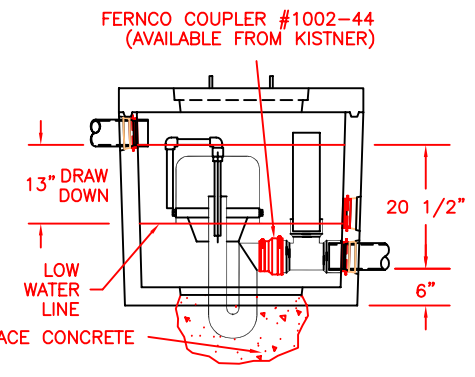
SPECIFICATIONS:
CONCRETE: 4,000 P.S.I. @ 28 DAYS.
ENTRAINED AIR: 5% - 9%.
STEEL: A.S.T.M. A496-A615 GRADE 60-60 KSI.
DESIGN LOADING: A-0.3/300PSF/WALKWAYS. FLOTATION FORCES NOT ACCOUNTED FOR.
WEIGHT:
TOP SECTION: 1082.6 LBS.
BOTTOM SECTION: 2416.6 LBS.
TOTAL: 3499.2 LBS.



SECTION A-A



SECTION B-B
(USING SIPHON 207)
77 GALLON DOSE
@ 30 G.P.M.



SECTION B-B
(USING SIPHON 313)
142 GALLON DOSE
@ 72 G.P.M.

NOTE:

- 1) TANK ACCOMMODATES ONE OR TWO SIPHONS AS REQUIRED.
- 2) BOTTOM KNOCKOUTS TO ACCOMODATE SIPHON 313 OR RISER FOR PEDESTAL FOR 207.
- 3) ALL SIPHON TRAPS TO BE SECURED IN CONCRETE BY CONTRACTOR ON JOB SITE.
- 4) SIPHONS, PVC FITTINGS, ADAPTERS, FERNCO RUBBER COUPLERS, AND FERNCO RUBBER COUPLERS, AND CONCRETE RISERS MUST BE PURCHASED SEPARATELY FROM TANK.

© 2004 Kistner Concrete Products, Inc.
SPECIFICATIONS ARE SUBJECT TO CHANGE WITHOUT NOTICE.