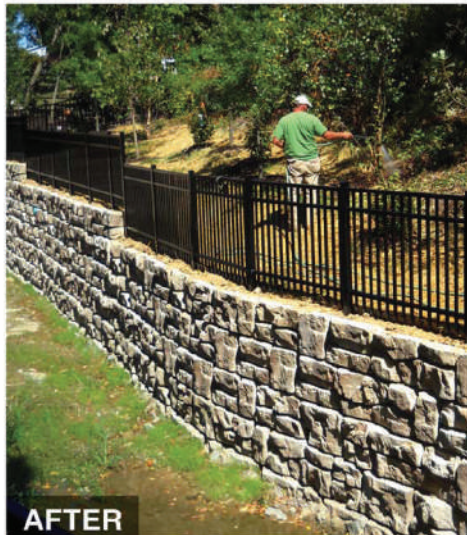




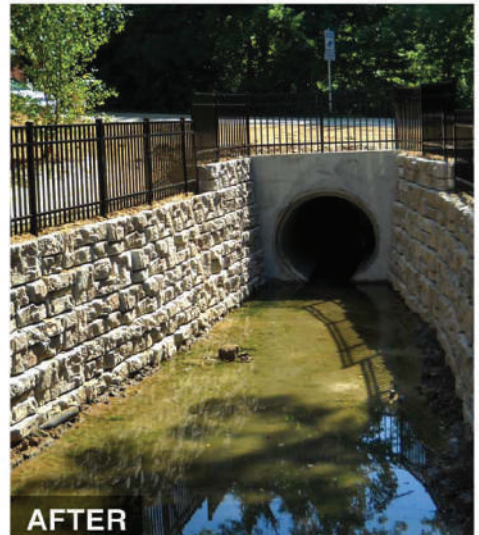
**CITY CHOOSES
REDI-ROCK LEDGESTONE
FOR AESTHETIC
GRAVITY SOLUTION**



BEFORE



AFTER



AFTER

The Challenge

When a sharp turn in a stream began eroding homeowners' yards, this city needed a solution, and fast.

The proposed storm channel required 13-14 ft. high walls, so minimizing excavation in residents' yards was important. Aesthetics and cost also played a role in the city's search for a solution.

The Solution

"The ability to construct the wall without geogrid reinforcement was critically important to

this project," explained the P.E. who designed the project. The city manager added, "We chose Redi-Rock because we had more finish options, including the new LedgeStone face. Plus, it was very economical."

Redi-Rock's massive, one-ton blocks stacked like giant Legos to harness the power of **gravity** in this project. The 13.5 ft. high walls did not require any reinforcement, which cut down on excavation time and costs considerably.

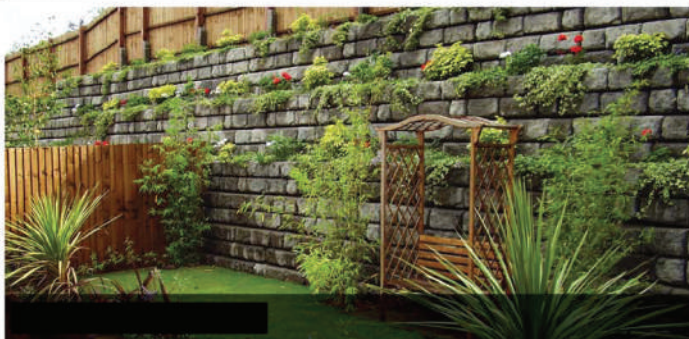
Each LedgeStone block has a random pattern which made individual blocks in the wall

nearly indistinguishable. The LedgeStone texture also blended in with the native rock in the area, and the precast concrete was colored to give the walls an incredibly **natural finish**.

In total, the 4,800 sq. ft. walls took less than two weeks to install, and the community couldn't be happier with the new storm channel.

Contact your local Redi-Rock manufacturer or visit www.redi-rock.com to learn more about the Redi-Rock LedgeStone face today!

MORE TEXTURES FROM REDI-ROCK



LIMESTONE

Call your sales representative for more information on available products and regional colors.