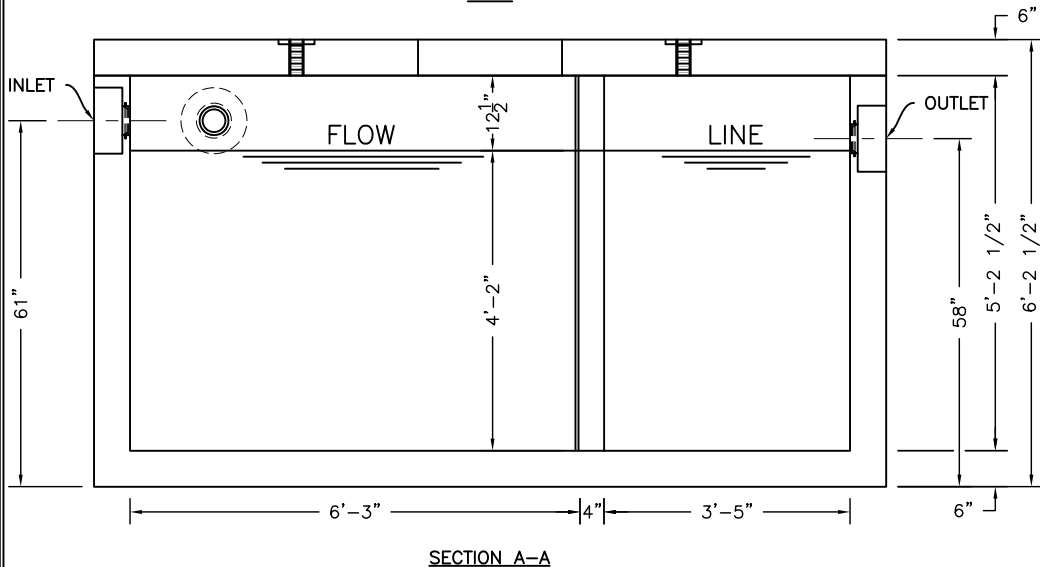
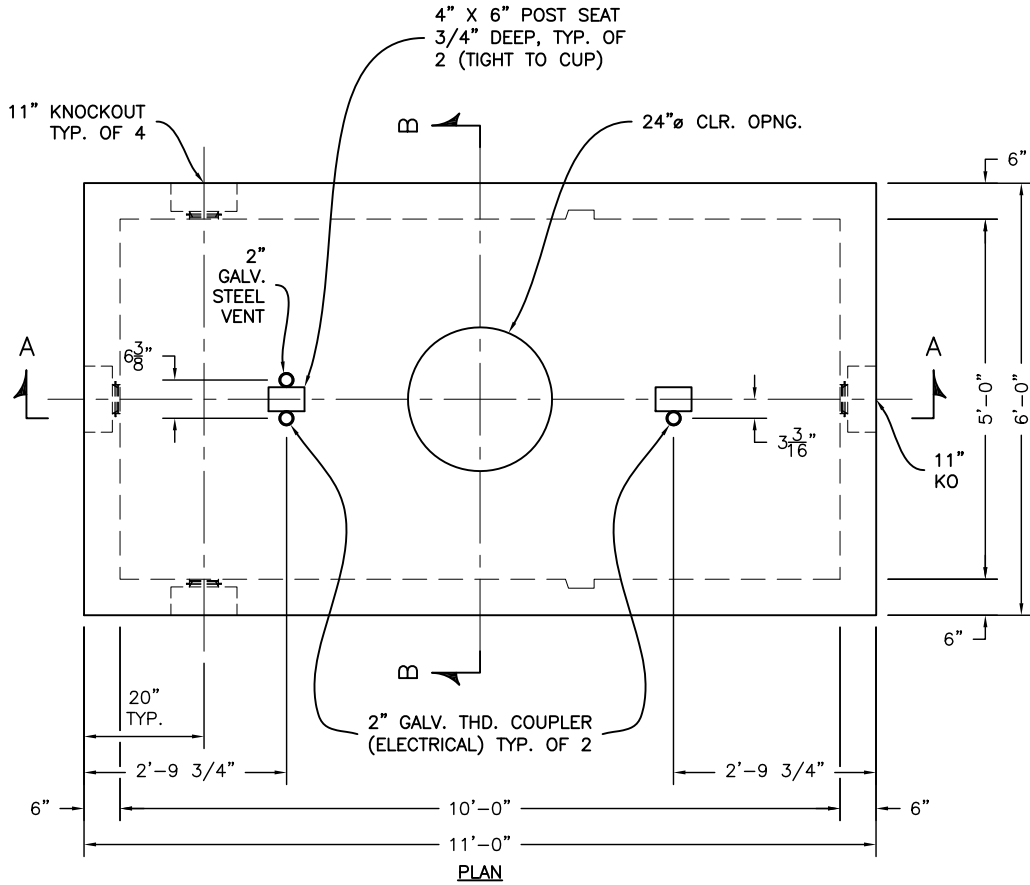


L:\CADD\PRODUCTS\024-SquareRectangular-05x10-60X120\Septic-Grease-Oil-Holding-Pump-StormPro\ST-5X10-T-N-0.dwg



**SP-7A**

**SPECIFICATIONS:**  
 CONCRETE: 6,500 P.S.I. @ 28 DAYS.  
 ENTRAINED AIR: 5% - 8%.  
 STEEL: A.S.T.M. A496-A615  
 GRADE 60-80 KSI.  
**DESIGN LOADING:** ACI 318-99 TRAFFIC. USE ACI LOAD FACTORS.  
 A.A.S.H.T.O. METHOD OF DESIGN. EQUIVALENT  
 SOIL PRESSURE OF 40 (PCF).  
**LIVE LOAD:** H20.  
**EARTH FILL:** 0 TO 6'.  
**WATER TABLE:** 3' BELOW GRADE.

**WEIGHT:**  
 TOP SLAB: 4,648 LBS.  
 BOTTOM SECTION: 17,025 LBS.  
 TOTAL: 21,673 LBS.

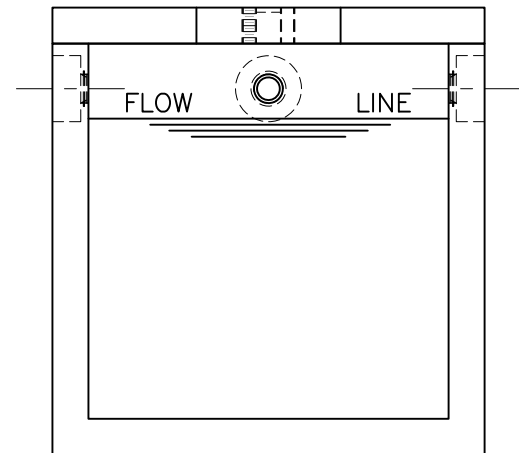
WATERTIGHT ASSEMBLY IS THE RESPONSIBILITY OF THE INSTALLING CONTRACTOR. ASK FOR KISTNER "WATERTIGHT JOINT INSTALLATION" DETAIL.

**PIPE OPENINGS STOCK:**

- PIPE SEALS REQUIRED
- 4" PVC - OPENING WITH SEAL - STOCK
- 6" PVC - OPENING STOCK - SEAL TO BE INSTALLED
- 8" PVC - OPENING STOCK - SEAL TO BE INSTALLED
- GROUTED OPENINGS ONLY - REQUIRED
- 4" PVC - OPENING WITH SEAL - STOCK
- 6" PVC - STOCK KNOCKOUT TO BE BROKEN OUT BY CONTRACTOR
- 8" PVC - STOCK KNOCKOUT TO BE BROKEN OUT BY CONTRACTOR

FOR RISER, FRAME, AND COVER: SEE "TRAFFIC TANK EXTENSIONS"

**UNIT DOES NOT HAVE  
 BAFFLE WALL**



SECTION B-B



KISTNER CONCRETE PRODUCTS INC.  
 8713 READ ROAD  
 E. PEMBROKE, N.Y.  
 14056  
 (716) 894-2267

PRODUCT DESIGNATION  
**1500 GALLON PUMP TANK**  
**TRAFFIC - NEW**

DWG. NO.  
**PT-1500-T-N-0**  
 10/17/19

