



KISTNER CONCRETE PRODUCTS INC.
8713 READ ROAD
E. PEMBROKE, N.Y.
14056
(716) 894-2267

PRODUCT DESIGNATION

6'-2" X 6'-2"
POWER/COMMUNICATION MANHOLE

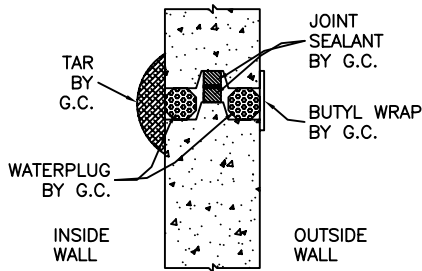
DWG. NO.

PMH-PM6262 ©
8/22/06

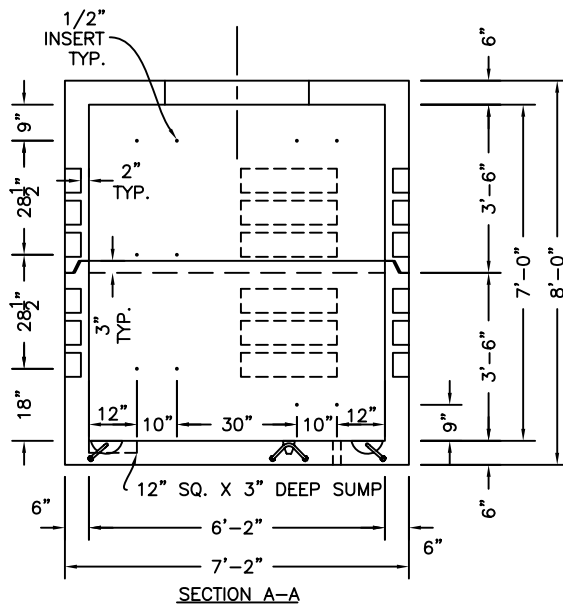
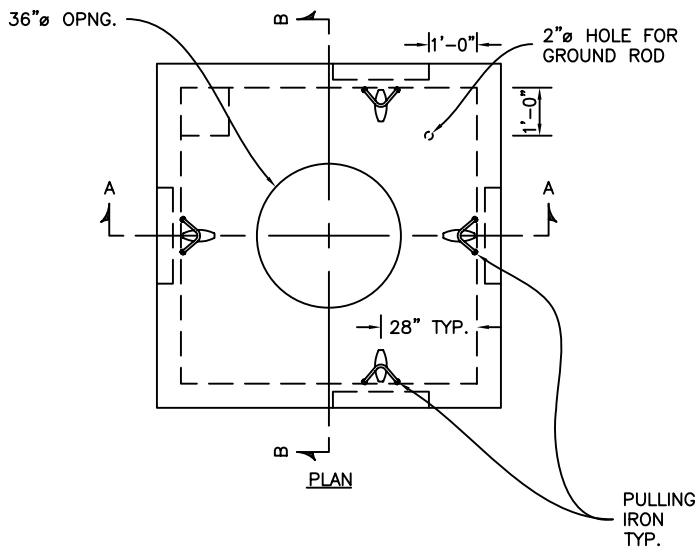
SPECIFICATIONS:

CONCRETE:	4,000 P.S.I. @ 28 DAYS.
ENTRAINED AIR:	5% - 9%.
STEEL:	A.S.T.M. A496-A615 GRADE 60-60 KSI.
DESIGN:	ACI-318.
LOADING:	A.A.S.H.T.O. HS-20-44 WITH 30% IMPACT AND EQUIVALENT SOIL DENSITY OF 120 (PCF). FLOTATION FORCES NOT ACCOUNTED FOR. WATER TABLE 3'-0" BELOW GRADE.
WEIGHT:	TOP SECTION: 10,277.77 LBS. BOTTOM SECTION: 11,336.39 LBS. TOTAL: 21,614.16 LBS.

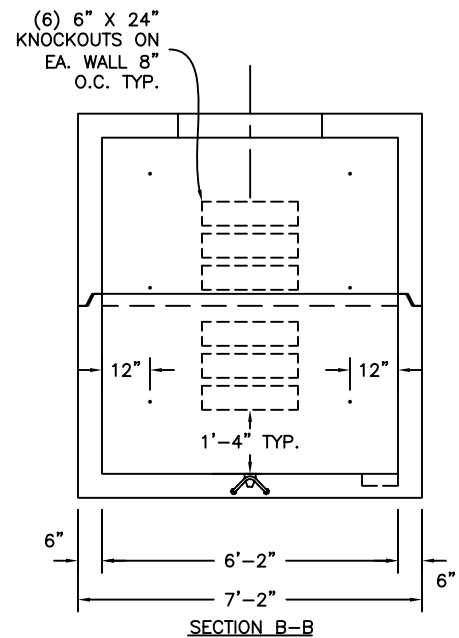
* INSERTS: 1/2" DIA. SUPPLIED & INSTALLED.



JOINT DETAIL



SECTION A-A



SECTION B-B