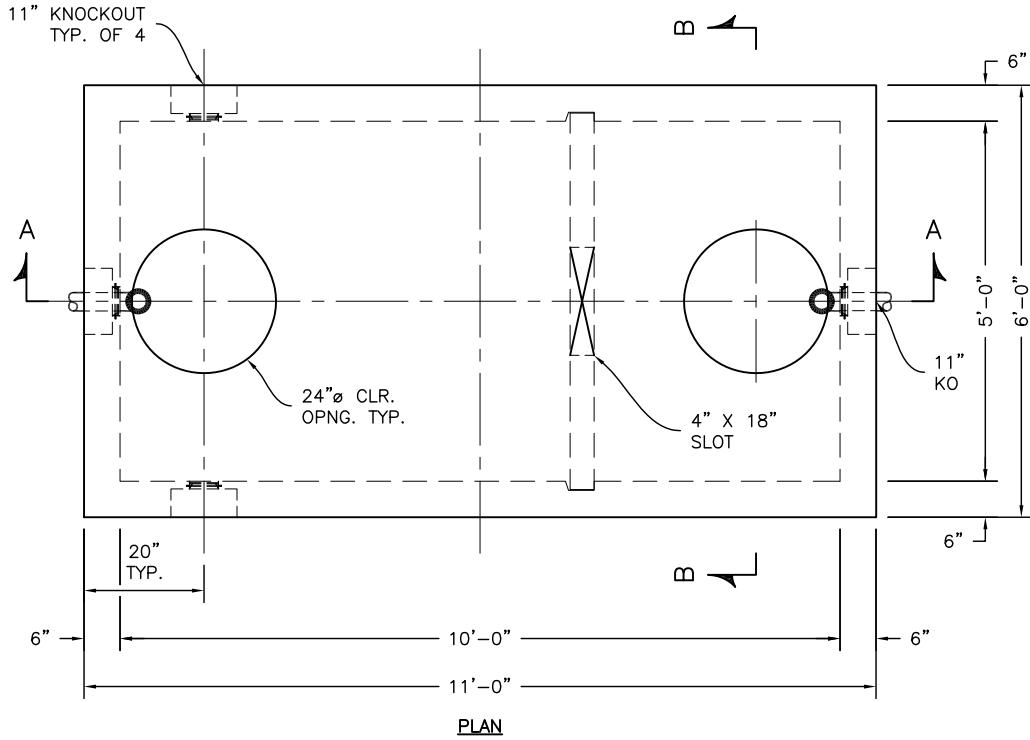
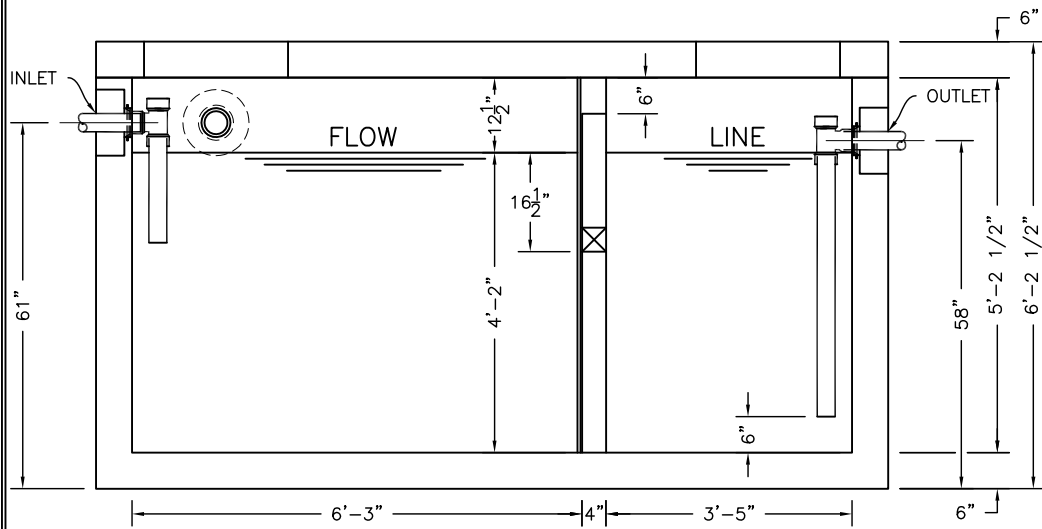


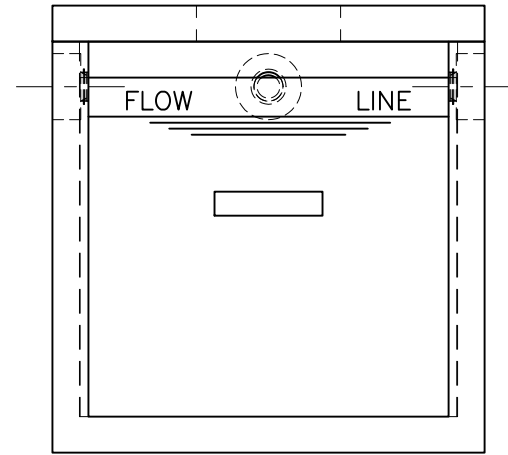
O:\Drawings\Product Workbooks\024-SquareRectangular-05x10-60X120\Septic-Grease-Oil-Holding-Pump-StormPro\ST-5X10-T-N-0.dwg



PLAN



SECTION A-A



SECTION B-B

SP-7A

SPECIFICATIONS:
 CONCRETE: 6,500 P.S.I. @ 28 DAYS.
 ENTRAINED AIR: 5% - 8%.
 STEEL: A.S.T.M. A496-A615
 GRADE 60-80 KSI.
 DESIGN LOADING: ACI 318-99 TRAFFIC. USE ACI LOAD FACTORS.
 A.A.S.H.T.O. METHOD OF DESIGN. EQUIVALENT SOIL PRESSURE OF 40 (PCF).
 LIVE LOAD: H2O.
 EARTH FILL: 0 TO 6'.
 WATER TABLE: 3' BELOW GRADE.

WEIGHT:
 TOP SLAB: 4,423 LBS.
 BOTTOM SECTION & BAFFLE WALL: 18,197 LBS.
 TOTAL: 22,620 LBS.

PIPING: TEES, DROP LEGS & FITTINGS SUPPLIED AND INSTALLED BY G.C.

WATERTIGHT ASSEMBLY IS THE RESPONSIBILITY OF THE INSTALLING CONTRACTOR. ASK FOR KISTNER "WATERTIGHT JOINT INSTALLATION" DETAIL.

PIPE OPENINGS STOCK:

- PIPE SEALS REQUIRED
- 4" PVC - OPENING WITH SEAL - STOCK
- 6" PVC - OPENING STOCK - SEAL TO BE INSTALLED
- 8" PVC - OPENING STOCK - SEAL TO BE INSTALLED
- GROUTED OPENINGS ONLY - REQUIRED
- 4" PVC - OPENING WITH SEAL - STOCK
- 6" PVC - STOCK KNOCKOUT TO BE BROKEN OUT BY CONTRACTOR
- 8" PVC - STOCK KNOCKOUT TO BE BROKEN OUT BY CONTRACTOR

FOR RISER, FRAME, AND COVER: SEE "TRAFFIC TANK EXTENSIONS"



KISTNER CONCRETE PRODUCTS INC.
 8713 READ ROAD
 E. PEMBROKE, N.Y.
 14056
 (716) 894-2267

PRODUCT DESIGNATION
1500 GALLON OIL SEPARATOR
TRAFFIC - NEW

DWG. NO.
OS-1500-T-N-0
 12/13/16