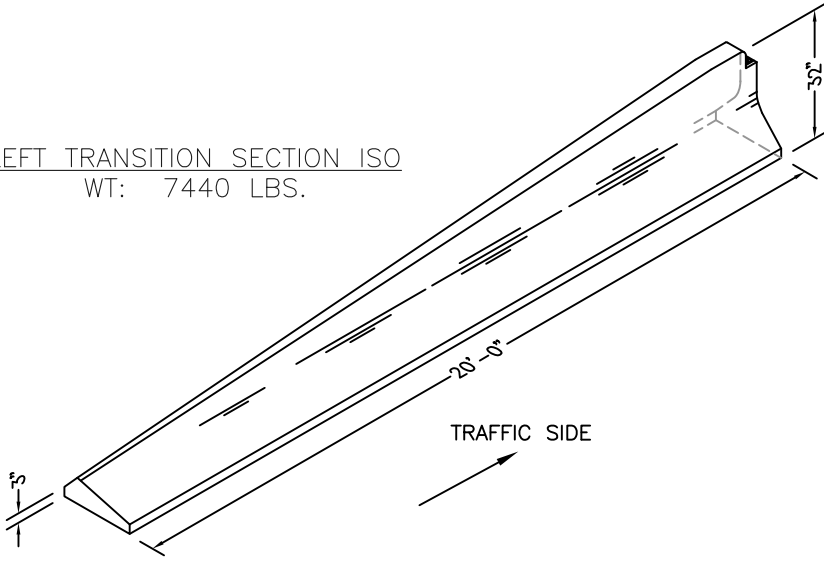
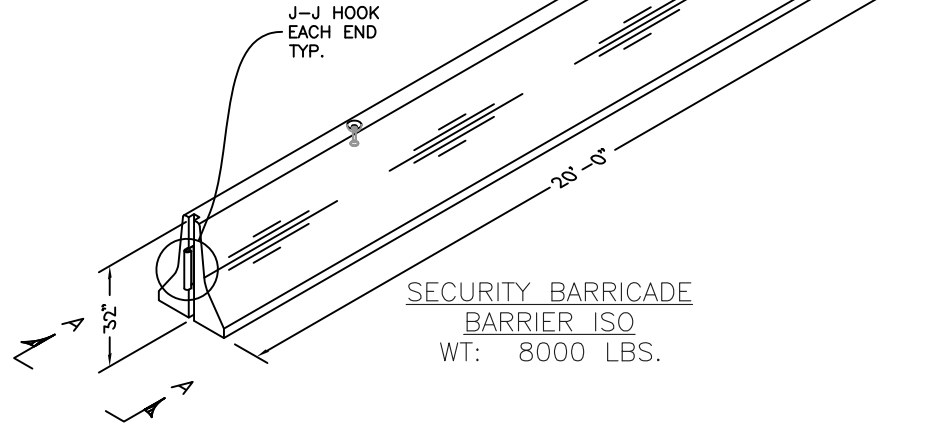
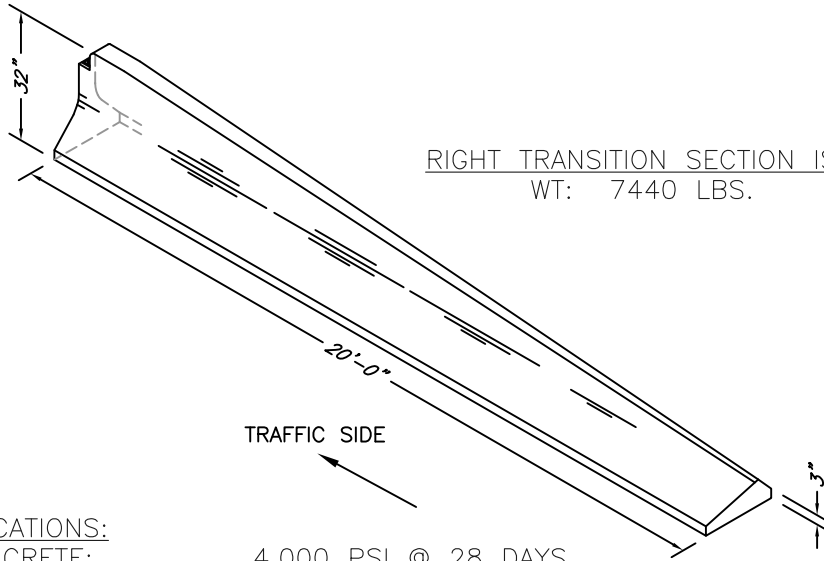


O:\Drawings\New Stuff after 2-26-10\MEDIAN BARRIERS\New Standard Sheet\NEWMBSTDSHT.dwg

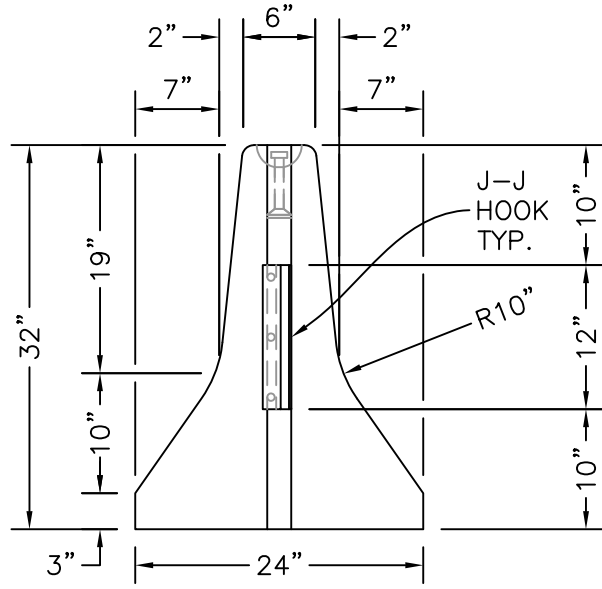
LEFT TRANSITION SECTION ISO
WT: 7440 LBS.



RIGHT TRANSITION SECTION ISO
WT: 7440 LBS.



SECURITY BARRICADE BARRIER ISO
WT: 8000 LBS.




SECTION A-A

SPECIFICATIONS:

- CONCRETE: 4,000 PSI @ 28 DAYS.
- ENTRAINED AIR: 5%-9%.
- STEEL: ASTM A496-A615 GRADE 60.
- LIFT: (2) 4TN SL PINS @ 1/3 POINTS.
- DESIGN: PER NYSDOT 619-3R3.
- SPEC: NYSDOT 704-05.
- CONNECTION: J-J HOOK - NYSDOT APPROVED.

PROPRIETARY INFORMATION - ALL RIGHTS OF KISTNER CONCRETE PRODUCTS, INC.

REVISIONS		PROJECT: NEW MEDIAN BARRIER STANDARD SHEET		
		<small>KISTNER CONCRETE PRODUCTS INC. 8713 ROAD ROAD E. HERRINGTON, N.Y. 14068 (716) 864-2387</small>	LOCATION:	
		OWNER:		
		ENGINEER:		
		CONTRACTOR:		
		MANUFACTURER:	KISTNER CONCRETE PRODUCTS, INC.	
		PRODUCT DESIGNATION:	NEW MEDIAN BARRIER STANDARD SHEET	
		SCALE: NONE	DRAWN BY: DAR	DATE: 10/1/13
		REVISED BY:	DATE:	CHECKED BY:
				MB-NEWMBSTDSHT