



KISTNER CONCRETE PRODUCTS INC.  
8713 READ ROAD  
E. PEMBROKE, N.Y.  
14056  
(716) 894-2267

PRODUCT DESIGNATION

MANHOLE 5' DIA. SANITARY

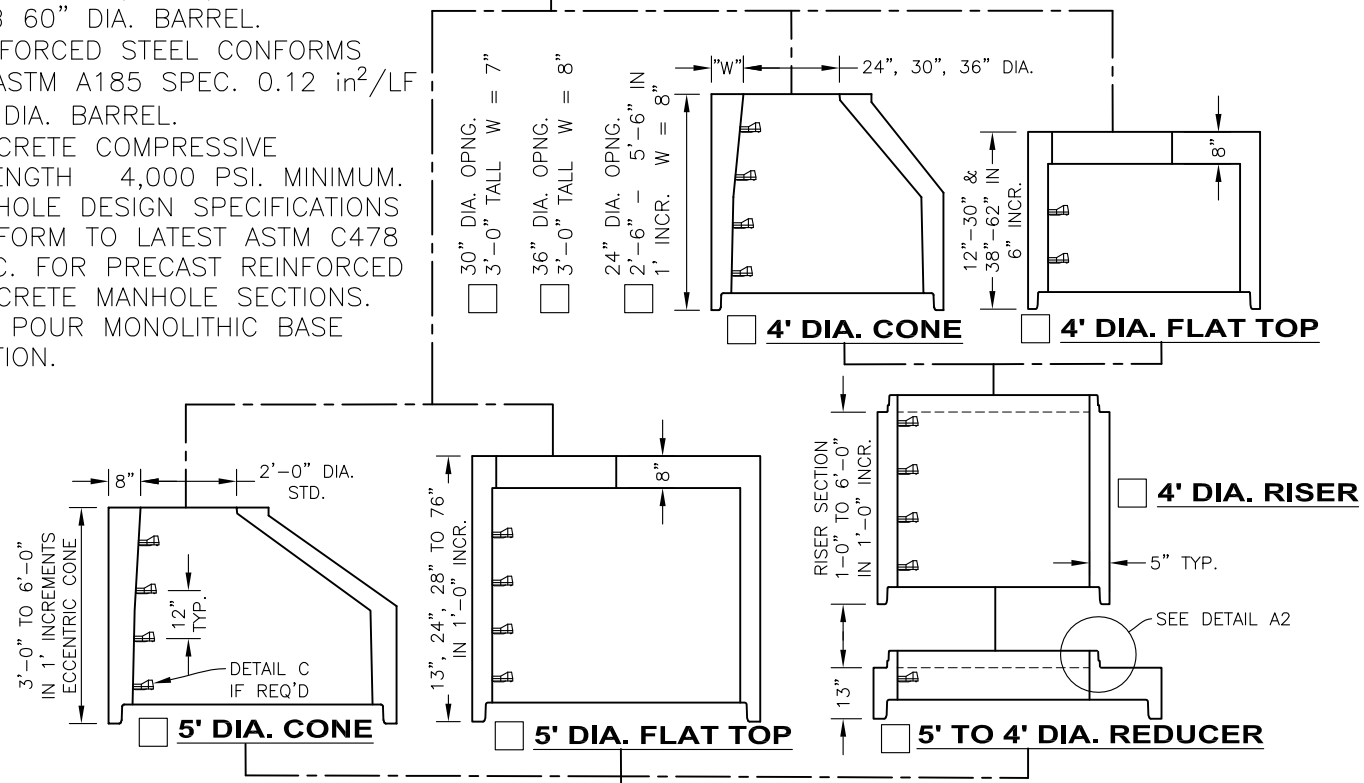
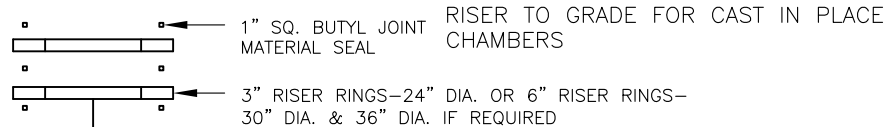
DWG. NO.

MH5SAN1 ©

5/23/12

GENERAL NOTES:

1. REINFORCED STEEL CONFORMS TO ASTM A185 SPEC. 0.15 in<sup>2</sup>/LF AND 0.15 in<sup>2</sup>/LF B/W IN BOT. SLAB 60" DIA. BARREL.
2. REINFORCED STEEL CONFORMS TO ASTM A185 SPEC. 0.12 in<sup>2</sup>/LF 48" DIA. BARREL.
3. CONCRETE COMPRESSIVE STRENGTH 4,000 PSI. MINIMUM.
4. MANHOLE DESIGN SPECIFICATIONS CONFORM TO LATEST ASTM C478 SPEC. FOR PRECAST REINFORCED CONCRETE MANHOLE SECTIONS.
5. ONE POUR MONOLITHIC BASE SECTION.



**DIMENSION FROM INVERT TO START OF CONE/REDUCER**

**BITUMASTIC COATINGS**  
(IF REQ'D) 2 COATS PER FACE

- INSIDE
- OUTSIDE
- NONE

OPTIONAL BUTYL SEALANT IN ADDITION TO O-RING. MFG. RECOMMENDATION ONLY. (5' JOINT ONLY)

FLAT TOP SLAB IS STEEL REINFORCED TO MEET OR EXCEED HS-20 LOADING.

AVAILABLE OPENINGS

- 24" DIA.
- 24" SQ.
- 30" DIA.
- \_\_\_\_\_

SEE DETAIL A1

PIPE TO MH CONNECTION DETAILS B1-B4 (SIZE TO SUIT)

VARIABLE SUMP

- 6" SUMP
- 12" SUMP
- 24" SUMP
- \_\_\_\_\_ SUMP

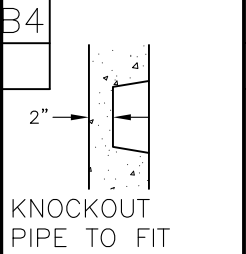
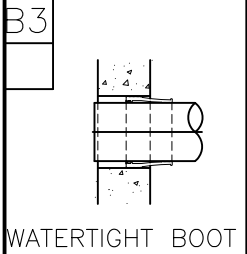
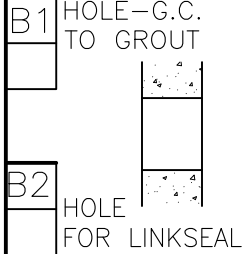
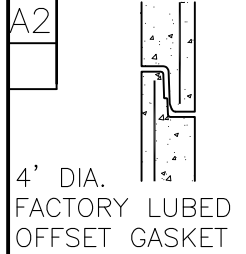
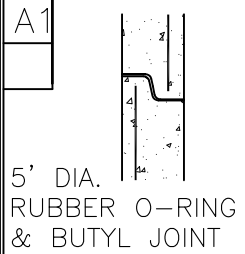
STANDARD BASE

OPTIONAL 6" FLANGE

BASE SECTION TO BE SET PER JOB SPECIFICATIONS 1 & 5

NOTE: STEEL REINFORCED COPOLYMER POLYPROPYLENE PLASTIC STEP CONFORMS TO LATEST ASTM C478 SPEC.

O-RING SECTION JOINT CONFORMS TO LATEST ASTM C443 SPEC. AND BUTYL CONFORMS TO FEDERAL SPEC. SS-S-210A.



C:\Drawings\New Stuff after 2-26-10\MANHOLES\5' DIA. MANHOLES\Types\Sanitary\Mh5san1.dwg