



KISTNER CONCRETE PRODUCTS INC.
8713 READ ROAD
E. PEMBROKE, N.Y.
14056
(716) 894-2267

PRODUCT DESIGNATION

**MANHOLE 5' DIA. SHALLOW
STORM CATCH BASIN**

DWG. NO.

MH5CB-RVL ©
5/23/12

GENERAL NOTES:

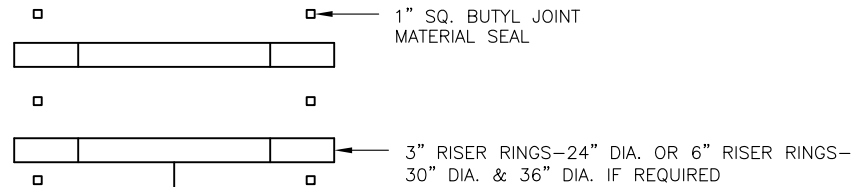
1. REINFORCED STEEL CONFORMS TO ASTM A185 SPEC. 0.15 in²/LF AND 0.15 in²/LF B/W IN BOT. SLAB 60" DIA. BARREL.
2. CONCRETE COMPRESSIVE STRENGTH 4,000 PSI. MINIMUM.
3. MANHOLE DESIGN SPECIFICATIONS CONFORM TO LATEST ASTM C478 SPEC. FOR PRECAST REINFORCED CONCRETE MANHOLE SECTIONS.
4. ONE POUR MONOLITHIC BASE SECTION.
5. DOGHOUSE:
 - H= _____
 - W= _____

**DIMENSION FROM
INVERT TO START OF
CONE _____**

BITUMASTIC COATINGS
(IF REQ'D) 2 COATS PER FACE

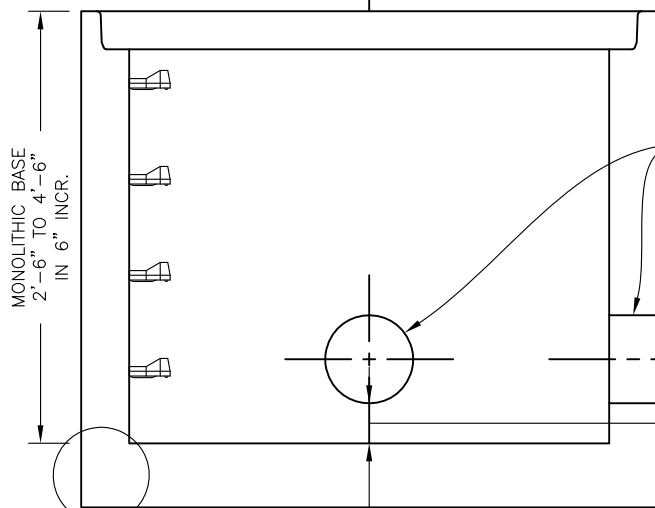
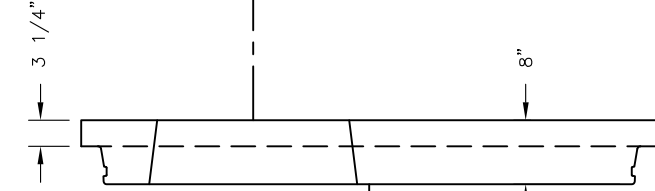
- INSIDE
- OUTSIDE
- NONE

- OPTIONAL BUTYL SEALANT IN ADDITION TO O-RING. MFG. RECOMMENDATION ONLY.



FLAT TOP SLAB IS STEEL REINFORCED TO MEET OR EXCEED HS-20 LOADING.

- AVAILABLE OPENINGS
- 24" DIA.
 - 24" SQ.
 - 30" DIA.
 - _____

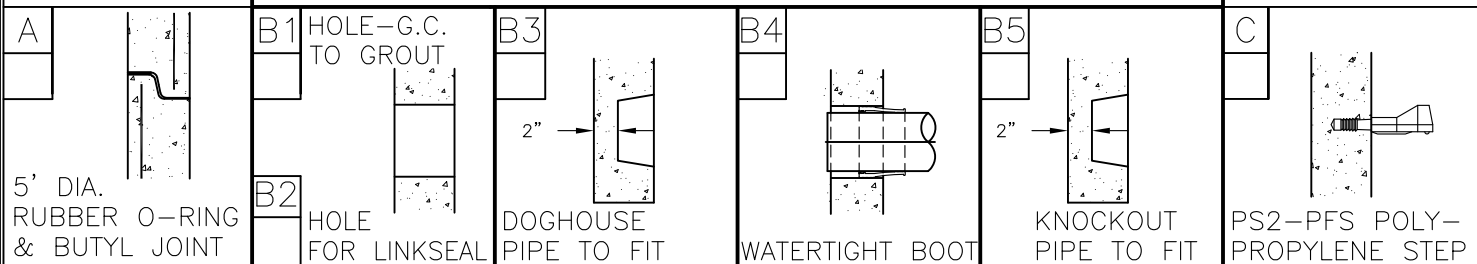


- VARIABLE SUMP
- 6" SUMP
 - 12" SUMP
 - 24" SUMP
 - _____ SUMP

- MONOLITHIC BASE**
- STANDARD BASE 8" THK.
- *OPTIONAL FLANGE - 6" WIDE
- OPTIONAL - 6" THK.
- OPTIONAL - 8" THK.

O-RING SECTION JOINT CONFORMS TO LATEST ASTM C443 SPEC.

NOTE: STEEL REINFORCED COPOLYMER POLYPROPYLENE PLASTIC STEP CONFORMS TO LATEST ASTM C478 SPEC.



O:\Drawings\New Stuff after 2-26-10\MANHOLES\5' DIA. MANHOLES\Types\Storm Catch Basin\Mh5CB-RVL.dwg