



KISTNER CONCRETE PRODUCTS INC.
8713 READ ROAD
E. PEMBROKE, N.Y.
14056
(716) 894-2267

PRODUCT DESIGNATION

**MANHOLE 4' DIA. SHALLOW
STORM CATCH BASIN**

DWG. NO.

MH4CB-RVL ©

5/23/12

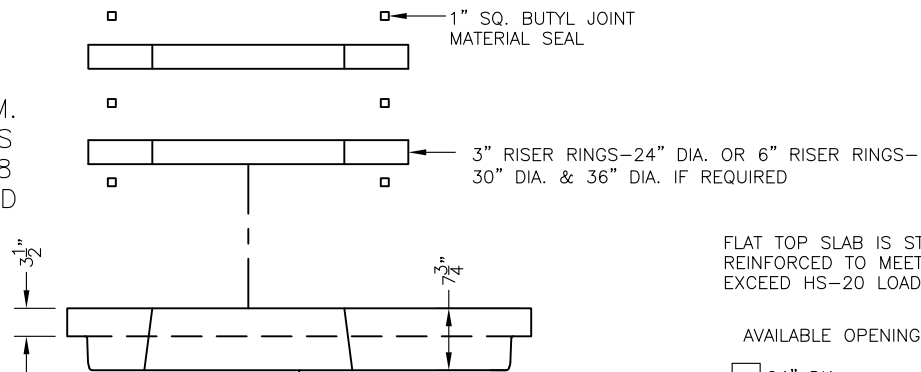
GENERAL NOTES:

1. REINFORCED STEEL CONFORMS TO ASTM A185 SPEC. 0.12 in²/LF AND 0.12 in²/LF B/W IN BOT. SLAB 48" DIA. BARREL.
2. CONCRETE COMPRESSIVE STRENGTH 4,000 PSI. MINIMUM.
3. MANHOLE DESIGN SPECIFICATIONS CONFORM TO LATEST ASTM C478 SPEC. FOR PRECAST REINFORCED CONCRETE MANHOLE SECTIONS.
4. ONE POUR MONOLITHIC BASE SECTION.
5. DOGHOUSE:
 - H = _____
 - W = _____

**DIMENSION FROM
INVERT TO START OF
CONE _____**

BITUMASTIC COATINGS
(IF REQ'D) 2 COATS PER FACE

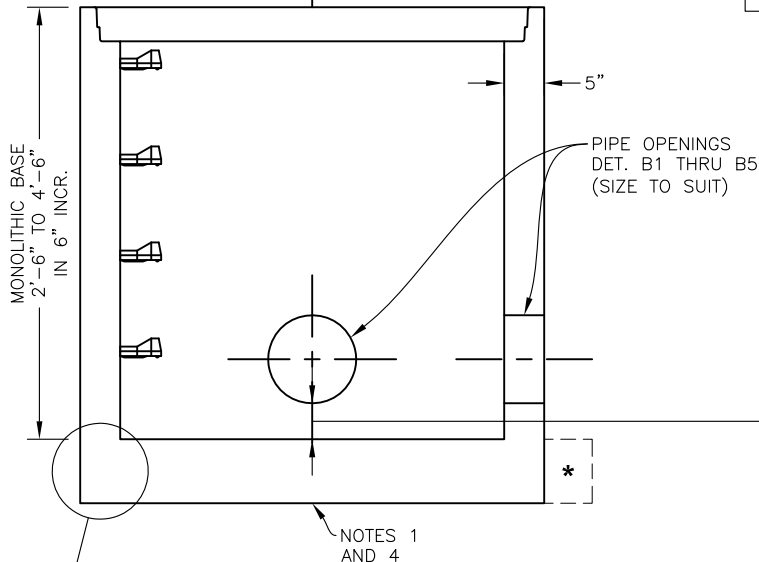
- INSIDE
- OUTSIDE
- NONE



FLAT TOP SLAB IS STEEL REINFORCED TO MEET OR EXCEED HS-20 LOADING.

AVAILABLE OPENINGS

- 24" DIA.
- 24" SQ.
- 30" DIA.
- _____



VARIABLE SUMP

- 6" SUMP
- 12" SUMP
- 24" SUMP
- " SUMP

MONOLITHIC BASE

STANDARD BASE 8" THK.

*OPTIONAL FLANGE - 6" WIDE

OPTIONAL - 6" THK.

OPTIONAL - 8" THK.

BASE SECTION TO BE SET PER JOB SPECIFICATIONS

O-RING SECTION JOINT CONFORMS TO LATEST ASTM C443 SPEC.

NOTE: STEEL REINFORCED COPOLYMER POLYPROPYLENE PLASTIC STEP CONFORMS TO LATEST ASTM C478 SPEC.

