



KISTNER CONCRETE PRODUCTS INC.
8713 READ ROAD
E. PEMBROKE, N.Y.
14056
(716) 894-2267

PRODUCT DESIGNATION

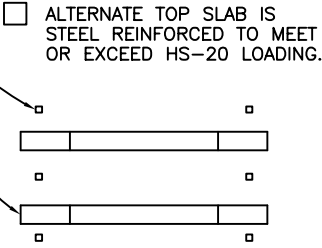
MANHOLE 4' DIA. DH.

DWG. NO.

MH-MH4DH ©
5-29-01

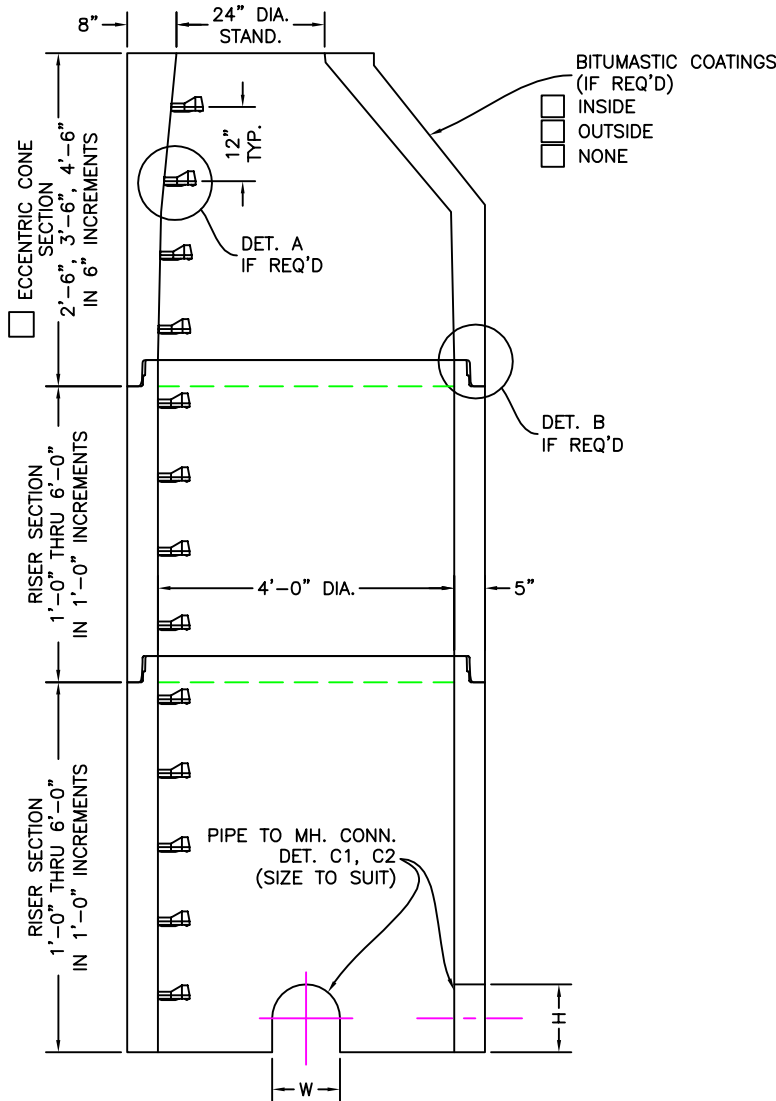
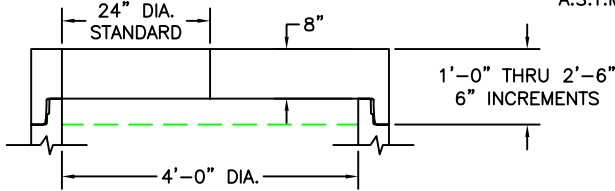
1" SQ. BUTYL JOINT MATERIAL SEAL

3" RISER RINGS AS REQUIRED



NOTE:
STEEL REINFORCED COPOLYMER POLYPROPYLENE PLASTIC STEP CONFORMS TO LATEST A.S.T.M. C478 PARA.11 SPEC.

FACTORY LUBED OFFSET GASKET JOINT CONFORMS TO LATEST A.S.T.M. C443 SPEC.



SECTION TO BE SET PER JOB SPECIFICATIONS

				A
		PS2-PFS	POLYPROPYLENE STEP	
		FACTORY LUBED OFFSET GASKET	SECTION JOINT	B
		PIPE TO MANHOLE CONNECTIONS	KNOCKOUT PIPE TO FIT	C1
		PIPE TO MANHOLE CONNECTIONS	DOGHOUSE PIPE TO FIT	C2
		PIPE TO MANHOLE CONNECTIONS	PIPE TO FIT	
		PIPE TO FIT	PIPE SIZE:	

GENERAL NOTES:

- REINFORCED STEEL CONFORMS TO LATEST A.S.T.M. A185 SPEC. 0.12 SQ. IN./LINEAL FT. AND 0.12 SQ. IN. (BOTH WAYS) IN BASE SLAB.
- CONCRETE COMPRESSIVE STRENGTH - 4000 PSI MINIMUM.
- MANHOLE DESIGN SPECIFICATIONS CONFORM TO LATEST A.S.T.M. C478 SPEC. FOR PRE-CAST REINFORCED CONCRETE MANHOLE SECTIONS.
- DOGHOUSE:

H = _____

W = _____