



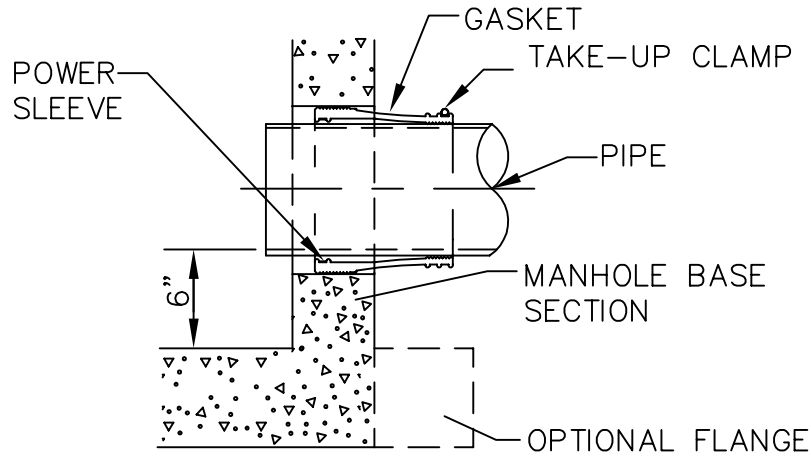
KISTNER CONCRETE PRODUCTS INC.  
8713 READ ROAD  
E. PEMBROKE, N.Y.  
14056  
(716) 894-2267

PRODUCT DESIGNATION

WATERTIGHT PIPE TO  
MANHOLE BOOT SEAL

DWG. NO.

MH-MHPSX ©  
9-8-93



SPECIFICATIONS

BOOT ADAPTABLE FOR PIPE O.D.'S OF 3"-51"  
ASSEMBLY COMPONENTS MEET AND/OR EXCEED ALL MATERIAL SPECIFICATIONS OF ASTM C-923

**GASKET:**

MINIMUM THICKNESS OF GASKET MATERIAL	
PSX 8" HOLES THRU 16" HOLE SIZES	.290" ± .025
PSX-2 18" HOLES AND LARGER HOLE SIZES	.300" ± .025
MINIMUM COMPOUND TENSILE STRENGTH OF RUBBER	1800 PSI
ELONGATION OF RUBBER	450%-550%
SHORE A DUROMETER OF RUBBER	42 + 5
RUBBER COMPOUND MEETS AND/OR EXCEEDS ASTM C-923 REQUIREMENTS.	

**POWER SLEEVE:**

TYPE 304 STAINLESS STEEL	
TENSILE STRENGTH OF STEEL	85,000 PSI
YIELD STRENGTH OF STEEL	35,000PSI
8" THRU 26" HOLE SIZES	1.5" WIDE 11 GAUGE
28" HOLE SIZES AND LARGER	1.5" WIDE 10 GAUGE
POWER SLEEVE STAINLESS STEEL MEETS AND/OR EXCEEDS ALL ASTM C-923 REQUIREMENTS.	

**TAKE-UP CLAMPS:**

ALL STAINLESS STEEL CLAMP BAND, SADDLE AND HOUSING MADE OF TYPE 302 SCREW MADE OF TYPE 305 STAINLESS STEEL STAINLESS STEEL TAKE-UP CLAMPS MEET AND/OR EXCEED ALL ASTM C-923 REQUIREMENTS.

FOR PIPES WITH O.D.'S. LESS THAN 14.5" (PSX), A SINGLE CLAMP IS STANDARD; (PSX-2) DOUBLE CLAMPS IS OPTIONAL. FOR PIPES WITH O.D.'S. LARGER THAN 14.5" DOUBLE CLAMPS (PSX-2) IS STANDARD. FOR PROPER CLAMP SIZING SEE PSX CLAMP ACCOMMODATION CHART.

**SUPPLIED BY:** PRESS SEAL GASKET CORPORATION, 6935 LINCOLN PARKWAY. FORT WAYNE, IN., 46804  
PHONE: (800) 348-7325 OR (219) 436-0521  
FAX: (219) 436-1908 (OR EQUAL)

- PIPE INSTALLATION:**
1. AFTER MANHOLE HAS BEEN SET TO GRADE, INSPECT AND CLEAN OUT INSIDE OF CONNECTOR. CLEAN SURFACE OF PIPE BARREL TO BE INSTALLED.
  2. INSERT PIPE INTO CONNECTOR UNTIL END OF PIPE BREAKS INSIDE PLANE OF MANHOLE WALL. POSITION PIPE IN CENTER OF CONNECTOR.
  3. INSTALL TAKE-UP CLAMP(S) IN GROOVE(S) AT PIPE RECEIVING END OF GASKET. CHECK AGAIN TO MAKE SURE INTERIOR OF CONNECTOR AND PIPE BARREL SURFACES ARE CLEAN.
  4. TIGHTEN TAKE-UP CLAMP(S) WITH RATCHET OR TORQUE WRENCH TO 60 IN./LBS. TORQUE.
  5. ADJUST PIPE TO LINE AND GRADE. USE PROPER BEDDING, BACKFILL MATERIALS AND TECHNIQUES.
  6. ANY PIPE STUBS INSTALLED IN THE MANHOLE MUST BE RESTRAINED FROM MOVEMENT.