



KISTNER CONCRETE PRODUCTS INC.
8713 READ ROAD
E. PEMBROKE, N.Y. 14056
(716) 894-2267

PRODUCT DESIGNATION

MANHOLE 8' DIA. STORM

DWG. NO.

MH8ST



5/23/12

GENERAL NOTES:

1. REINFORCED STEEL CONFORMS TO ASTM A185 SPEC. 0.24 in²/LF AND 0.24 in²/LF B/W IN BOT. SLAB 96" DIA. BARREL.
2. REINFORCED STEEL CONFORMS TO ASTM A185 SPEC. 0.12 in²/LF 48" DIA. BARREL.
3. CONCRETE COMPRESSIVE STRENGTH 4,000 PSL. MINIMUM.
4. MANHOLE DESIGN SPECIFICATIONS CONFORM TO LATEST ASTM C478 SPEC. FOR PRECAST REINFORCED CONCRETE MANHOLE SECTIONS.

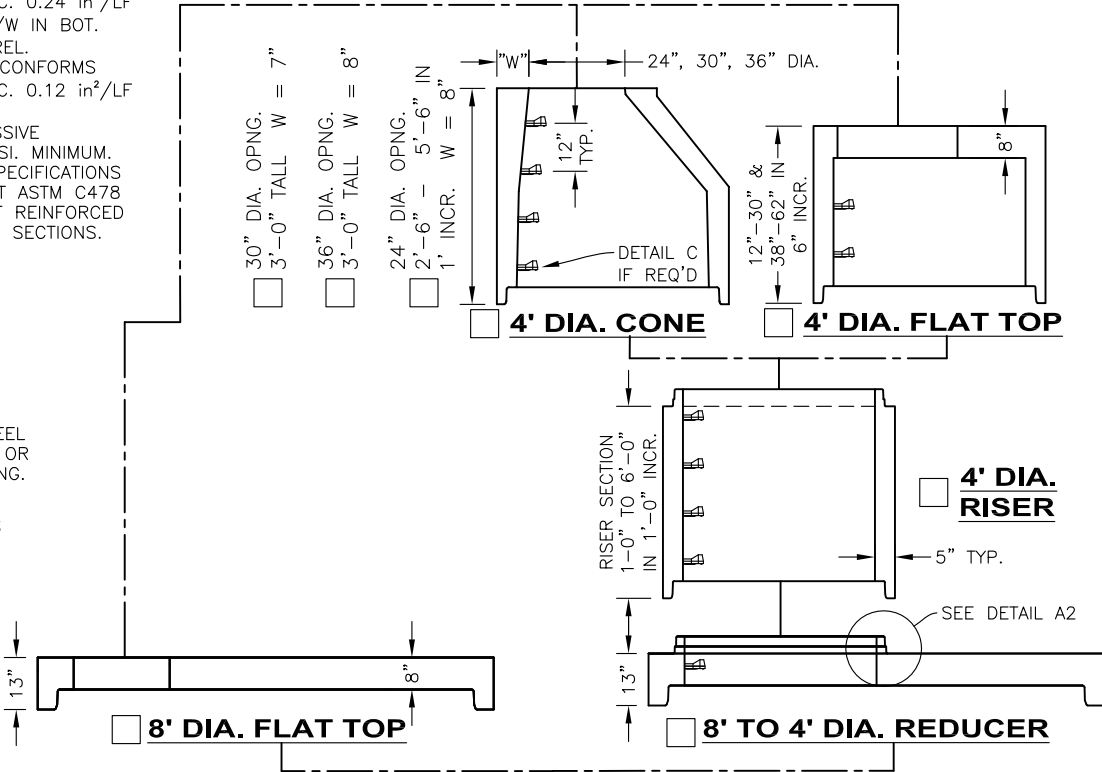
1" SQ. BUTYL JOINT MATERIAL SEAL

3" RISER RINGS-24" DIA. OR 6" RISER RINGS-30" DIA. & 36" DIA. IF REQUIRED

FLAT TOP SLAB IS STEEL REINFORCED TO MEET OR EXCEED HS-20 LOADING.

AVAILABLE OPENINGS

- 24" DIA.
- 24" SQ.
- 30" DIA.
- _____



DIMENSION FROM INVERT TO START OF CONE/REDUCER

BITUMASTIC COATINGS

(IF REQ'D) 2 COATS PER FACE

- INSIDE
- OUTSIDE
- NONE
- OPTIONAL BUTYL SEALANT IN ADDITION TO O-RING. MFG. RECOMMENDATION ONLY. (8' JOINT ONLY)

O-RING SECTION JOINT CONFORMS TO LATEST ASTM C443 SPEC. AND BUTYL CONFORMS TO FEDERAL SPEC. SS-S-210A.

STANDARD BASE

BASE SECTION TO BE SET PER JOB SPECIFICATIONS

OPTIONAL 6" FLANGE

SEE NOTE 1

VARIABLE SUMP

- 6" SUMP
- 12" SUMP
- 24" SUMP
- _____ SUMP

NOTE: STEEL REINFORCED COPOLYMER POLYPROPYLENE PLASTIC STEP CONFORMS TO LATEST ASTM C478 SPEC.

