



KISTNER CONCRETE PRODUCTS INC.
8713 READ ROAD
E. PEMBROKE, N.Y.
14056
(716) 894-2267

PRODUCT DESIGNATION
MANHOLE 6' DIA. STORM MANHOLE
WITH TALL FLAT TOP OPTION

DWG. NO.
MH6STWTF ©
5/23/12

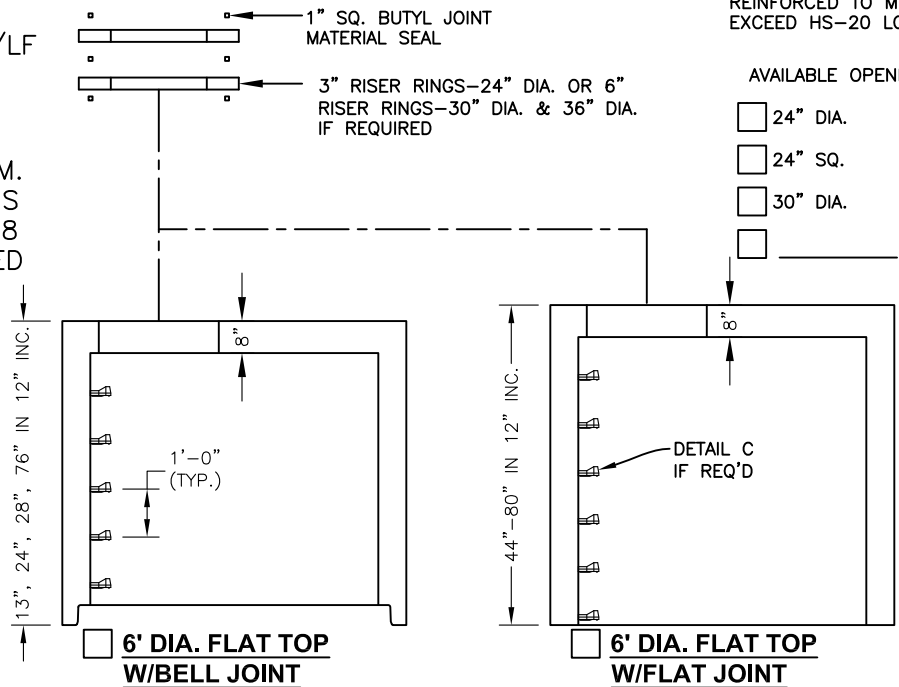
GENERAL NOTES:

1. REINFORCED STEEL CONFORMS TO ASTM A185 SPEC. 0.18 in²/LF AND 0.18 in²/LF B/W IN BOT. SLAB.
2. CONCRETE COMPRESSIVE STRENGTH 4,000 PSI. MINIMUM.
3. MANHOLE DESIGN SPECIFICATIONS CONFORM TO LATEST ASTM C478 SPEC. FOR PRECAST REINFORCED CONCRETE MANHOLE SECTIONS.
4. DOGHOUSE:
H = _____
W = _____

FLAT TOP SLAB IS STEEL REINFORCED TO MEET OR EXCEED HS-20 LOADING.

AVAILABLE OPENINGS

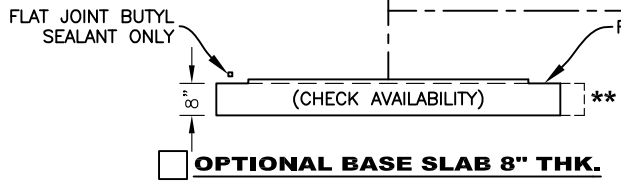
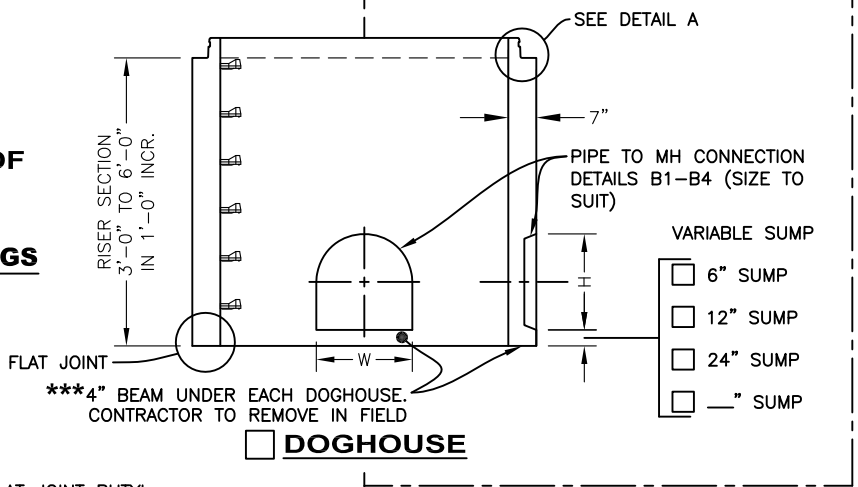
- 24" DIA.
- 24" SQ.
- 30" DIA.
- _____



DIMENSION FROM INVERT TO START OF CONE/REDUCER

BITUMASTIC COATINGS
(IF REQ'D) 2 COATS PER FACE

- INSIDE
- OUTSIDE
- NONE



O-RING SECTION JOINT CONFORMS TO LATEST ASTM C443 SPEC.

NOTE: STEEL REINFORCED COPOLYMER POLYPROPYLENE PLASTIC STEP CONFORMS TO LATEST ASTM C478 SPEC.

<p>A</p> <p>6' DIA. RUBBER O-RING & BUTYL JOINT</p>	<p>B1 HOLE-G.C. TO GROUT</p> <p>B2 HOLE FOR LINKSEAL</p>	<p>B3</p> <p>DOGHOUSE PIPE TO FIT</p>	<p>B4</p> <p>WATERTIGHT BOOT</p>	<p>B5</p> <p>KNOCKOUT PIPE TO FIT</p>	<p>C</p> <p>PS2-PFS POLYPROPYLENE STEP</p>
--	--	--	---	--	---