



KISTNER CONCRETE PRODUCTS INC.  
8713 READ ROAD  
E. PEMBROKE, N.Y.  
14056  
(716) 894-2267

PRODUCT DESIGNATION

MANHOLE 6' DIA. SANITARY

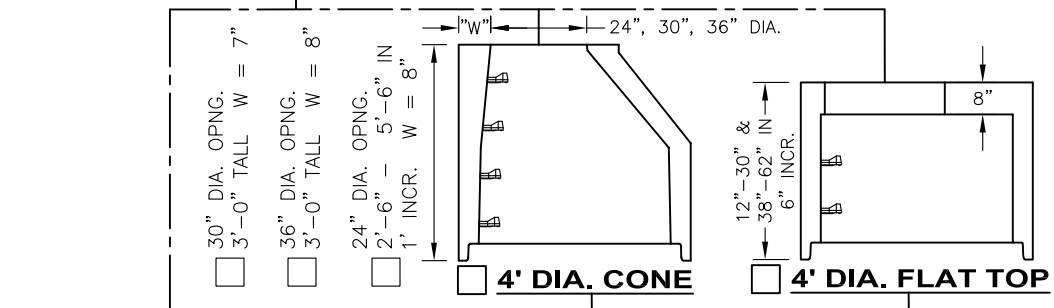
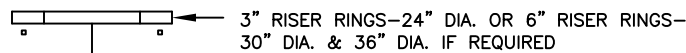
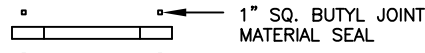
DWG. NO.

MH6SAN

5/23/12

GENERAL NOTES:

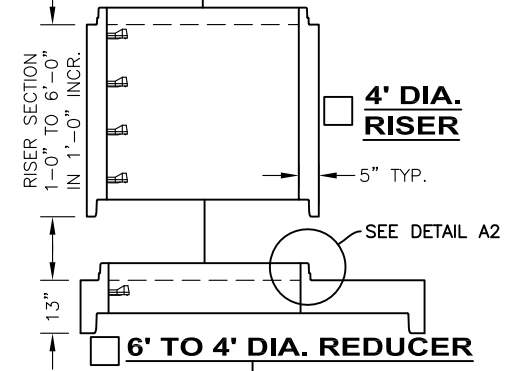
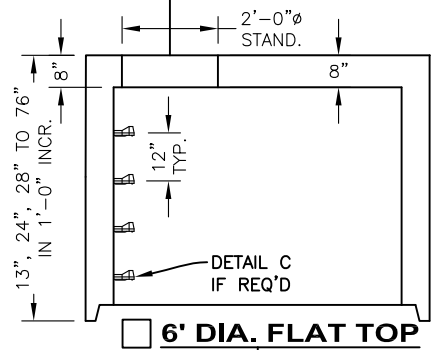
1. REINFORCED STEEL CONFORMS TO ASTM A185 SPEC. 0.18 in<sup>2</sup>/LF AND 0.18 in<sup>2</sup>/LF B/W IN BOT. SLAB 72" DIA. BARREL.
2. REINFORCED STEEL CONFORMS TO ASTM A185 SPEC. 0.12 in<sup>2</sup>/LF 48" DIA. BARREL.
3. CONCRETE COMPRESSIVE STRENGTH 4,000 PSI. MINIMUM.
4. MANHOLE DESIGN SPECIFICATIONS CONFORM TO LATEST ASTM C478 SPEC. FOR PRECAST REINFORCED CONCRETE MANHOLE SECTIONS.
5. ONE POUR MONOLITHIC BASE SECTION.



FLAT TOP SLAB IS STEEL REINFORCED TO MEET OR EXCEED HS-20 LOADING.

AVAILABLE OPENINGS

- 24" DIA.
- 24" SQ.
- 30" DIA.
- \_\_\_\_\_

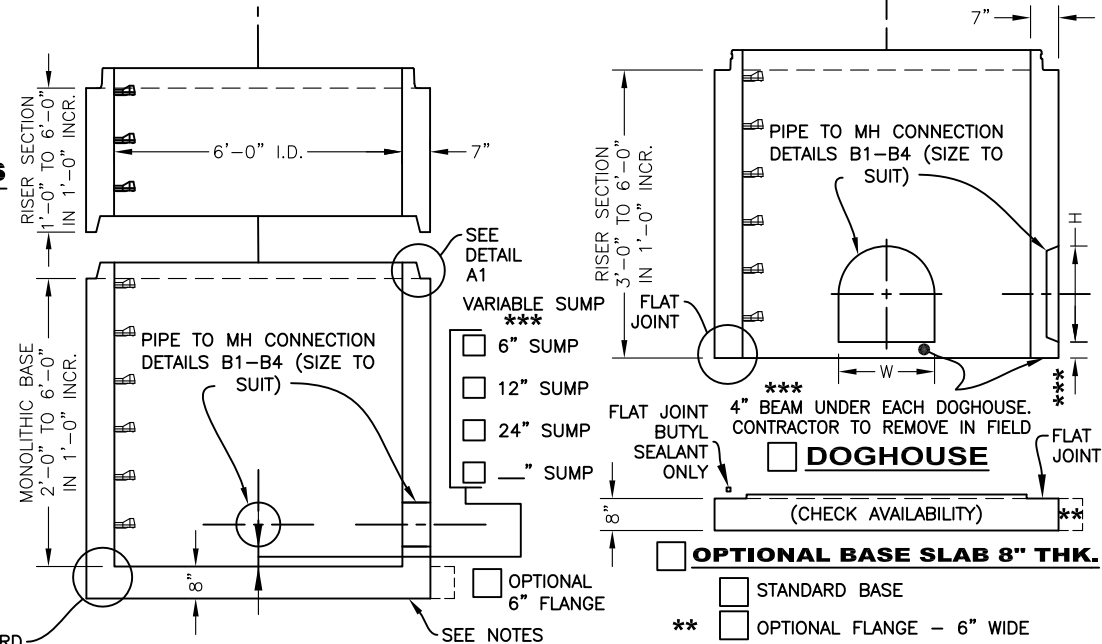


DIMENSION FROM INVERT TO START OF CONE/REDUCER

BITUMASTIC COATINGS (IF REQ'D) 2 COATS PER FACE

- INSIDE
- OUTSIDE
- NONE

OPTIONAL BUTYL SEALANT IN ADDITION TO O-RING. MFG. RECOMMENDATION ONLY. (6' JOINT ONLY)



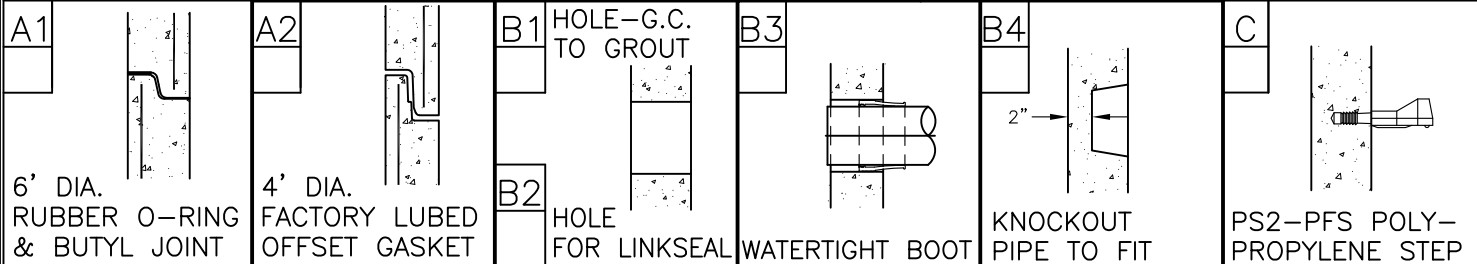
O-RING SECTION JOINT CONFORMS TO LATEST ASTM C443 SPEC. AND BUTYL CONFORMS TO FEDERAL SPEC. SS-S-210A.

STANDARD BASE

BASE SECTION TO BE SET PER JOB SPECIFICATIONS

SEE NOTES 1 & 5

NOTE: STEEL REINFORCED COPOLYMER POLYPROPYLENE PLASTIC STEP CONFORMS TO LATEST ASTM C478 SPEC.



A1  
6' DIA. RUBBER O-RING & BUTYL JOINT

A2  
4' DIA. FACTORY LUBED OFFSET GASKET

B1  
HOLE-G.C. TO GROUT

B2  
HOLE FOR LINKSEAL

B3  
WATERTIGHT BOOT

B4  
KNOCKOUT PIPE TO FIT

C  
PS2-PFS POLY-PROPYLENE STEP

C:\Drawings\New Stuff after 2-26-10\MANHOLES\6' DIA. MANHOLES\Types\Sanitary\MH6SAN.DWG