



KISTNER CONCRETE PRODUCTS INC.
8713 READ ROAD
E. PEMBROKE, N.Y.
14056
(716) 894-2267

PRODUCT DESIGNATION

MANHOLE 5' DIA. DOG HOUSE

DWG. NO.

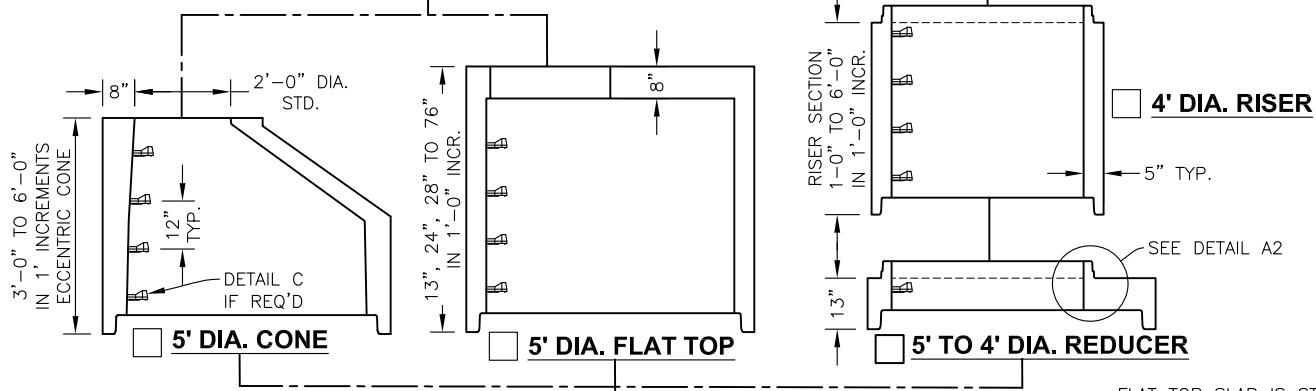
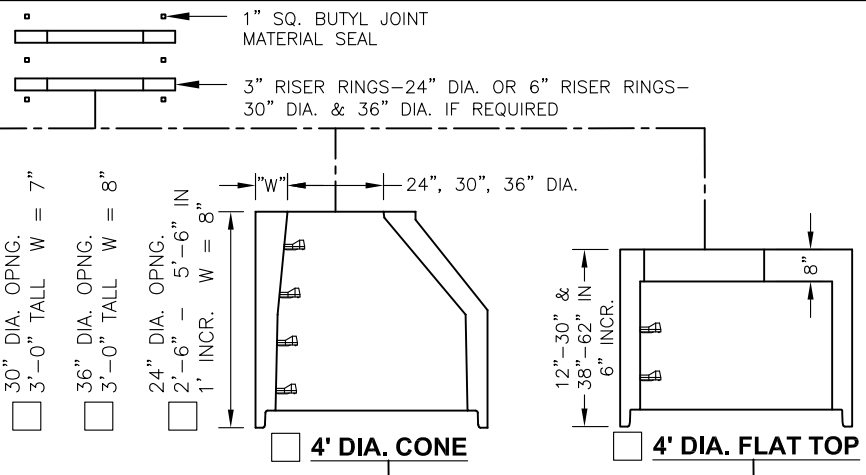
MH5DH

5/23/12

GENERAL NOTES:

1. REINFORCED STEEL CONFORMS TO ASTM A185 SPEC. 0.15 in²/LF AND 0.15 in²/LF B/W IN BOT. SLAB 60" DIA. BARREL.
2. REINFORCED STEEL CONFORMS TO ASTM A185 SPEC. 0.12 in²/LF 48" DIA. BARREL.
3. CONCRETE COMPRESSIVE STRENGTH 4,000 PSI. MINIMUM.
4. MANHOLE DESIGN SPECIFICATIONS CONFORM TO LATEST ASTM C478 SPEC. FOR PRECAST REINFORCED CONCRETE MANHOLE SECTIONS.
5. DOGHOUSE:

H= _____
W= _____



DIMENSION FROM INVERT TO START OF CONE/REDUCER

BITUMASTIC COATINGS
(IF REQ'D) 2 COATS PER FACE

- INSIDE
- OUTSIDE
- NONE

OPTIONAL BUTYL SEALANT IN ADDITION TO O-RING. MFG. RECOMMENDATION ONLY. (5' JOINT ONLY)

FLAT TOP SLAB IS STEEL REINFORCED TO MEET OR EXCEED HS-20 LOADING.

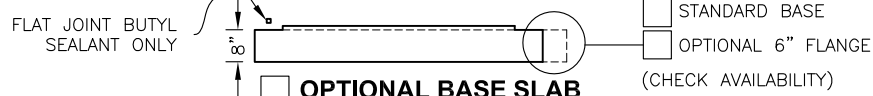
AVAILABLE OPENINGS

- 24" DIA.
- 24" SQ.
- 30" DIA.
- _____

VARIABLE SUMP

- 6" SUMP
- 12" SUMP
- 24" SUMP
- _____ SUMP

***4" BEAM UNDER EACH DOGHOUSE. CONTRACTOR TO REMOVE IN FIELD



O-RING SECTION JOINT CONFORMS TO LATEST ASTM C443 SPEC. AND BUTYL CONFORMS TO FEDERAL SPEC. SS-S-210A.

NOTE: STEEL REINFORCED COPOLYMER POLYPROPYLENE PLASTIC STEP CONFORMS TO LATEST ASTM C478 SPEC.

<p>A1</p> <p>5' DIA. RUBBER O-RING & BUTYL JOINT</p>	<p>A2</p> <p>4' DIA. FACTORY LUBED OFFSET GASKET</p>	<p>B1</p> <p>HOLE-G.C. TO GROUT</p> <p>B2</p> <p>HOLE FOR LINKSEAL</p>	<p>B3</p> <p>WATERTIGHT BOOT</p>	<p>B4</p> <p>2"</p> <p>KNOCKOUT PIPE TO FIT</p>	<p>C</p> <p>PS2-PFS POLY-PROPYLENE STEP</p>
--	--	--	----------------------------------	---	---

C:\Drawings\New Stuff after 2-26-10\MANHOLES\5' DIA. MANHOLES\Types\Doghouse\MH5DH.dwg