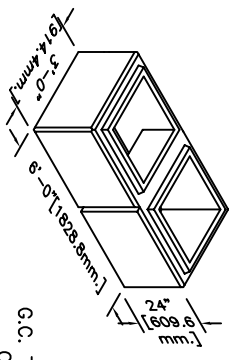


PRECAST WINGWALL, HEADWALL, CUTOFF WALL & FOOTER SOLUTION



**PATENT
PENDING**

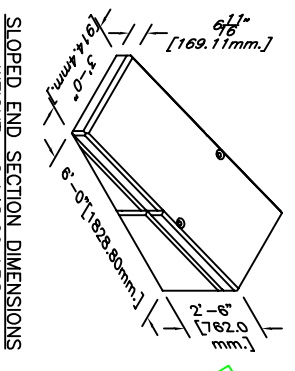


TYPICAL BLOCK DIMENSIONS

BLOCK INTERNAL VOLUME:
22.13 CUB. FT.
(971,385 cub. mm.)

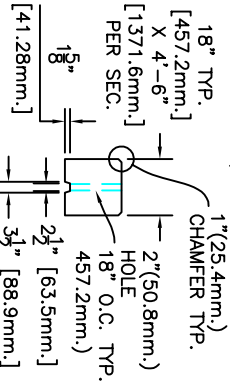
WEIGHT: 2,332.88 LBS.

G.C. TO FILL OPEN CELLS OF KAST BLOCK WITH CONTROLLED DENSITY FILL. 3000 P.S.I. MIN.

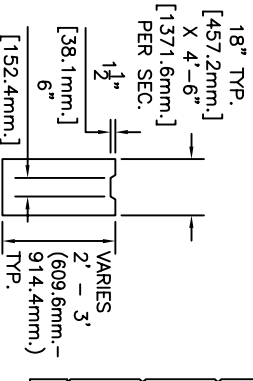


SLOPED END SECTION DIMENSIONS

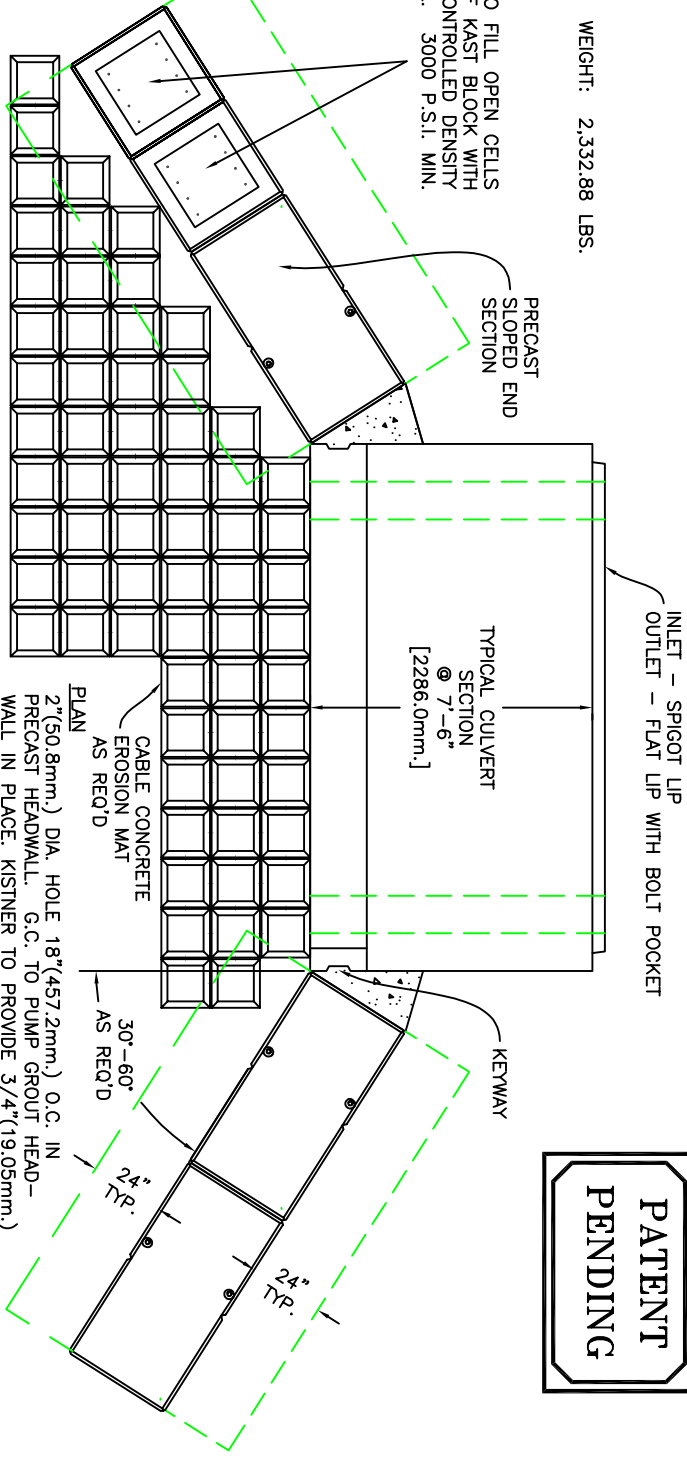
WEIGHT: 2,148.09 LBS.



HEADER SECTION



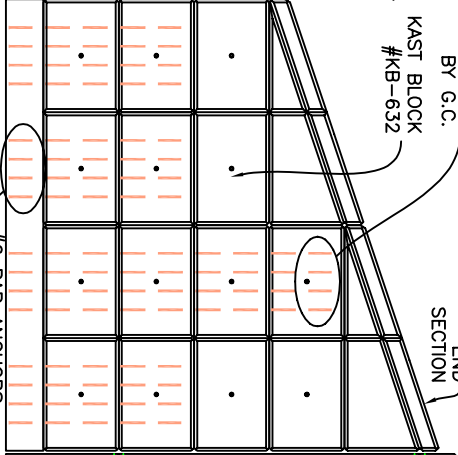
CUT OFF WALL SECTION



ADD'L REINF. BY G.C.

KAST BLOCK #KB-632

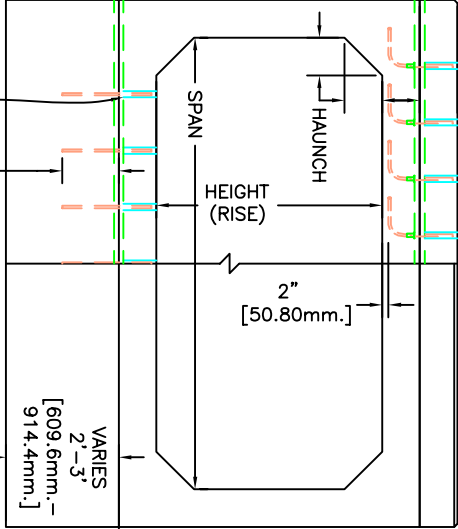
SLOPED END SECTION



#6 BAR ANCHORS # AS REQ'D PER CELL TYP.

PRECAST FOOTER - SIZE AS REQ'D

PLAN
2" (50.8mm.) DIA. HOLE 18" (457.2mm.) O.C. IN PRECAST HEADWALL. G.C. TO PUMP GROUT HEADWALL IN PLACE. KISTNER TO PROVIDE 3/4" (19.05mm.) DOWELS AND DAYTON #D-50 DBR COUPLERS 24(609.6mm.) LONG PLUS 3/4"-10NC(19.05mm.-10NC) THREAD. EPOXY COATED PER N.Y.S.D.O.T. SPEC. 709-110



VARIES 2'-3' [609.6mm.-914.4mm.]

2" (50.8mm.) DIA. HOLE 18" (457.2mm.) O.C. IN PRECAST BOX CULVERT. G.C. TO DRILL INTO PRECAST CUT OFF WALL & PIN WITH 3/4" (19.05mm.) EPOXY DOWEL AND GROUT INTO PRECAST CUT OFF WALL. PIN BY G.C.

FRONT VIEW

(WING WALLS REVOLVED PERPENDICULAR TO CULVERT FOR CLARITY)

PRECAST HEADWALL, WINGWALL CUTOFF WALL & FOOTER SOLUTION