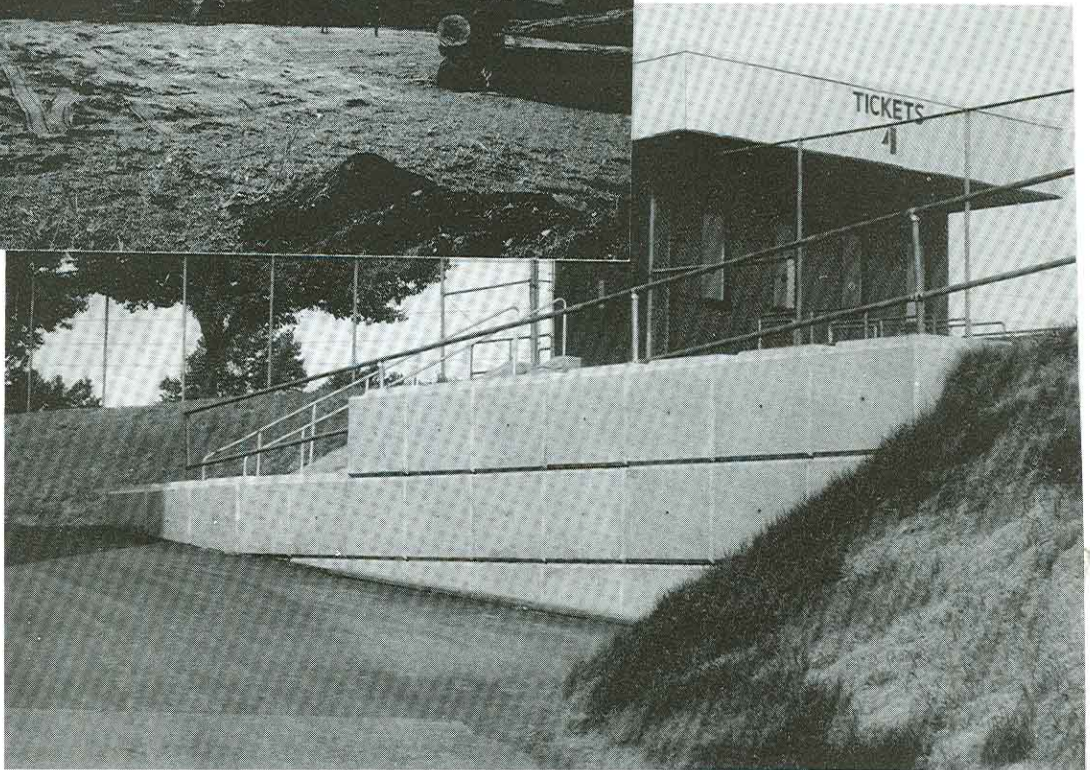


KAST BLOCKS

RETAINING WALL SYSTEM



PRECAST CONCRETE PRE-ENGINEERED RETAINING WALL SYSTEM BY:



KISTNER CONCRETE PRODUCTS, INC.
8713 READ ROAD
EAST PEMBROKE, NEW YORK 14056-0218
BUFFALO LINE: 716/894-2267
E. PEMBROKE LINE: 716/762-8216
FAX: 716/762-8315

KAST BLOCKS

RETAINING WALL SYSTEM

WHAT IS IT:

KAST BLOCK IS A PRECAST CONCRETE INTERLOCKING BIN WALL SYSTEM. THE SYSTEM IS MANUFACTURED FROM HIGH STRENGTH FACTORY CONTROLLED PRECAST CONCRETE. KAST BLOCKS ARE MANUFACTURED IN STANDARD (COMMERCIAL) 6'-0" WIDE X 2'-0" HIGH X 3'-0" DEEP BLOCKS, OR RESIDENTIAL 2'-0" WIDE X 1'-0" HIGH X 1'-0" DEEP BLOCK. TWO (2) SIZES ALLOWS YOU TO ECONOMICALLY MEET YOUR PARTICULAR PROJECT CONDITIONS. TIE BACK KAST BLOCK (TB) AND TERRACING CAPABILITIES KAST BLOCK (GW) ALLOW KAST BLOCK THE VERSATILITY TO MEET YOUR RETAINING WALL REQUIREMENTS.

HOW DOES IT WORK:

KAST BLOCK IS A SIMPLE, INTERLOCKING, STACKABLE PRECAST BLOCK. UNITS ARE SIMPLY MOVED INTO POSITION WITH SMALL CONSTRUCTION EQUIPMENT. THE SELF ALIGNING INTERLOCKING BLOCK CREATE A MONOLITHIC WALL. STRONG AND DURABLE.

INSTALLATION:

KAST BLOCKS ARE EXCEPTIONALLY EASY TO INSTALL. UNITS ARE LIFTED INTO PLACE AND STACKED AS REQUIRED. SELF ALIGNING.

PREPARATION:

SITE PREPARATION IS MINIMAL. PRECAST OR C.I.P. MUD SLAB ON EXISTING SUBGRADE MATERIAL FOLLOWING MINIMAL GRADE PREPARATION. WALLS GREATER THAN 6'-0" REQUIRE ENGINEER REVIEW.

STABILITY:

THE SHIP-LAP JOINT IN KAST BLOCKS ALLOWS FOR EASY INTERLOCKING OF MANY BLOCKS TO FORM A SINGLE STRONG WALL TO COVER ANY AREA REQUIRED. CONCRETE FILL IS AVAILABLE AND RECOMMENDED FOR MAXIMUM STABILITY.

VERSATILITY:

KAST BLOCK CAN EASILY BE SET TO FIT SMALLER AREAS, IRREGULAR SHAPES, OR INSIDE AND OUTSIDE CORNERS.

ANCHORING:

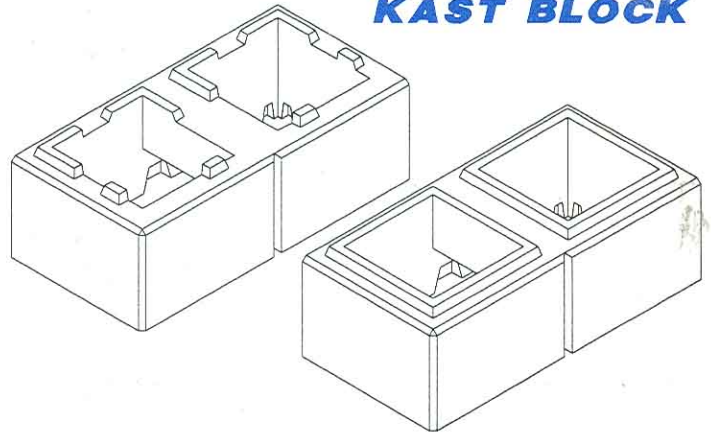
THE INTEGRATED CABLE IN KAST BLOCK (TB), "TIE BACK" IS EASILY ACCESSIBLE FOR USE IN ANCHORING. SOME INSTALLATION MAY REQUIRE THE USE OF A TIE BACK FOR EXTRA STABILITY.

VEGETATION REGROWTH:

DUE TO THE LARGE PERCENTAGE OF OPEN AREA WITHIN THE KAST BLOCK "GREEN WALL" SYSTEM, VEGETATION REGROWTH EASILY OCCURS. FOR BEST RESULTS, SOIL CAN BE BACK FILLED TO JUST BELOW THE TOP OF THE BLOCKS AND PLANTED. THE TERRACING METHOD OF THE KAST BLOCK "GREEN WALL" ALLOWS FOR AN EXTREMELY ASTHETICALLY PLEASING PLANTED RETAINING WALL.

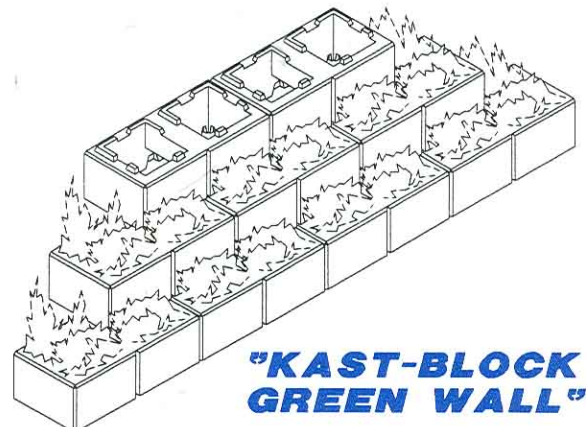
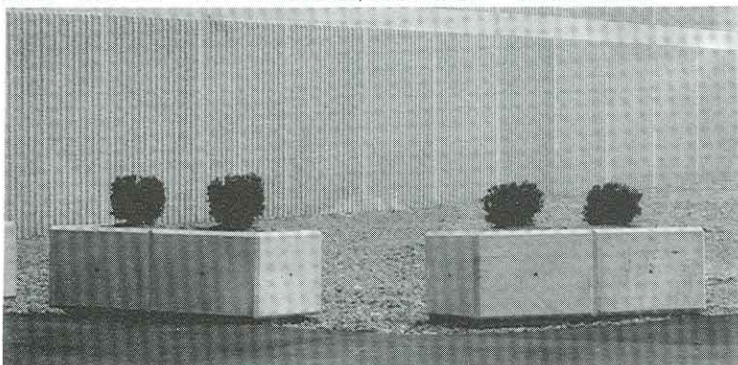


KAST BLOCK



TRADE NAME	TYPE	HEIGHT RANGE
KAST BLOCK	FREE STANDING - GRAVITY	2' - 8'
KAST BLOCK GEO	GEO-GRID TIE BACK (FILL CONDITIONS)	10' - 20'
KAST BLOCK TB	TIE BACK (ROD TENDON)	10' - 20'
KAST BLOCK GREEN	TERRACING (GREEN WALL)	4' - 20'
KAST BLOCK CAP	CAP	N/A
KAST BLOCK FOOTER	FOOTER	≤6'

SPEC: 4000 PSI - NON-REINFORCED/REINFORCED - INTERLOCKING.



"KAST-BLOCK GREEN WALL"