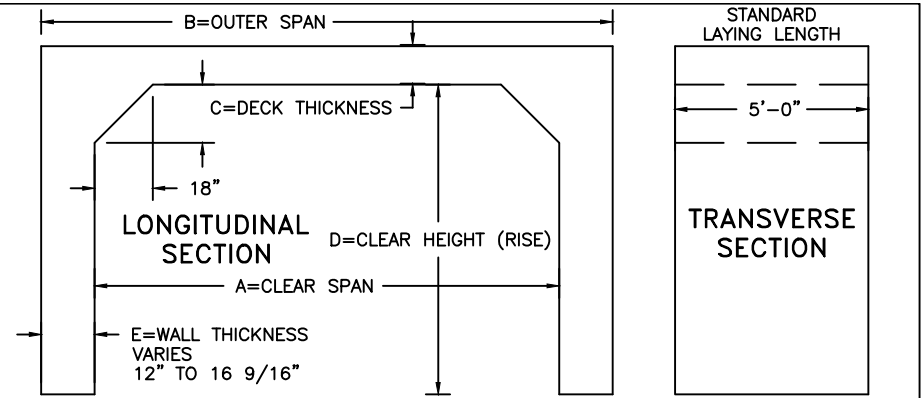




**KISTNER CONCRETE PRODUCTS, INC. ©**  
**SUPERIOR PRECAST PRODUCTS THROUGH ENGINEERING**

MAIN SALES OFFICE: P.O. BOX 250, 8713 READ ROAD, EAST PEMBROKE, NEW YORK 14056  
 716/894-2267 BUFFALO LINE 716/762-8216 EAST PEMBROKE LINE 716/762-8315 FAX

**KAST-SPAN – 3 SIDED RIGID FRAME**  
**ADJUSTABLE SKEW BRIDGE SYSTEM**  
**STANDARD SECTIONS**



A	B	C	D=3 Ft.		D=4 Ft.		D=5 Ft.		D=6 Ft.		D=7 Ft.		D=8 Ft.		D=9 Ft.		D=10 Ft.	
Clear Span Ft.	Outer Span Ft.	Deck Thick. In.	Water Way Sq. Ft.	Weight Tons	Water Way Sq. Ft.	Weight Tons	Water Way Sq. Ft.	Weight Tons	Water Way Sq. Ft.	Weight Tons	Water Way Sq. Ft.	Weight Tons	Water Way Sq. Ft.	Weight Tons	Water Way Sq. Ft.	Weight Tons	Water Way Sq. Ft.	Weight Tons
12	13.67	12.00	34	7.8	46	8.4	58	9.0	70	9.5	83	10.1	95	10.6	107	11.1	119	11.5
13	14.67	12.00	37	8.1	50	8.7	63	9.3	76	9.8	90	10.4	103	10.9	116	11.5	129	12.0
14	15.67	12.00	40	8.5	54	9.1	68	9.7	82	10.3	97	10.8	111	11.3	125	11.9	139	12.4
15	16.67	12.00	43	8.8	58	9.5	73	10.0	88	10.6	104	11.1	119	11.7	134	12.2	149	12.7
16	17.67	12.00	46	9.2	62	9.8	78	10.4	94	11.0	111	11.5	127	12.1	143	12.6	159	13.1
17	18.67	12.00	49	9.7	66	10.2	83	10.8	100	11.4	118	11.9	135	12.5	152	13.0	169	13.5
18	19.67	12.00	52	10.0	70	10.6	88	11.1	106	11.7	125	12.3	143	12.8	161	13.3	179	13.8
19	20.67	12.00	55	10.4	74	11.0	93	11.6	112	12.1	132	12.7	151	13.2	170	13.7	189	14.2
20	21.67	12.00	58	10.8	78	11.4	98	12.0	118	12.5	139	13.1	159	13.6	179	14.1	199	14.6
21	22.67	14.00	61	12.5	82	13.1	103	13.7	124	14.3	146	14.8	167	15.4	188	15.9	209	16.4
22	23.67	14.00	64	13.0	86	13.6	108	14.1	130	14.7	153	15.3	175	15.8	197	16.3	219	16.8
23	24.67	14.00	67	13.4	90	14.0	113	14.6	136	15.2	160	15.7	183	16.2	206	16.8	229	17.3
24	25.67	14.00	70	13.8	94	14.4	118	15.0	142	15.6	167	16.1	191	16.7	215	17.2	239	17.7
25	26.67	14.00	73	14.3	98	14.9	123	15.5	148	16.0	174	16.6	199	17.1	224	17.6	249	18.1
26	27.67	16.00	76	16.4	102	17.0	128	17.6	154	18.2	181	18.7	207	19.3	233	19.8	259	20.3
27	28.67	16.00	79	17.0	106	17.6	133	18.1	160	18.8	188	19.3	215	19.8	242	20.3	269	20.8
28	29.67	16.00	82	17.5	110	18.1	138	18.7	166	19.2	195	19.8	223	20.3	251	20.8	279	21.4
29	30.67	16.00	85	17.9	114	18.5	143	19.1	172	19.7	202	20.2	231	20.8	260	21.3	289	21.8
30	31.67	16.00	88	18.5	118	19.1	148	19.6	178	20.2	209	20.8	239	21.3	269	21.8	299	22.3
31	32.67	18.00	91	20.9	122	21.5	153	22.0	184	22.7	216	23.3	247	23.9	278	24.5	309	25.1
32	33.67	18.00	94	21.5	126	22.1	158	22.6	190	23.3	223	24.0	255	24.6	287	25.1	319	25.7
33	34.67	18.00	97	22.1	130	22.6	163	23.2	196	23.9	230	24.5	263	25.1	296	25.7	329	26.3
34	35.67	18.00	100	22.7	134	23.3	168	23.9	202	24.5	237	25.1	271	25.7	305	26.3	339	26.9
35	36.67	18.00	103	23.2	138	23.8	173	24.4	208	25.0	244	25.7	279	26.3	314	26.9	349	27.4

E= (VARIES FROM 16 9/16" AT 0° SKEW TO 12" AT 45° SKEW)