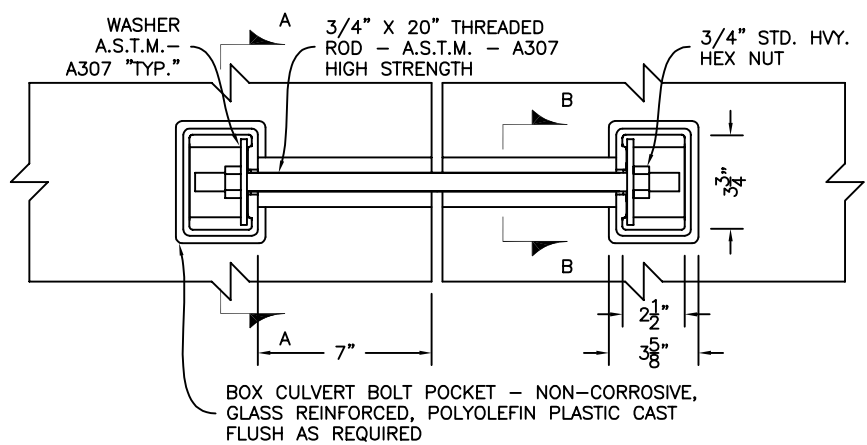
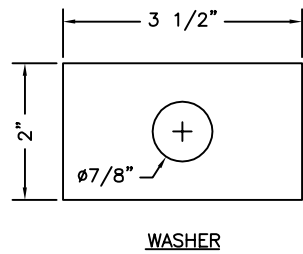




KISTNER CONCRETE PRODUCTS INC.
 8713 READ ROAD
 E. PEMBROKE, N.Y. 14056
 (716) 894-2267

PROJECT:	BOX CULVERT BOLT POCKET DETAIL	LOCATION:	
OWNER:		SCALE:	N/A
ENGINEER:		DRAWN BY:	CAE
CONTRACTOR:		DATE:	10-15-03
MANUFACTURER:	KISTNER CONCRETE PRODUCTS, INC.	DWG. NO.:	BC-IBLTPOK
PRODUCT DESIGNATION:	BOX CULVERT BOLT POCKET HARDWARE		
CHECK 1:	DAR	CHECK 2:	

REVISIONS



QTY - _____

NOTE:

THIS UNIT FOR UPSTREAM (INLET) END SECTION ONLY.
 (STAYS IN PLACE)

INTERNAL BOLT POCKET SYSTEM

