



KISTNER CONCRETE PRODUCTS INC.  
8713 READ ROAD  
E. PEMBROKE, N.Y.  
14056  
(716) 894-2267

PRODUCT DESIGNATION

3700 GALLON "K-SEP" GREASE INTERCEPTOR

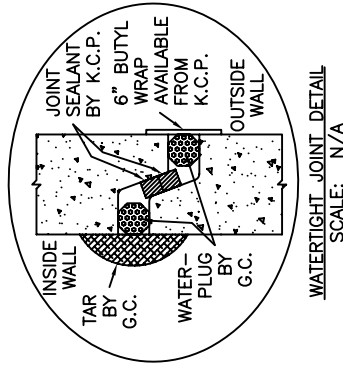
DWG. NO.

GI-KSEP-GI3700©

1-18-07

- SPECIFICATIONS:**  
 CONCRETE: 4,000 P.S.I. @ 28 DAYS.  
 ENTRAINED AIR: 5% - 9%.  
 STEEL: A.S.T.M. A496-A615  
 GRADE 60-60 KSI.  
 DESIGN LOADING: A-0.3/300PSF/WALKWAYS. FLOTATION FORCES NOT ACCOUNTED FOR.  
 PIPING: OUTLET TEES, DROP LEGS & FITTINGS SUPPLIED & INSTALLED BY CONTR.  
 CONTR. TO DRILL MIN. 6"-2" HOLES BELOW TEE FITTING STARTING 6" OFF FLOOR.  
 FRAME & COVER & RISERS: SEE DWG. #ST-NTTKRSR - "NON-TRAFFIC TANK RISERS".  
 COVER OVER TANK: MAX. 3' OF EARTH FILL.

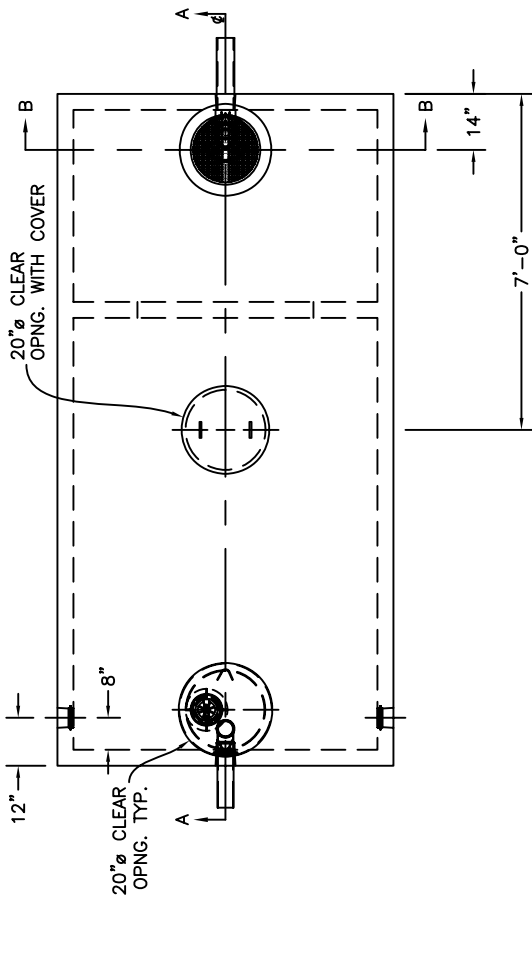
WEIGHT:  
 TOP SECTION: 16,829 LBS.  
 BOTTOM SECTION: 16,708 LBS.  
 TOTAL: 33,537 LBS.



OPTIONAL A300 TERTIARY EFFLUENT POLISHING FILTER WITH EXTENSION (REMOVABLE FOR SERVICING)

OPTIONAL - (REQ'D IF EFFLUENT FILTER IS USED) 18" DIA. CAST IRON FRAME & COVER LOCKING & GASKETED LEGEND - "FATAL TO ENTER"

STANDARD 20" COVER WITH 6" PVC COUPLER CAST IN WITH 6" SEWER VENT COVER ARE INCLUDED IF 18" DIA. FRAME & COVER ARE NOT USED



6" CAST IRON SEWER VENT COVER  
 STANDARD 6" S & D PIPE AVAILABLE IN 10' LENGTHS ONLY  
 STANDARD 20" COVER WITH CAST-IN 6" S & D COUPLER

