

SP-7A
SPECIFICATIONS:
CONCRETE: 5,000 P.S.I. @ 28 DAYS.
ENTRAINED AIR: 5% - 8%.
STEEL: A.S.T.M. A496-A615
 GRADE 60-80 KSI.
DESIGN LOADING: ACI 318-99 TRAFFIC. USE ACI LOAD FACTORS.
 A.A.S.H.T.O. METHOD OF DESIGN. EQUIVALENT SOIL PRESSURE OF 40 (PCF).
LIVE LOAD: H20.
EARTH FILL: 0 TO 6'.
WATER TABLE: 3' BELOW GRADE.

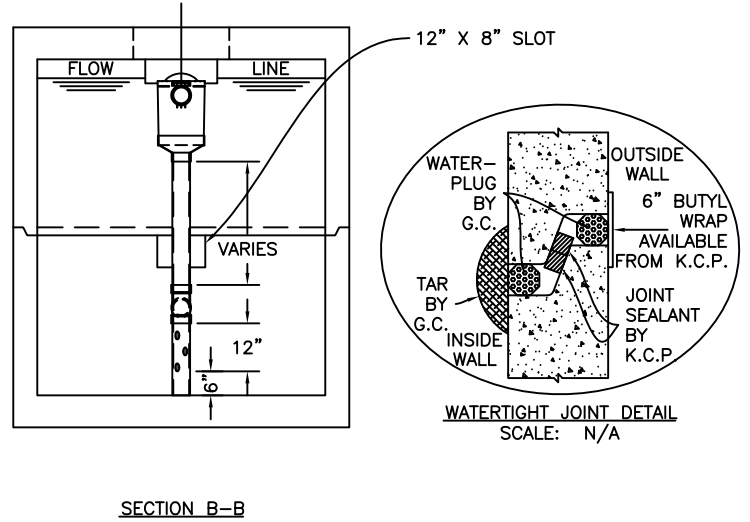
PIPING: TEES, DROP LEGS & FITTINGS SUPPLIED & INSTALLED BY CONTR. CONTR. TO DRILL MIN. 6-2" HOLES BELOW TEE FITTING STARTING 6" OFF FLOOR.

FRAME & COVER & RISERS: SEE DWG. #ST-HDTRSRS - "TRAFFIC TANK RISERS".

WEIGHT:
TOP SECTION: 20,704 LBS.
BOTTOM SECTION: 22,000 LBS.
TOTAL: 42,704 LBS.

WATERTIGHT ASSEMBLY IS THE RESPONSIBILITY OF THE INSTALLING CONTRACTOR. ASK FOR KISTNER "WATERTIGHT JOINT INSTALLATION" DETAIL.

- PIPE OPENINGS STOCK:**
- PIPE SEALS REQUIRED
 - 4" PVC - OPENING WITH SEAL - STOCK
 - 6" PVC - OPENING STOCK - SEAL TO BE INSTALLED
 - 8" PVC - OPENING STOCK - SEAL TO BE INSTALLED
 - GROUTED OPENINGS ONLY - REQUIRED
 - 4" PVC - OPENING WITH SEAL - STOCK
 - 6" PVC - STOCK KNOCKOUT TO BE BROKEN OUT BY CONTRACTOR
 - 8" PVC - STOCK KNOCKOUT TO BE BROKEN OUT BY CONTRACTOR



PRECAST

KISTNER CONCRETE PRODUCTS, INC.
 8713 READ ROAD
 E. PEMBROKE, N.Y.
 14056
 (716) 894-2267

PRODUCT DESIGNATION
 3100 GALLON "K-SEP"
 GREASE INTERCEPTOR - TRAFFIC

DWG. NO.
 G1KSEP-G13100T ©
 10/17/12