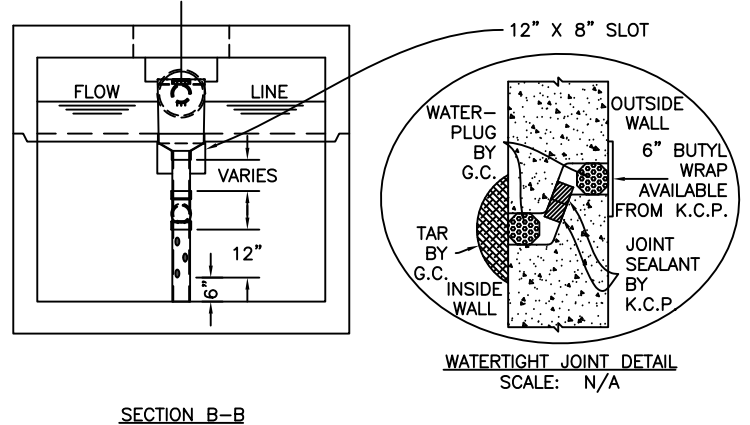


SP-7A
SPECIFICATIONS:
 CONCRETE: 5,000 P.S.I. @ 28 DAYS.
 ENTRAINED AIR: 5% - 8%.
 STEEL: A.S.T.M. A496-A615 GRADE 60-80 KSI.
DESIGN LOADING: ACI 318-99 TRAFFIC. USE ACI LOAD FACTORS. A.A.S.H.T.O. METHOD OF DESIGN. EQUIVALENT SOIL PRESSURE OF 40 (PCF).
LIVE LOAD: H20.
EARTH FILL: 0 TO 6'.
WATER TABLE: 3' BELOW GRADE.
PIPING: TEES, DROP LEGS & FITTINGS SUPPLIED & INSTALLED BY CONTR. CONTR. TO DRILL MIN. 6-2" HOLES BELOW TEE FITTING STARTING 6" OFF FLOOR.
FRAME & COVER & RISERS: SEE DWG. #ST-HDTRSRS - "TRAFFIC TANK RISERS".
WEIGHT:
 TOP SECTION: 14,145 LBS.
 BOTTOM SECTION: 22,000 LBS.
 TOTAL: 36,145 LBS.

WATERTIGHT ASSEMBLY IS THE RESPONSIBILITY OF THE INSTALLING CONTRACTOR. ASK FOR KISTNER "WATERTIGHT JOINT INSTALLATION" DETAIL.

- PIPE OPENINGS STOCK:**
- PIPE SEALS REQUIRED
 - 4" PVC - OPENING WITH SEAL - STOCK
 - 6" PVC - OPENING STOCK - SEAL TO BE INSTALLED
 - 8" PVC - OPENING STOCK - SEAL TO BE INSTALLED
 - GROUTED OPENINGS ONLY - REQUIRED
 - 4" PVC - OPENING WITH SEAL - STOCK
 - 6" PVC - STOCK KNOCKOUT TO BE BROKEN OUT BY CONTRACTOR
 - 8" PVC - STOCK KNOCKOUT TO BE BROKEN OUT BY CONTRACTOR



PRECAST

KISTNER CONCRETE PRODUCTS, INC.
 8713 READ ROAD
 E. PEMBROKE, N.Y.
 14056
 (716) 884-2267

PRODUCT DESIGNATION
 2000 GALLON "K-SEP"
 GREASE INTERCEPTOR - TRAFFIC

DWG. NO.
 GI-KSEP-GI2000T ©
 10/17/12