



KISTNER CONCRETE PRODUCTS INC.
8713 READ ROAD
E. PEMBROKE, N.Y.
14056
(716) 894-2267

PRODUCT DESIGNATION

DWG. NO.

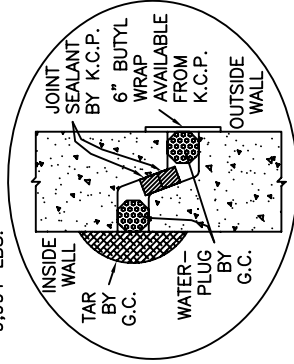
1500 GALLON "K-SEP" GREASE INTERCEPTOR

GI-KSEP-GI1500-1P

1-16-07

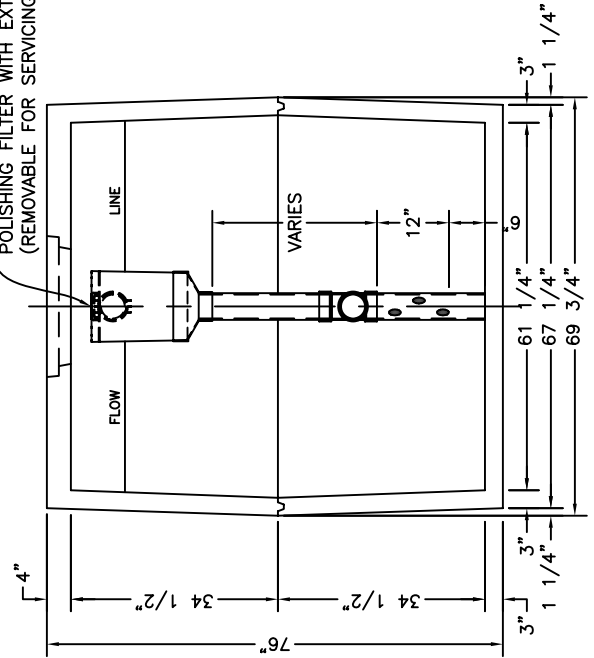
- SPECIFICATIONS:**
- CONCRETE: 4,000 P.S.I. @ 28 DAYS.
 - ENRAINED AIR: 5% - 9%.
 - STEEL: A.S.T.M. A496-A615 GRADE 60-60 KSI.
 - DESIGN LOADING: A-0.3/300PSF/WALKWAYS. FLOTATION FORCES NOT ACCOUNTED FOR.
 - PIPING: OUTLET TEES, DROP LEGS & FITTINGS SUPPLIED & INSTALLED BY CONTR. CONTR. TO DRILL MIN. 6-2" HOLES BELOW TEE FITTING STARTING 6" OFF FLOOR.
 - FRAME & COVER & RISERS: SEE DWG. #ST-NTTKRSR - "NON-TRAFFIC TANK RISERS".
 - COVER OVER TANK: MAX. 3' OF EARTH FILL.

WEIGHT:
TOP SECTION: 5,213 LBS.
BOTTOM SECTION: 4,778 LBS.
TOTAL: 9,991 LBS.

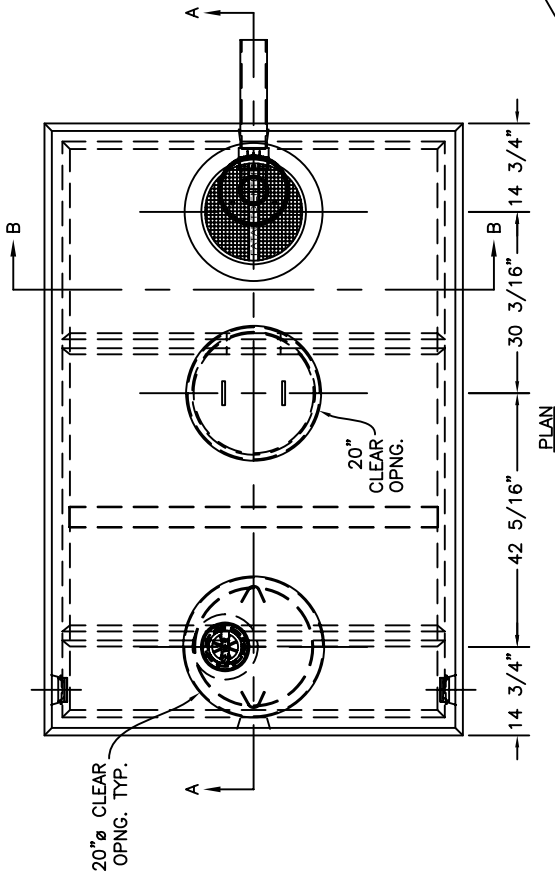


WATERTIGHT JOINT DETAIL
SCALE: N/A

OPTIONAL
A300 TERTIARY EFFLUENT
POLISHING FILTER WITH EXTENSION
(REMOVABLE FOR SERVICING)



SECTION B-B



PLAN

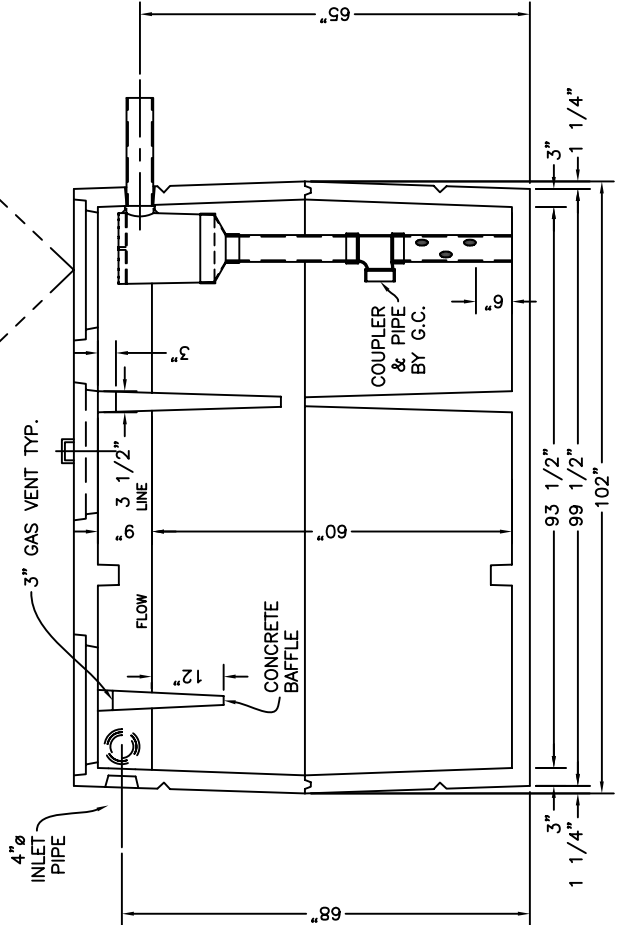
STANDARD 20" COVER WITH
6" PVC COUPLER CAST IN
WITH 6" SEWER VENT COVER
ARE INCLUDED IF 18" DIA.
FRAME & COVER ARE NOT USED

OPTIONAL - (REQ'D IF EFFLUENT
FILTER IS USED)
18" DIA. CAST IRON FRAME
& COVER & GASKETED
LOCKING - "FATAL TO ENTER"

6" CAST
IRON SEWER
VENT COVER
STANDARD 6" S & D
PIPE AVAILABLE IN
10' LENGTHS ONLY

STANDARD
20" COVER
WITH CAST-IN
6" S & D
COUPLER

4"Ø
INLET
PIPE



SECTION A-A