



KISTNER CONCRETE PRODUCTS INC.
8713 READ ROAD
E. PEMBROKE, N.Y.
14056
(716) 894-2267

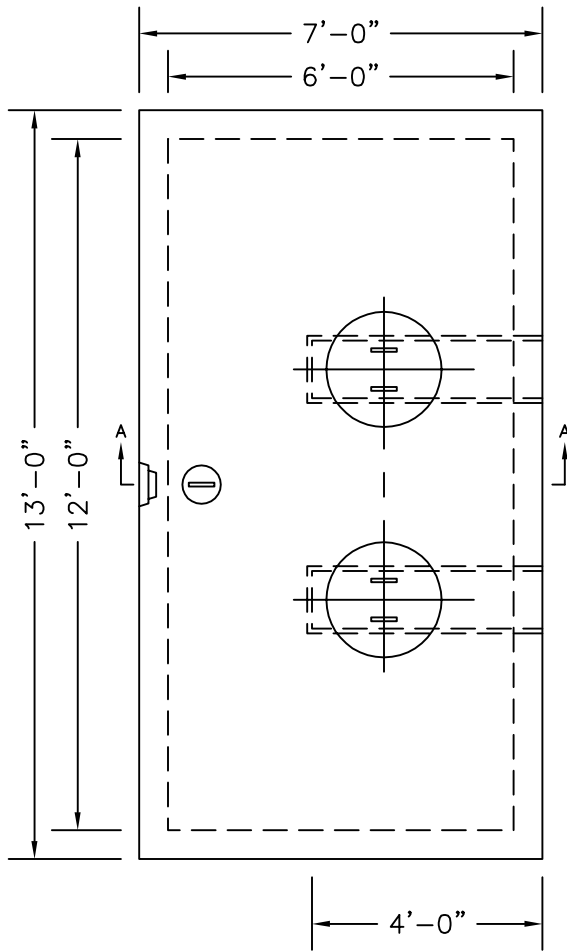
PRODUCT DESIGNATION

"G" TYPE DOSING CHAMBER

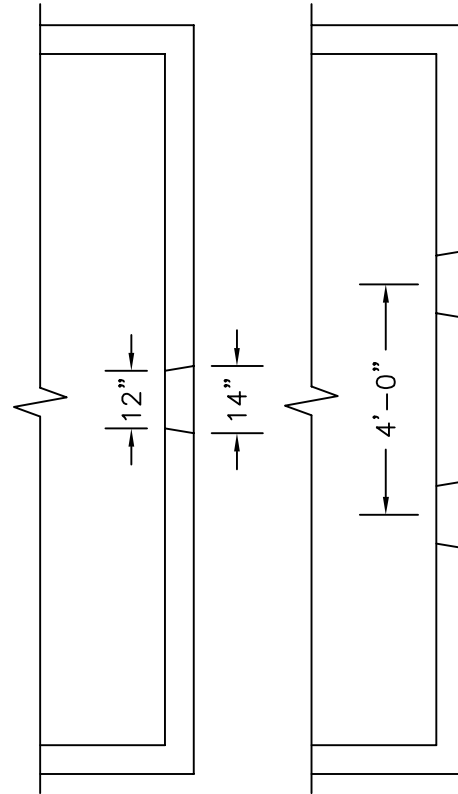
DWG. NO.

DC-G-TYPE ©

11-8-05

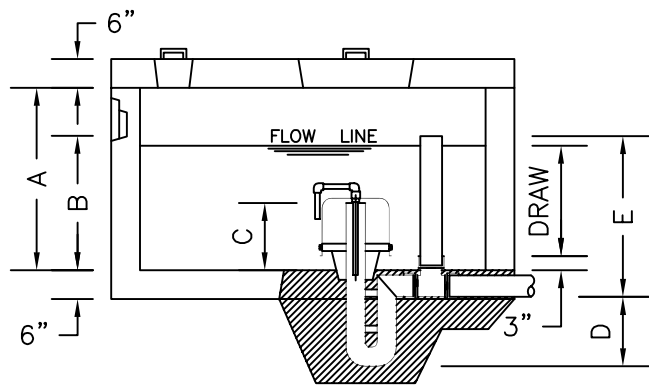


PLAN



PARTIAL SIDE VIEW OF SINGLE SIPHON.

PARTIAL SIDE VIEW OF DOUBLE ALTERNATING SIPHONS.



SECTION A-A

SPECIFICATIONS:
CONCRETE: 4000 P.S.I. ● 28 DAYS.
ENTRAINED AIR: 5% - 9%.
STEEL: A.S.T.M. A496-A615 GRADE 60-60 KSI.
DESIGN LOADING: A-0.3/300PSF/WALKWAYS.

SPECIFICATIONS:
CONCRETE: 4000 P.S.I. ● 28 DAYS.
ENTRAINED AIR: 5% - 9%.
STEEL: A.S.T.M. A496-A615 GRADE 60-60 KSI.
DESIGN LOADING: A.A.S.H.T.O. HS-20-44 WITH 30% IMPACT AND EQUIVALENT SOIL PRESSURE OF 130 (PSI).

SIPHON	GAL	DRAW	A	B	C	D	E
417	760	17"	32"	22"	11"	15"	27.5"
423	1030	23"	38"	28"	11"	15"	33.5"
630	1346	30"	45"	35"	16"	30"	45"

WEIGHT: 417: TOP: 6,741 LBS.
BOTTOM: 14,086 LBS.
TOTAL: 20,827 LBS.

423: TOP: 6,741 LBS.
BOTTOM: 15,493 LBS.
TOTAL: 22,234 LBS.

630: TOP: 6,741 LBS.
BOTTOM: 17,135 LBS.
TOTAL: 23,876 LBS.