



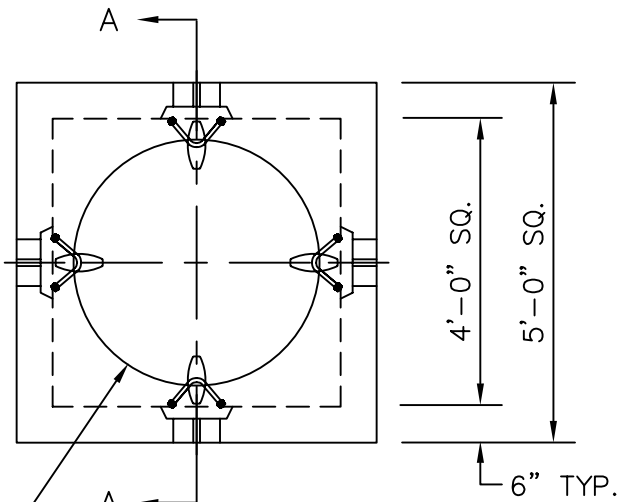
KISTNER CONCRETE PRODUCTS INC.  
8713 READ ROAD  
E. PEMBROKE, N.Y.  
14056  
(716) 894-2267

PRODUCT DESIGNATION

COMMUNICATION/POWER MANHOLE

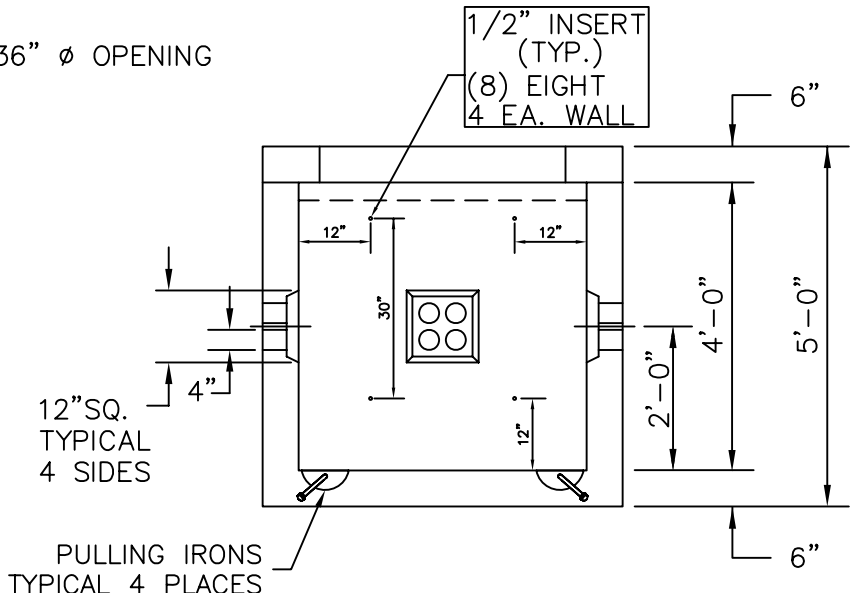
DWG. NO.

CMH-CM44SL ©  
9/25/06



- 30" Ø OPENING
- 36" Ø OPENING

PLAN VIEW



SECTION A-A

SPECIFICATIONS:

CONCRETE: 4000 P.S.I. @ 28 DAYS.  
ENTRAINED AIR: 5% - 9%.  
STEEL: A.S.T.M. A496-A615  
GRADE 60-60 KSI.  
DESIGN LOADING: A.A.S.H.T.O. HS-20-44  
WITH 30% IMPACT AND  
EQUIVALENT SOIL PRESSURE  
OF 130 (PSF). FLOATATION  
FORCES NOT ACCOUNTED FOR.

WEIGHT:

TOP SECTION: 1,076 LBS.  
BOTTOM SECTION: 7,185 LBS.  
TOTAL: 8,261 LBS.