

SPECIFICATIONS:

CONCRETE: 4,000 P.S.I. @ 28 DAYS.
 ENTRAINED AIR: 5% - 9%
 STEEL: A.S.T.M. A496-A615
 GRADE 60-60 KSI.
 DESIGN LOADING: A-0.3/300PSF /WALKWAYS.
 FLOTATION FORCES NOT ACCOUNTED FOR.

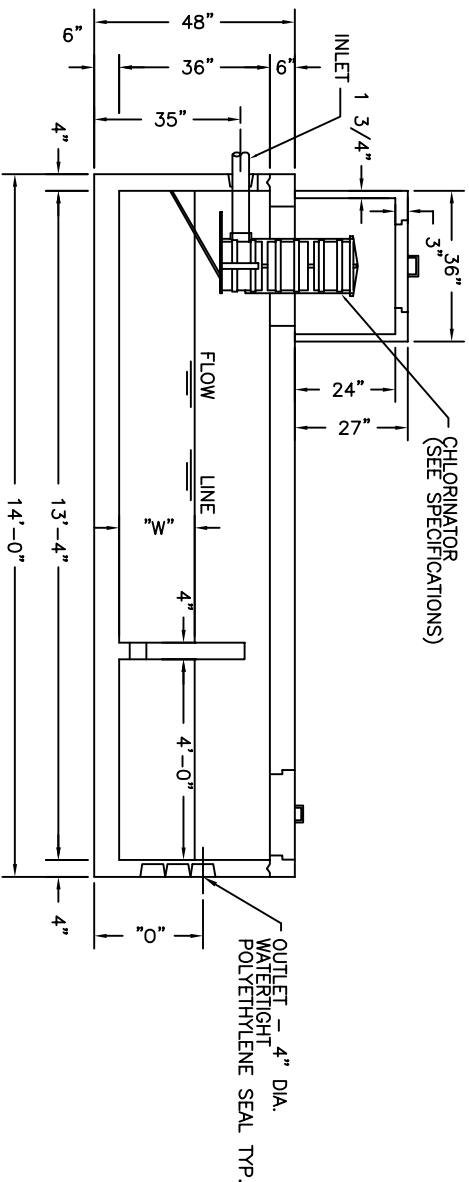
WEIGHT:

TOP: 7259 LBS.
 BOTTOM: 14,241 LBS.
 TOTAL: 21,501 LBS.

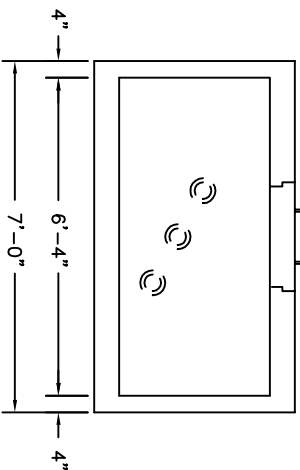
PRODUCT CODE	"O"	"W"	CAPACITY
CCT600	20"	12"	600 GAL.
CCT900	26"	18"	900 GAL.
CCT1200	32"	24"	1200 GAL.

CHLORINATOR MODELS AVAILABLE:

JET NUMBER 110
 JET NUMBER 120
 JET NUMBER 108
 JET NUMBER 100



SECTION A-A



SECTION B-B



KISTNER CONCRETE PRODUCTS INC.
 8713 READ ROAD
 E. PEMBROKE, N.Y.
 14056
 (716) 894-2267

PRODUCT DESIGNATION
 600, 900, 1200 GALLON CHLORINE CONTACT TANK

DWG. NO. CC-CCT-4

2-7-92