



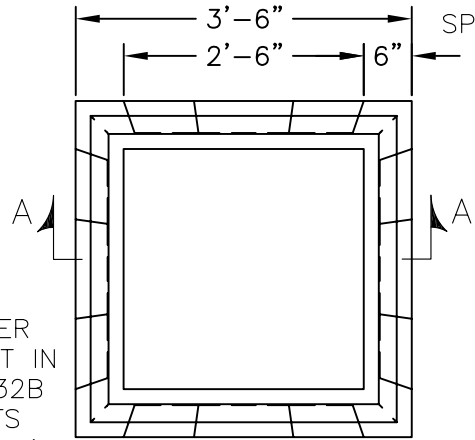
KISTNER CONCRETE PRODUCTS INC.
8713 READ ROAD
E. PEMBROKE, N.Y.
14056
(716) 894-2267

PRODUCT DESIGNATION

**30" SQ. CATCH BASIN
SPECIAL MANUFACTURE**

DWG. NO.

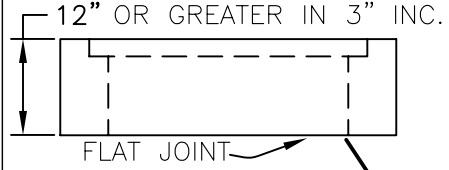
CB-CB3054S ©
4/5/07



PLAN

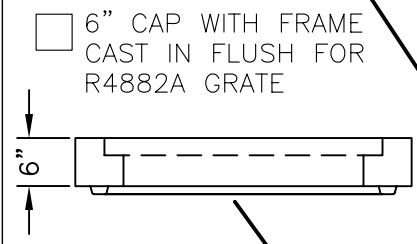
SPECIFICATIONS:
CONCRETE: 4,000 PSI @ 28 DAYS
ENTRAINED AIR: 5%-9%
STEEL: ASTM A496-A615 GRADE 60-60 KSI
DESIGN LOADING: AASHTO HS-20-44 WITH 30% IMPACT AND EQUIVALENT SOIL PRESSURE OF 30 PCF. FLOATATION FORCES NOT ACCOUNTED FOR.
WEIGHT: 4,667 LBS. WITHOUT KNOCKOUTS.
KNOCKOUT: ALL KNOCKOUTS HAVE 2" - 2 1/2" CONCRETE THICKNESS.
DRAIN HOLE: ALL UNITS HAVE 1" DRAIN HOLES IN EACH KNOCKOUT. CONTRACTOR TO GROUT IF NOT REQUIRED.

6" CAP OR TALLER WITH FRAME CAST IN FLUSH FOR R4832B GRATE, FOR UNITS GREATER THEN 6.5' DEEP.



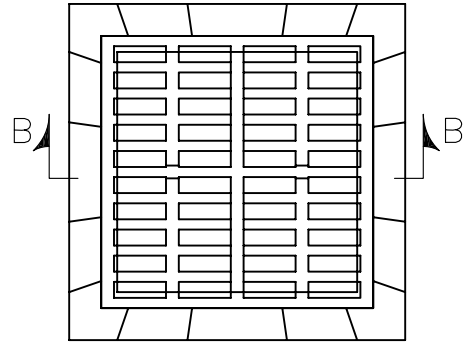
RAISED FRAME & GRATE

- CONTRACTOR TO SUPPLY
- 4" HIGH CAST FRAME & GRATE 2816B (SETS ONLY)



BITUMASTIC COATING (IF REQUIRED)

- INTERIOR
- EXTERIOR
- NONE REQ'D

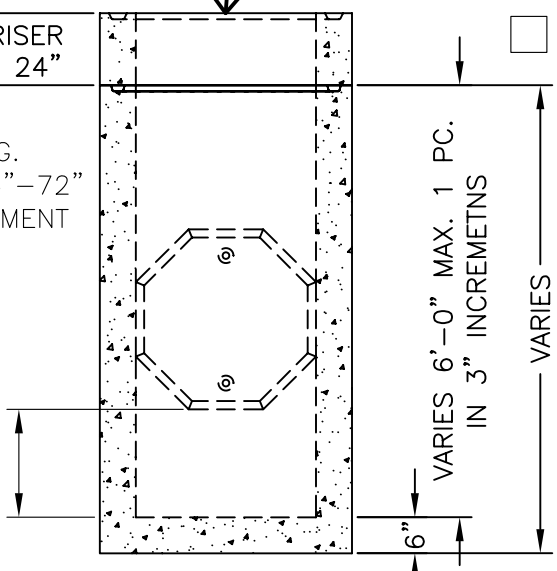


PLAN

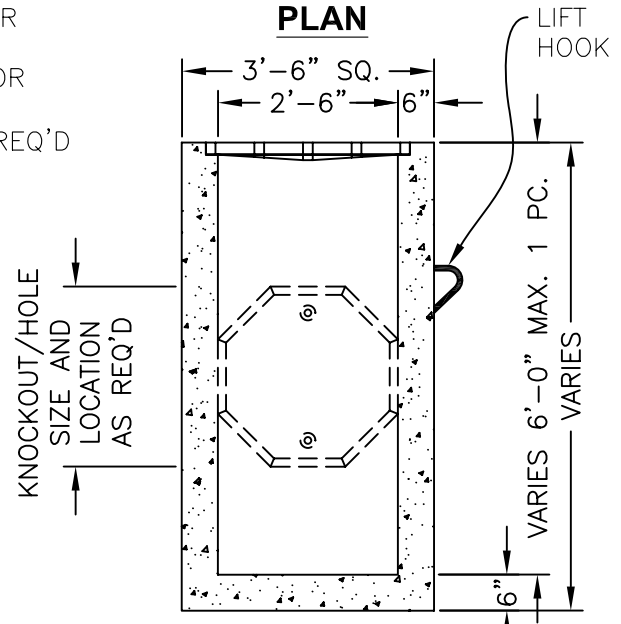
STOCK RISER 6", 12", 24"
 SPECIAL MFG. AVAILABLE 6"-72" @ 3" INCREMENT

SUMP REQ'D

- 0"
- 6"
- 12"
- 18"
- 24"
- ___"



SECTION A-A



SECTION B-B

CODE: 320B-SP FRAME AND GRATE IN CAP OR RAISED STYLE TO BE USED.

CODE: 321B-SP WITH NEENAH R4882A GRATE OR EQUAL - HS-20-44 LOADING BICYCLE PROOF CAST IN FLUSH