



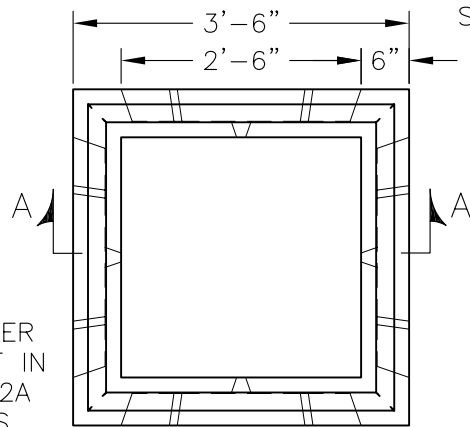
KISTNER CONCRETE PRODUCTS INC.  
8713 READ ROAD  
E. PEMBROKE, N.Y.  
14056  
(716) 894-2267

**PRODUCT DESIGNATION**

**30" SQ. X 72" CATCH BASIN**

**DWG. NO.**

CB-CB3072 ©  
4/5/07

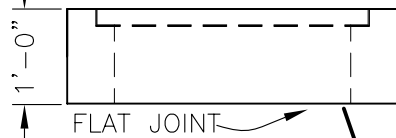


**PLAN**

**SPECIFICATIONS:**

CONCRETE: 4,000 PSI @ 28 DAYS  
 ENTRAINED AIR: 5%-9%  
 STEEL: ASTM A496-A615  
 GRADE 60-60 KSI  
 DESIGN LOADING: AASHTO HS-20-44  
 WITH 30% IMPACT AND  
 EQUIVALENT SOIL PRESSURE  
 OF 30 PCF. FLOATATION  
 FORCES NOT ACCOUNTED  
 FOR.  
 WEIGHT: 4172 LBS.  
 KNOCKOUT: 28"W x 54"H  
 ALL KNOCKOUTS HAVE  
 2"-2 1/2" CONCRETE  
 THICKNESS.  
 DRAIN HOLE: ALL UNITS HAVE 1" DRAIN  
 HOLES IN EACH KNOCKOUT.  
 CONTRACTOR TO GROUT IF  
 NOT REQUIRED.

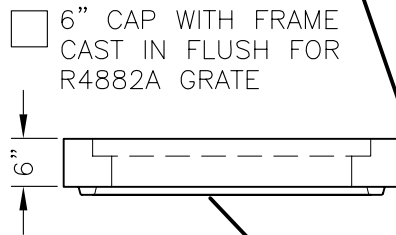
12" CAP OR TALLER  
 WITH FRAME CAST IN  
 FLUSH FOR R4882A  
 GRATE, FOR UNITS  
 GREATER THAN 6.5'  
 DEEP.



FLAT JOINT

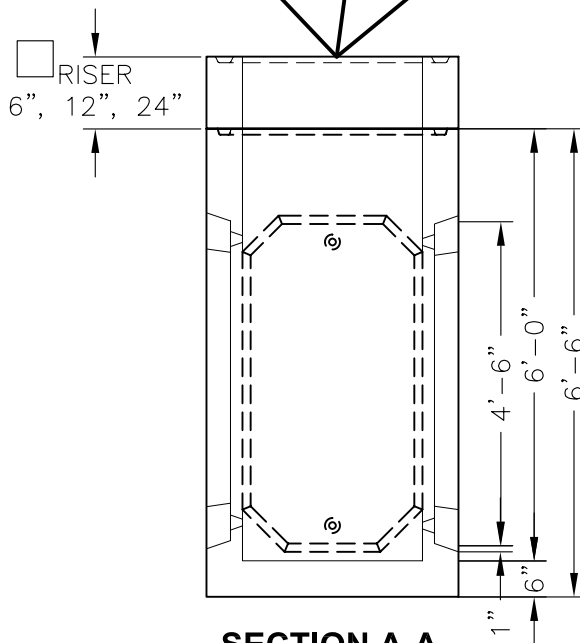
**RAISED FRAME & GRATE**

- CONTRACTOR TO SUPPLY
- 4" HIGH CAST FRAME & GRATE 2816B (SETS ONLY)

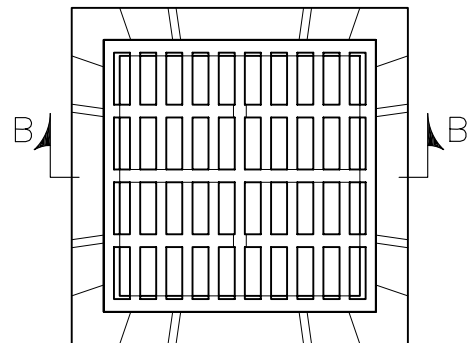


**BITUMASTIC COATING  
(IF REQUIRED)**

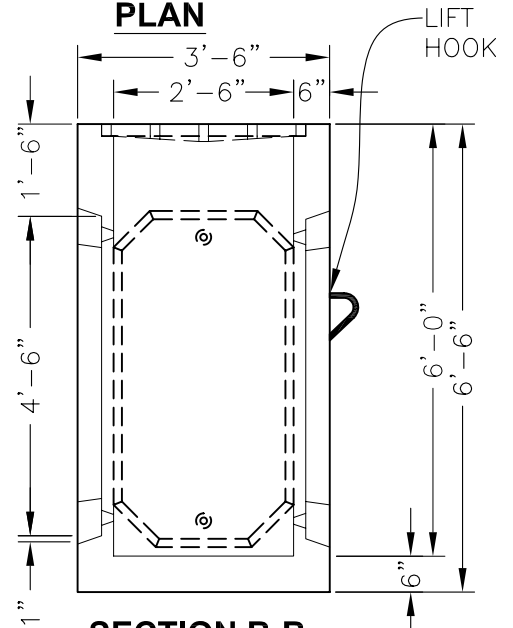
- INTERIOR
- EXTERIOR
- NONE REQ'D



**SECTION A-A**



**PLAN**



**SECTION B-B**

**CODE: 320BTT** FRAME AND GRATE IN  
 CAP OR RAISED STYLE TO BE USED.

**CODE: 321BTT** WITH NEENAH R4882A  
 GRATE OR EQUAL - HS-20-44  
 LOADING BICYCLE PROOF CAST IN  
 FLUSH