



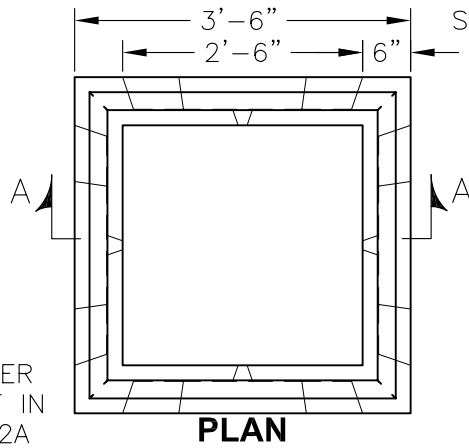
KISTNER CONCRETE PRODUCTS INC.
8713 READ ROAD
E. PEMBROKE, N.Y.
14056
(716) 894-2267

PRODUCT DESIGNATION

30" SQ. X 66" CATCH BASIN

DWG. NO.

CB-CB3066 ©
4/5/07

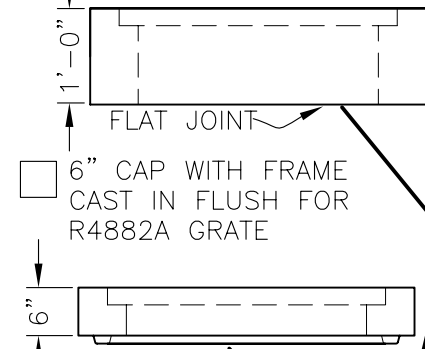


SPECIFICATIONS:

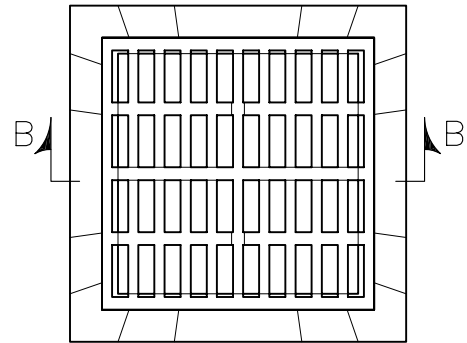
CONCRETE: 4,000 PSI @ 28 DAYS
 ENTRAINED AIR: 5%-9%
 STEEL: ASTM A496-A615
 GRADE 60-60 KSI
 DESIGN LOADING: AASHTO HS-20-44
 WITH 30% IMPACT AND
 EQUIVALENT SOIL PRESSURE
 OF 30 PCF. FLOATATION
 FORCES NOT ACCOUNTED
 FOR.
 WEIGHT: 3727 LBS.
 KNOCKOUT: 28"W x 54"H
 ALL KNOCKOUTS HAVE
 2"-2 1/2" CONCRETE
 THICKNESS.
 DRAIN HOLE: ALL UNITS HAVE 1" DRAIN
 HOLES IN EACH KNOCKOUT.
 CONTRACTOR TO GROUT IF
 NOT REQUIRED.

12" CAP OR TALLER
 WITH FRAME CAST IN
 FLUSH FOR R4882A
 GRATE FOR UNITS
 GREATER THAN 6.5'
 DEEP.

RAISED FRAME & GRATE

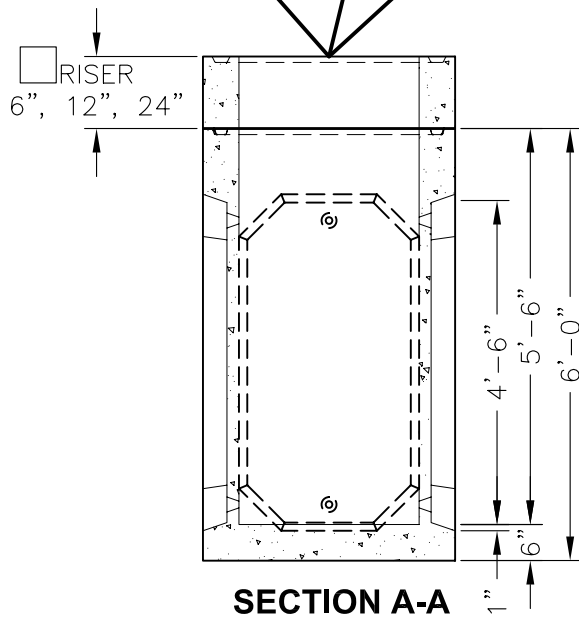


- CONTRACTOR TO SUPPLY
- 4" HIGH CAST FRAME &
GRATE 2816B (SETS ONLY)

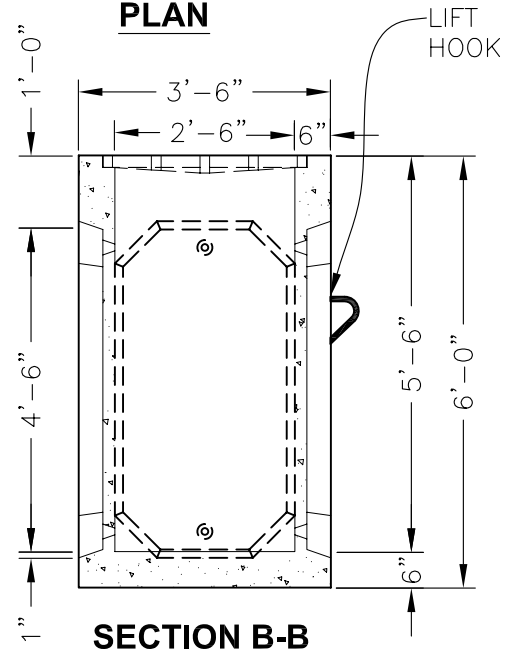


**BITUMASTIC COATING
(IF REQUIRED)**

- INTERIOR
- EXTERIOR
- NONE REQ'D



SECTION A-A



SECTION B-B

CODE: 320BT FRAME AND GRATE IN
 CAP OR RAISED STYLE TO BE USED.

CODE: 321BT WITH NEENAH R4882A
 GRATE OR EQUAL - HS-20-44
 LOADING BICYCLE PROOF CAST IN
 FLUSH