



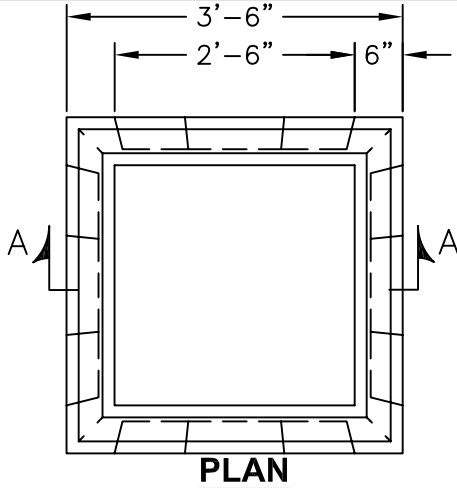
KISTNER CONCRETE PRODUCTS INC.  
8713 READ ROAD  
E. PEMBROKE, N.Y.  
14056  
(716) 894-2267

**PRODUCT DESIGNATION**

**30" SQ. X 36" CATCH BASIN**

**DWG. NO.**

CB-CB3036 ©  
3/5/07



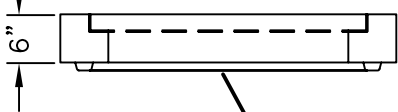
**SPECIFICATIONS:**

CONCRETE: 4,000 PSI @ 28 DAYS  
 ENTRAINED AIR: 5%-9%  
 STEEL: ASTM A496-A615  
 GRADE 60-60 KSI  
 DESIGN LOADING: AASHTO HS-20-44  
 WITH 30% IMPACT AND  
 EQUIVALENT SOIL PRESSURE  
 OF 30 PCF. FLOATATION  
 FORCES NOT ACCOUNTED  
 FOR.  
 WEIGHT: 2,732 LBS.  
 KNOCKOUT: 28"W x 28"H  
 ALL KNOCKOUTS HAVE  
 2"-2 1/2" CONCRETE  
 THICKNESS.  
 DRAIN HOLE: ALL UNITS HAVE 1" DRAIN  
 HOLES IN EACH KNOCKOUT.  
 CONTRACTOR TO GROUT IF  
 NOT REQUIRED.

**RAISED FRAME & GRATE**

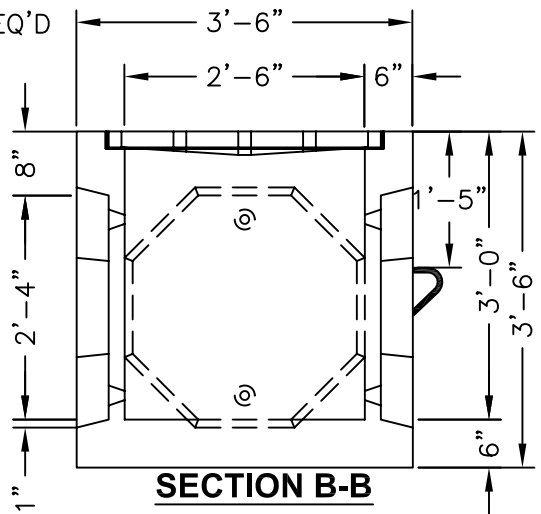
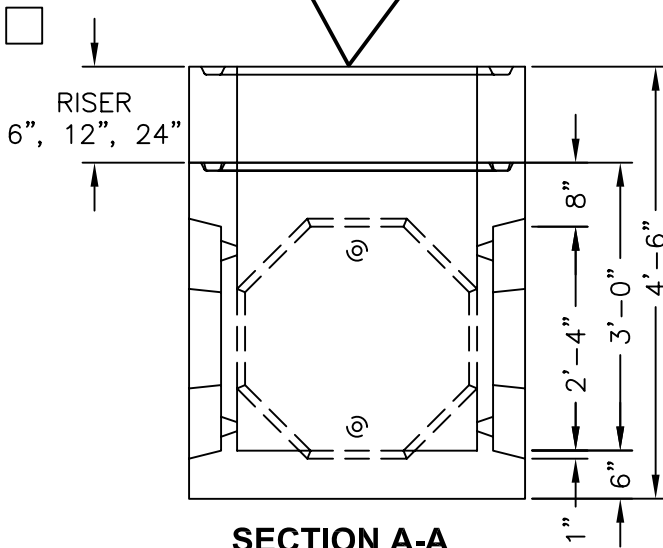
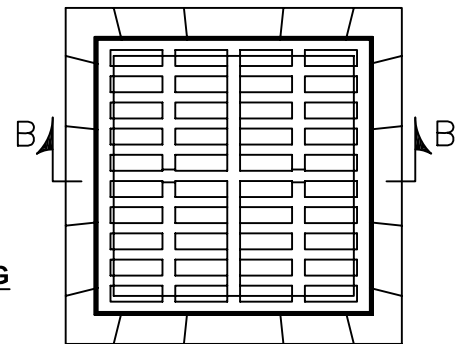
- CONTRACTOR TO SUPPLY
- 6" CAP WITH FRAME  
CAST IN FLUSH FOR  
R4882A GRATE
- 4" HIGH CAST FRAME &  
GRATE 2816B (SETS ONLY)

6" CAP WITH FRAME  
CAST IN FLUSH FOR  
R4882A GRATE



**BITUMASTIC COATING  
(IF REQUIRED)**

- INTERIOR
- EXTERIOR
- NONE REQ'D



**CODE: 320BS** FRAME AND GRATE IN  
CAP OR RAISED STYLE TO BE USED.

**CODE: 321BS** WITH NEENAH R4882A  
GRATE OR EQUAL - HS-20-44  
LOADING BICYCLE PROOF CAST IN  
FLUSH