



KISTNER CONCRETE PRODUCTS INC.  
8713 READ ROAD  
E. PEMBROKE, N.Y.  
14056  
(716) 894-2267

**PRODUCT DESIGNATION**

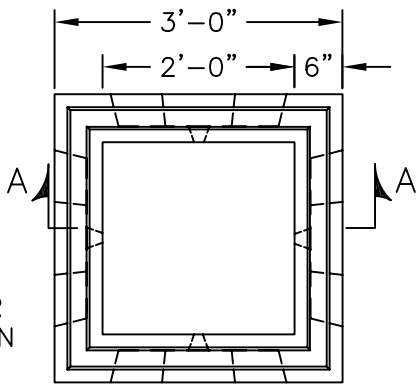
**24" SQ. X 72" CATCH BASIN**

**DWG. NO.**

CB-CB2472 ©  
4/6/07

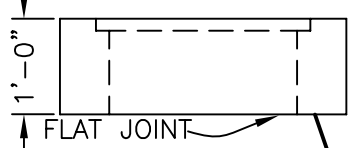
**SPECIFICATIONS:**

CONCRETE: 4,000 PSI @ 28 DAYS  
 ENTRAINED AIR: 5%-9%  
 STEEL: ASTM A496-A615  
 GRADE 60-60 KSI  
 DESIGN LOADING: AASHTO HS-20-44  
 WITH 30% IMPACT AND  
 EQUIVALENT SOIL PRESSURE  
 OF 30 PCF. FLOATATION  
 FORCES NOT ACCOUNTED  
 FOR.  
 WEIGHT: 3633 LBS.  
 KNOCKOUT: 20"W x 54"H  
 ALL KNOCKOUTS HAVE  
 2"-2 1/2" CONCRETE  
 THICKNESS.  
 DRAIN HOLE: ALL UNITS HAVE 1" DRAIN  
 HOLES IN EACH KNOCKOUT.  
 CONTRACTOR TO GROUT IF  
 NOT REQUIRED.



**PLAN**

12" CAP OR TALLER  
 WITH FRAME CAST IN  
 FLUSH FOR R4832B  
 GRATE, FOR UNITS  
 GREATER THAN 6.5'  
 DEEP.

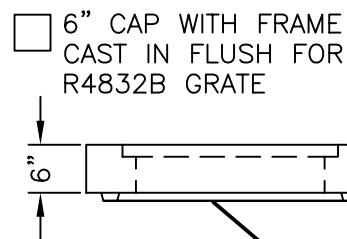


**RAISED FRAME & GRATE**

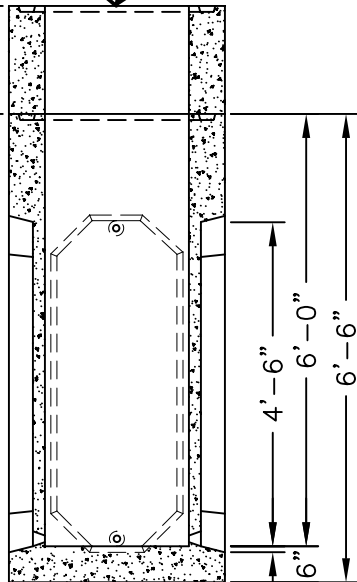
- CONTRACTOR TO SUPPLY
- 2" HIGH STEEL FRAME FOR R4832B GRATE
- 4" HIGH CAST IRON FRAME FOR R4832B GRATE

**BITUMASTIC COATING (IF REQUIRED)**

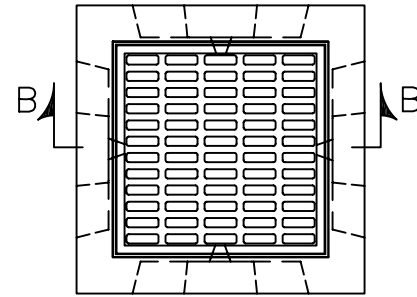
- INTERIOR
- EXTERIOR
- NONE REQ'D



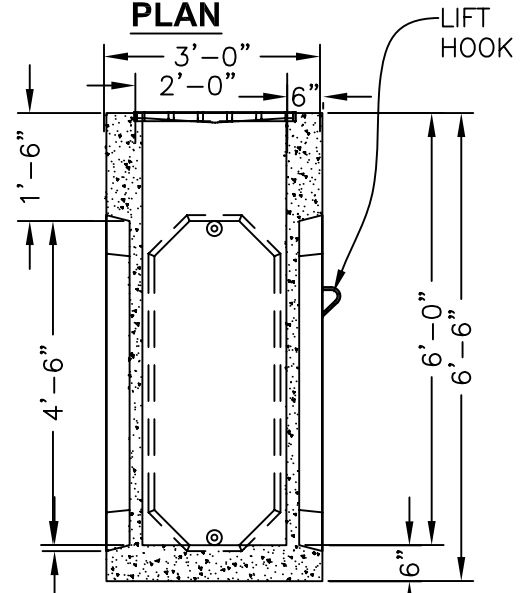
STOCK RISERS  
 6", 12", 18",  
 24", 36", 48"



**SECTION A-A**



**PLAN**



**SECTION B-B**

**CODE: 315BTT** FRAME AND GRATE IN  
 CAP OR RAISED STYLE TO BE USED.

**CODE: 316BTT** WITH NEENAH R4832B  
 GRATE OR EQUAL - HS-20-44  
 LOADING BICYCLE PROOF CAST IN  
 FLUSH