



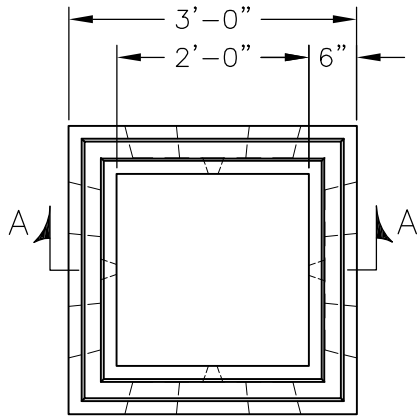
KISTNER CONCRETE PRODUCTS INC.  
8713 READ ROAD  
E. PEMBROKE, N.Y.  
14056  
(716) 894-2267

**PRODUCT DESIGNATION**

**24" SQ. CATCH BASIN  
SPECIAL MANUFACTURE**

**DWG. NO.**

CB-CB2454S ©  
8/22/06



**PLAN**

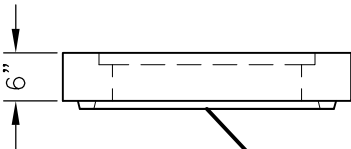
**SPECIFICATIONS:**

CONCRETE: 4,000 PSI @ 28 DAYS  
 ENTRAINED AIR: 5%-9%  
 STEEL: ASTM A496-A615  
 GRADE 60-60 KSI  
 DESIGN LOADING: AASHTO HS-20-44  
 WITH 30% IMPACT AND EQUIVALENT SOIL PRESSURE OF 30 PCF. FLOATION FORCES NOT ACCOUNTED FOR.  
 WEIGHT: 2,901 LBS.  
 KNOCKOUT: ALL KNOCKOUTS HAVE 2" - 2 1/2" CONCRETE THICKNESS.  
 DRAIN HOLE: ALL UNITS HAVE 1" DRAIN HOLES IN EACH KNOCKOUT. CONTRACTOR TO GROUT IF NOT REQUIRED.

**RAISED FRAME & GRATE**

- CONTRACTOR TO SUPPLY
- 2" HIGH STEEL FRAME FOR R4832B GRATE
- 4" HIGH STEEL FRAME FOR R4832B GRATE

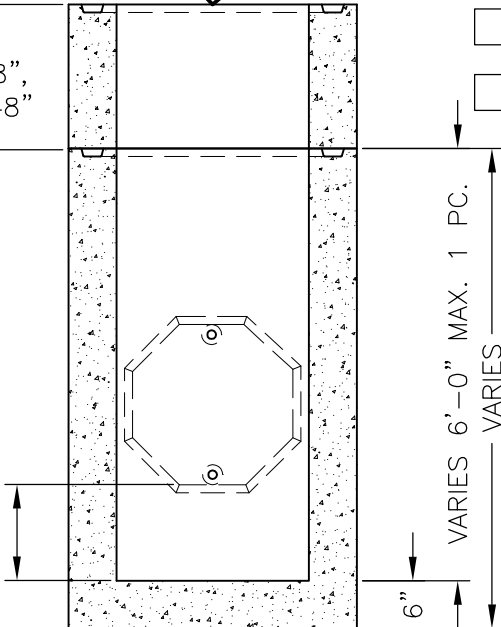
6" CAP WITH FRAME CAST IN FLUSH FOR R4832B GRATE



**BITUMASTIC COATING (IF REQUIRED)**

- INTERIOR
- EXTERIOR
- NONE REQ'D

RISER 6", 12", 18", 24", 36", 48"

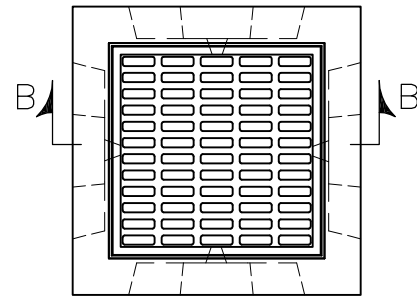


**SECTION A-A**

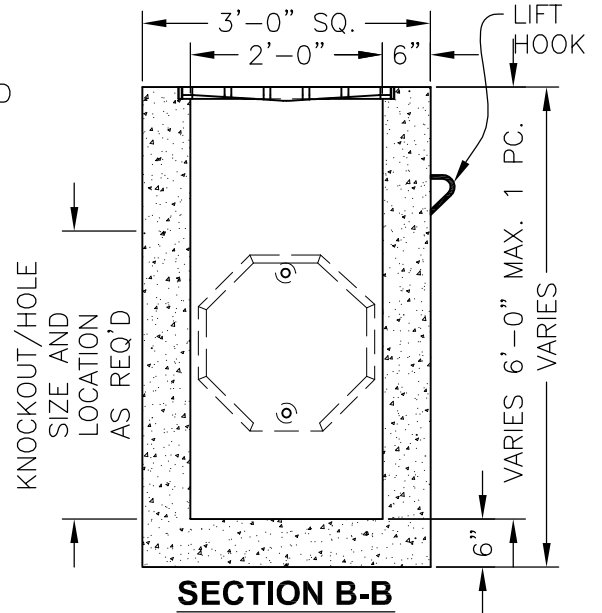
**SUMP REQ'D**

- 0"
- 6"
- 12"
- 18"
- 24"

CODE: 315B-SP FRAME AND GRATE IN CAP OR RAISED STYLE TO BE USED.



**PLAN**



**SECTION B-B**

CODE: 316B-SP WITH NEENAH R4832B GRATE OR EQUAL - HS-20-44 LOADING BICYCLE PROOF CAST IN FLUSH