



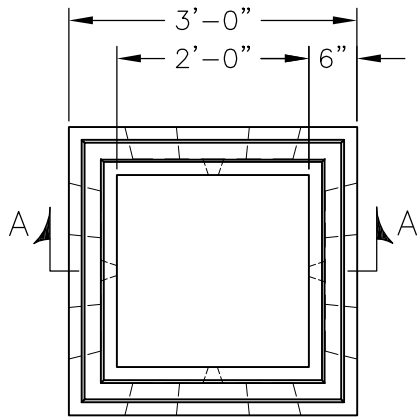
KISTNER CONCRETE PRODUCTS INC.  
8713 READ ROAD  
E. PEMBROKE, N.Y.  
14056  
(716) 894-2267

**PRODUCT DESIGNATION**

**24" SQ. X 36" CATCH BASIN**

**DWG. NO.**

CB-CB2436 ©  
8/22/06



**PLAN**

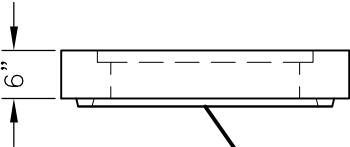
**SPECIFICATIONS:**

CONCRETE: 4,000 PSI @ 28 DAYS  
 ENTRAINED AIR: 5%-9%  
 STEEL: ASTM A496-A615  
 GRADE 60-60 KSI  
 DESIGN LOADING: AASHTO HS-20-44  
 WITH 30% IMPACT AND  
 EQUIVALENT SOIL PRESSURE  
 OF 30 PCF. FLOATION  
 FORCES NOT ACCOUNTED  
 FOR.  
 WEIGHT: 2,191 LBS.  
 KNOCKOUT: ALL KNOCKOUTS HAVE 2" -  
 2 1/2" CONCRETE  
 THICKNESS.

DRAIN HOLE: ALL UNITS HAVE 1" DRAIN  
 HOLES IN EACH KNOCKOUT.  
 CONTRACTOR TO GROUT IF  
 NOT REQUIRED.

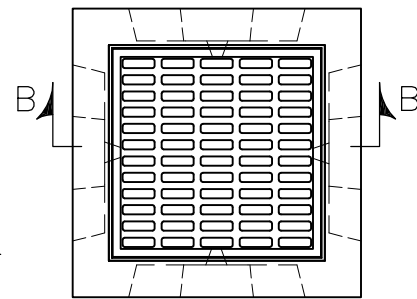
**RAISED FRAME & GRATE**

- CONTRACTOR TO SUPPLY
- 2" HIGH STEEL FRAME FOR R4832B GRATE
- 4" HIGH STEEL FRAME FOR R4832B GRATE
- 6" CAP WITH FRAME CAST IN FLUSH FOR R4832B GRATE

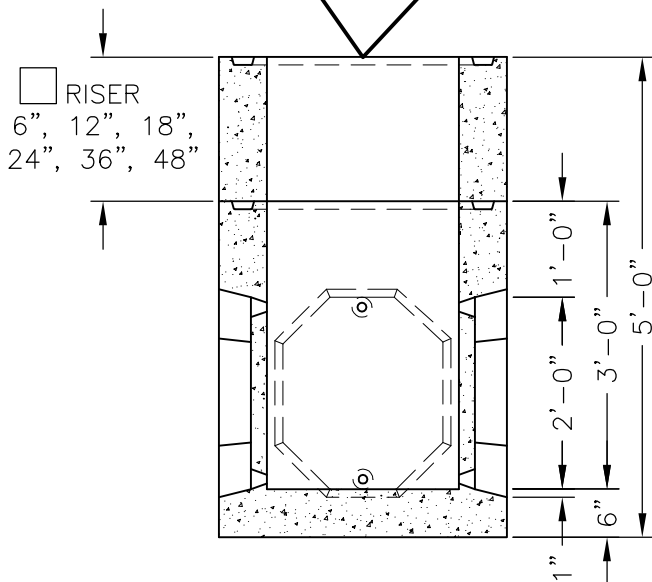


**BITUMASTIC COATING (IF REQUIRED)**

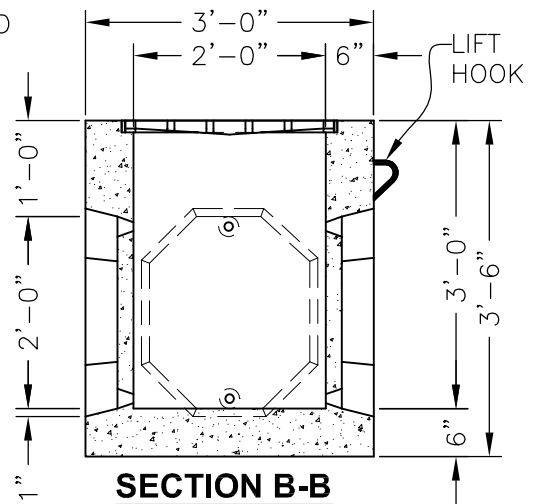
- INTERIOR
- EXTERIOR
- NONE REQ'D



**PLAN**



**SECTION A-A**



**SECTION B-B**

**CODE: 315BS** FRAME AND GRATE IN CAP OR RAISED STYLE TO BE USED.

**CODE: 316BS** WITH NEENAH R4832B GRATE OR EQUAL - HS-20-44 LOADING BICYCLE PROOF CAST IN FLUSH