



KISTNER CONCRETE PRODUCTS INC.
8713 READ ROAD
E. PEMBROKE, N.Y.
14056
(716) 894-2267

PRODUCT DESIGNATION

DWG. NO.

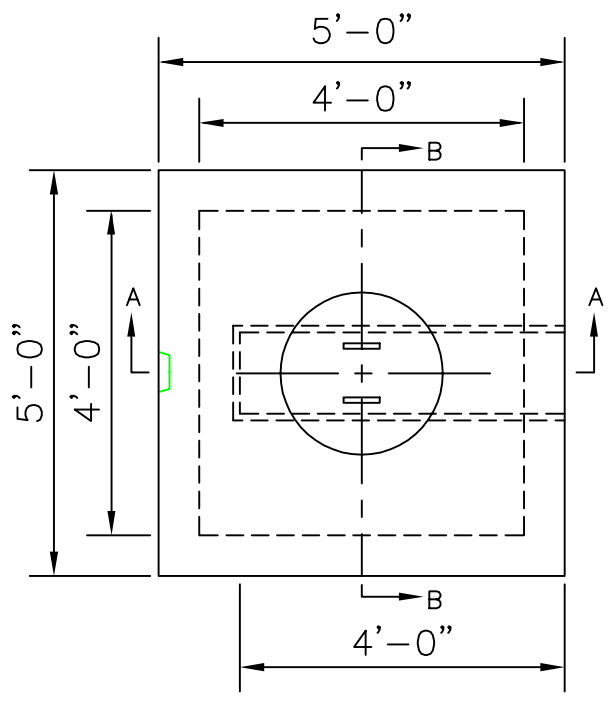
"C" TYPE DOSING CHAMBER

DC-C-TYPE

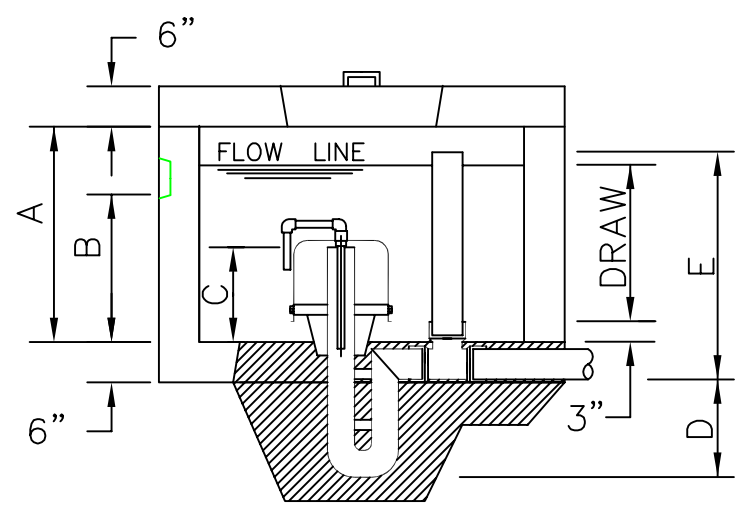
SPECIFICATIONS:
CONCRETE: 4,000 P.S.I. @ 28 DAYS.
ENTRAINED AIR: 5% - 9%.
STEEL: A.S.T.M. A496-A615
GRADE 60-60 KSI.
DESIGN LOADING: A-0.3/300PSF/WALKWAYS.
INLET: 4" TYPICAL INLET

SPECIFICATIONS:
CONCRETE: 4000 P.S.I. @ 28 DAYS.
ENTRAINED AIR: 5% - 9%.
STEEL: A.S.T.M. A496-A615
GRADE 60-60 KSI.
DESIGN LOADING: A.A.S.H.T.O. HS-20-44
WITH 30% IMPACT AND
EQUIVALENT SOIL PRESSURE
OF 130 (PSI).

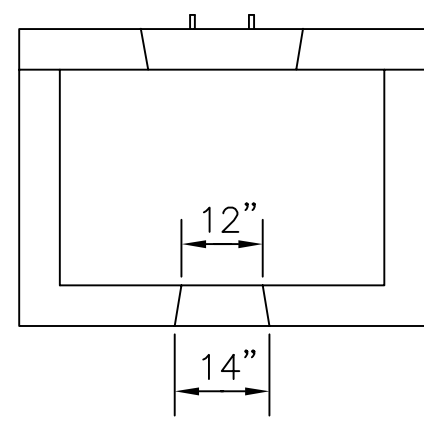
SIPHON	GAL	DRAW	A	B	C	D	E
413	130	13"	28"	18"	9"	12"	23.5"
417	170	17"	32"	22"	11"	15"	27.5"



PLAN



SECTION A-A



SECTION B-B