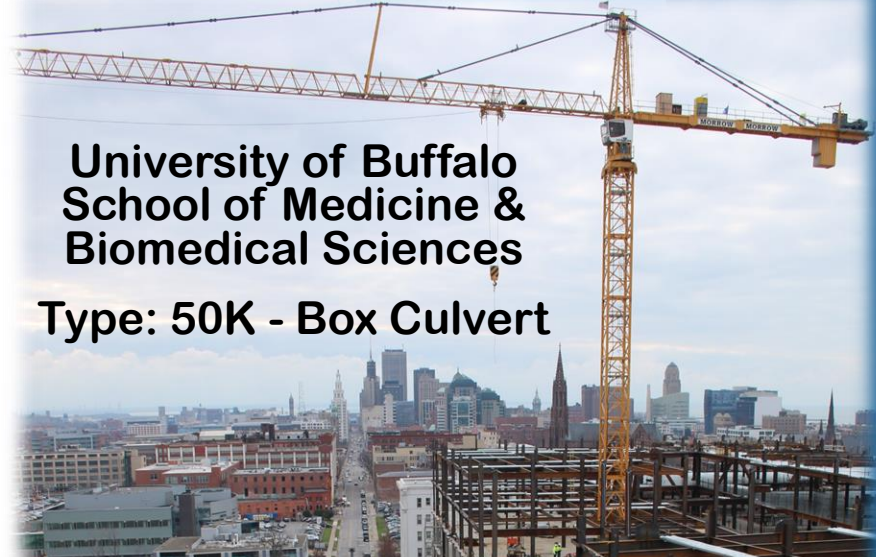


KISTNER CONCRETE PRODUCTS INC. - STORMWATER DETENSION PROJECT MATRIX

**BNIA
500 K DETENSION SYS.
Type: Box Culvert**



*Detention and infiltration Application
Type: Tunnel Style*



**University of Buffalo
School of Medicine &
Biomedical Sciences
Type: 50K - Box Culvert**



Project 2015 - 250 Delaware

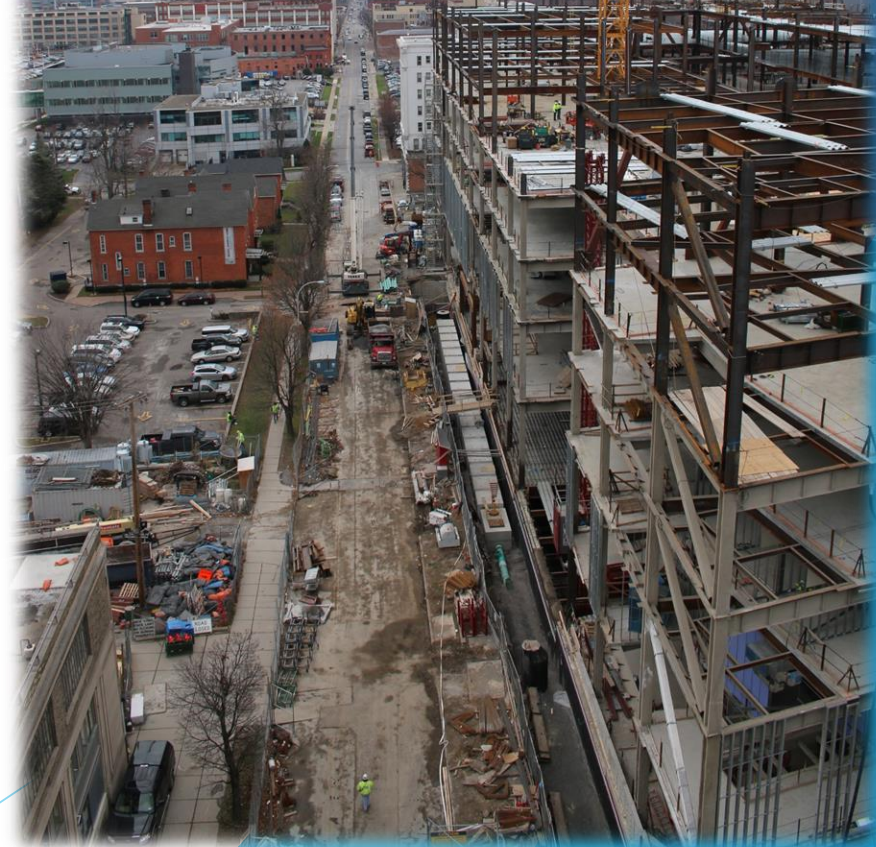
Location: Chippewa & Delaware, City of Buffalo, NY
 Owner: UNILAND DEVELOPMENT
 Engineer: Tredo Engineers
 Manufacturer: Kistner Concrete Products Inc., Lockport, NY
 Installation Contractor: Holler Excavating & Grading Inc.
 Project Highlights - Special Features - Precast Specifics:
 Precast concrete Storm water Detention System.
 51 Sections of 12 Ton Sec. - Precast Box Culvert 10' x 4'
 Designed to HS-20 Design Loading. Installed inside Bldg., under 1st floor after construction of superstructure.



**Box Culvert
Style System**



**Retain-It
Type: Vault Style**



**TAKE A
NEW LOOK AT
PRECAST**

**KISTNER
CONCRETE
PRODUCTS
INC.**

NPCCA
Precast... The Concrete Solution