

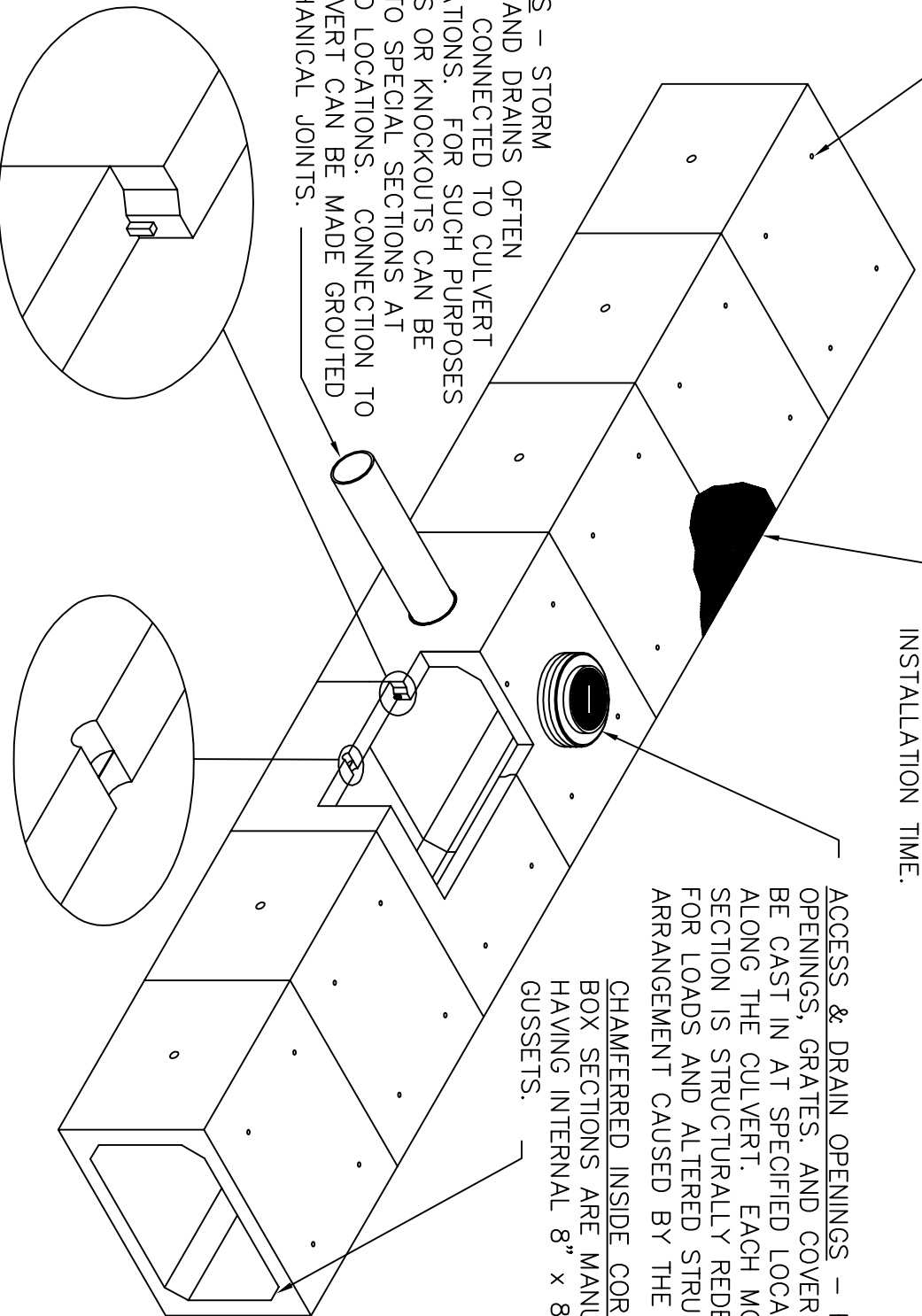
LIFTING PINS – EACH SECTION IS SUPPLIED WITH FOUR O.S.H.A. APPROVED LIFTING PINS.

COATINGS – WHEN DEEMED NECESSARY EITHER INTERIOR OR EXTERIOR COATINGS CAN BE APPLIED UNDER CONTROLLED CONDITIONS. ALL SURFACES INCLUDING BOTTOM ARE FACTORY SPRAYED REDUCING ON SITE COST AND INSTALLATION TIME.

ACCESS & DRAIN OPENINGS – ROOF OPENINGS, GRATES, AND COVERS CAN BE CAST IN AT SPECIFIED LOCATIONS ALONG THE CULVERT. EACH MODIFIED SECTION IS STRUCTURALLY REDESIGNED FOR LOADS AND ALTERED STRUCTURAL ARRANGEMENT CAUSED BY THE MODIFICATION.

CHAMFERRED INSIDE CORNERS – ALL BOX SECTIONS ARE MANUFACTURED HAVING INTERNAL 8" x 8" OR 12" x 12" GUSSETS.

LATERALS – STORM SEWERS AND DRAINS OFTEN MUST BE CONNECTED TO CULVERT INSTALLATIONS. FOR SUCH PURPOSES OPENINGS OR KNOCKOUTS CAN BE CAST INTO SPECIAL SECTIONS AT SPECIFIED LOCATIONS. CONNECTION TO THE CULVERT CAN BE MADE GROUTED OR MECHANICAL JOINTS.



JOINT AND GASKET – EACH STRUCTURE IS FORMED WITH A MALE AND FEMALE SHIPLAP JOINT. A 1" SQ. NEOPRENE GASKET IS CEMENTED TO THE MALE JOINT SURFACE OF EACH SECTION DURING THE MANUFACTURING PROCESS.

WEEP HOLES – EACH SECTION IS SUPPLIED WITH TWO 4" DIA. PVC WEEP HOLES. THE PLASTIC DIAPHRAGM CAN BE BROKEN OUT AND THE STRUCTURE BACKFILLED WITH A PERVIOUS MATERIAL WHEN RELIEF OF EXTERNAL HEAD IS REQUIRED.

KISTNER CONCRETE PRODUCTS INC.
8713 READ ROAD
F. PEMBROKE, N.Y.
14056
(716) 894-2267



PRODUCT DESIGNATION
BOX CULVERT – LAYOUT DETAIL

DWG. NO.
BC-1