



KISTNER CONCRETE PRODUCTS INC.
 8713 READ ROAD
 E. PEMBROKE, N.Y. 14056
 (716) 894-2267

PRODUCT DESIGNATION

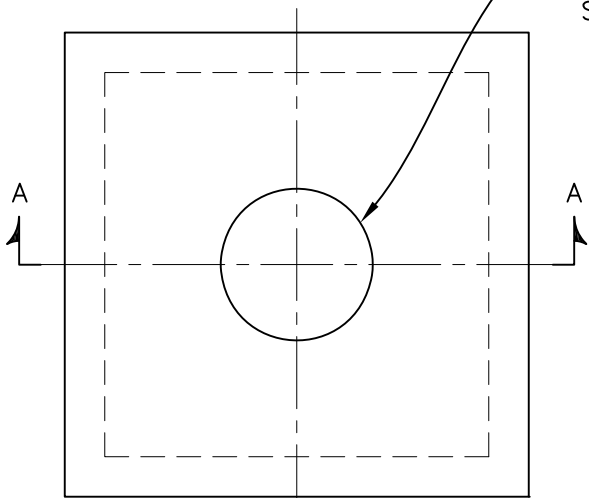
8'-0" X 8'-0" STANDARD SQUARE STRUCTURE

DWG. NO.

SRS-SRS8SQ ©

9/6/12

SIZE AND LOCATION AS REQUIRED



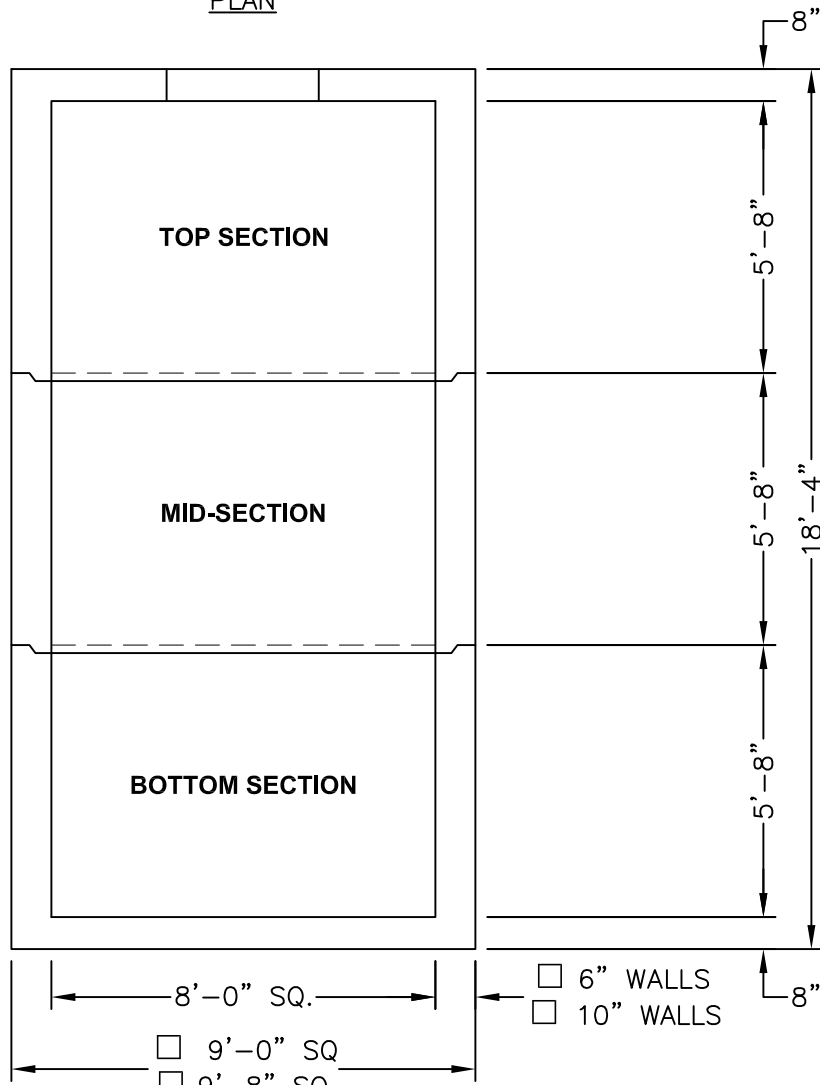
PLAN

SPECIFICATIONS:

CONCRETE: 4,000 P.S.I. @ 28 DAYS
 ENTRAINED AIR: 5% - 9%
 STEEL: A.S.T.M. A496-A615
 GRADE 60-60 KSI.
 DESIGN LOADING: A.A.S.H.T.O. HS-20-44
 WITH 30% IMPACT AND EQUIVALENT SOIL PRESSURE OF 130 (PSF). FLOTATION FORCES NOT ACCOUNTED FOR.

WEIGHT:

TOP SECTION: 35,382 LBS.
 MID-SECTION: 24,719 LBS.
 BOTTOM SECTION: 36,255 LBS.
 TOTAL: 96,356 LBS.



SECTION A-A