

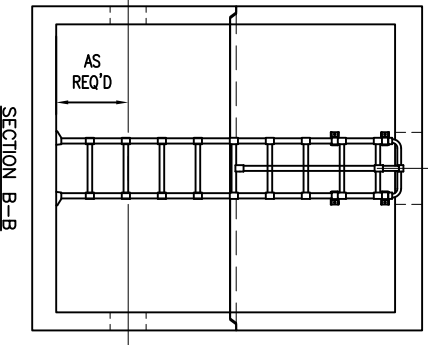
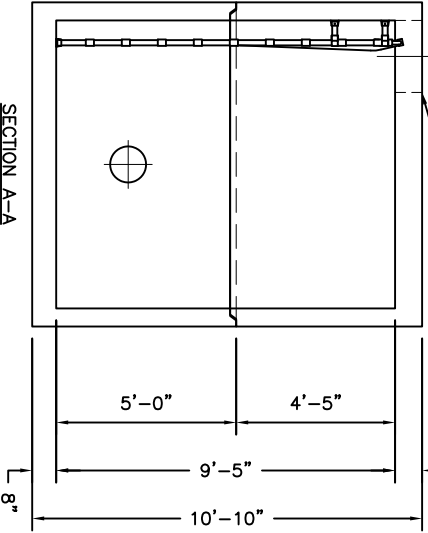
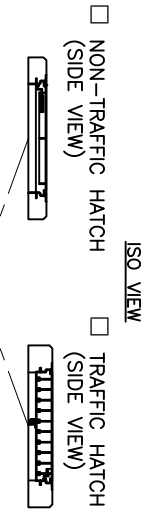
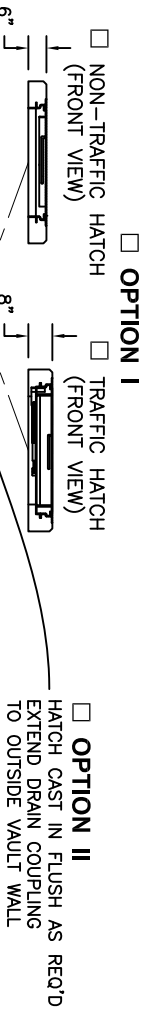
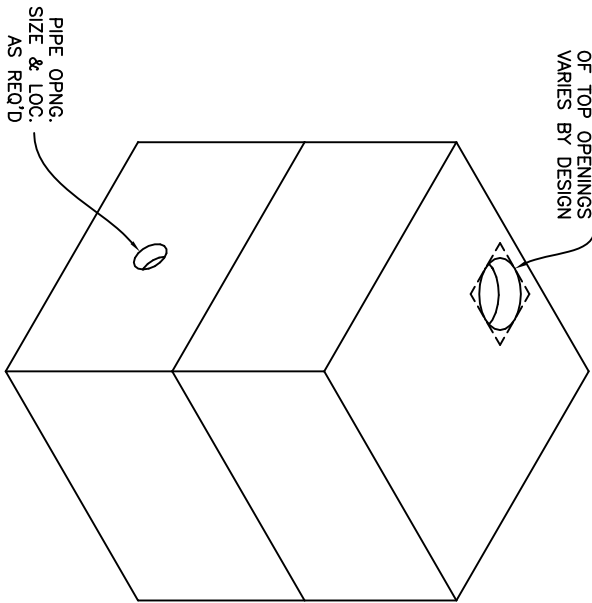
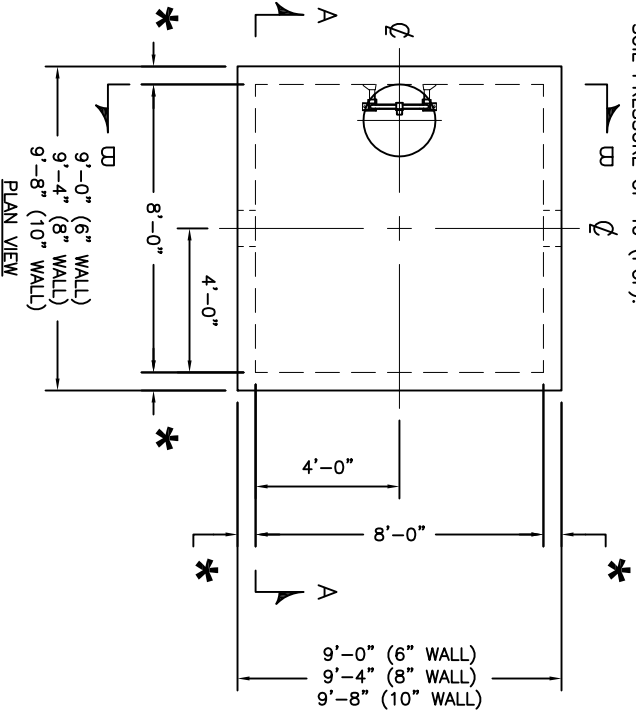
SP-7A
 SPECIFICATIONS:
 CONCRETE: 5,000 P.S.I. @ 28 DAYS.
 ENTRAINED AIR: 5% - 8%.
 STEEL: A.S.T.M. A496-A615
 GRADE 60-80 KSI.
 EPOXY COATED (IF REQ'D).
 ACI 318-99 TRAFFIC. USE ACI LOAD FACTORS.
 A.A.S.H.T.O. METHOD OF DESIGN. EQUIVALENT
 SOIL PRESSURE OF 40 (PCF).

LIVE LOAD:
 EARTH FILL:
 WATER TABLE:
 H2O.
 0 TO 3'
 3' BELOW GRADE.

- HOLES - CONTRACTOR TO GROUT
- WATERTIGHT BOOT SEAL
- LINK SEAL WITH STEEL SLEEVE
- LADDER ONLY
- LADDER WITH INTEGRAL LADDER UP POST
- LADDER WITH SEPARATE LADDER UP POST

NOTE:
 TRAFFIC LOADED ALUMINUM HATCHES ARE NOT DESIGNED
 FOR PLACEMENT IN DELIBERATE TRAFFIC AREAS. IF REQUIRED -
 UPGRADE TO GALVANIZED STEEL.

NOTE:
 SIZE, QTY & LOC.
 OF TOP OPENINGS
 VARIES BY DESIGN



* NOTE: 6", 8" & 10" WALLS AVAILABLE.



KISTNER CONCRETE PRODUCTS INC.
 8713 READ ROAD
 F. PEMBROKE, N.Y.
 14056
 (716) 894-2267

8'-0" X 8'-0" VAULT

PRODUCT DESIGNATION

8X8VAULTCAT ©

DWG. NO.

3/10/16